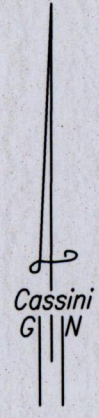
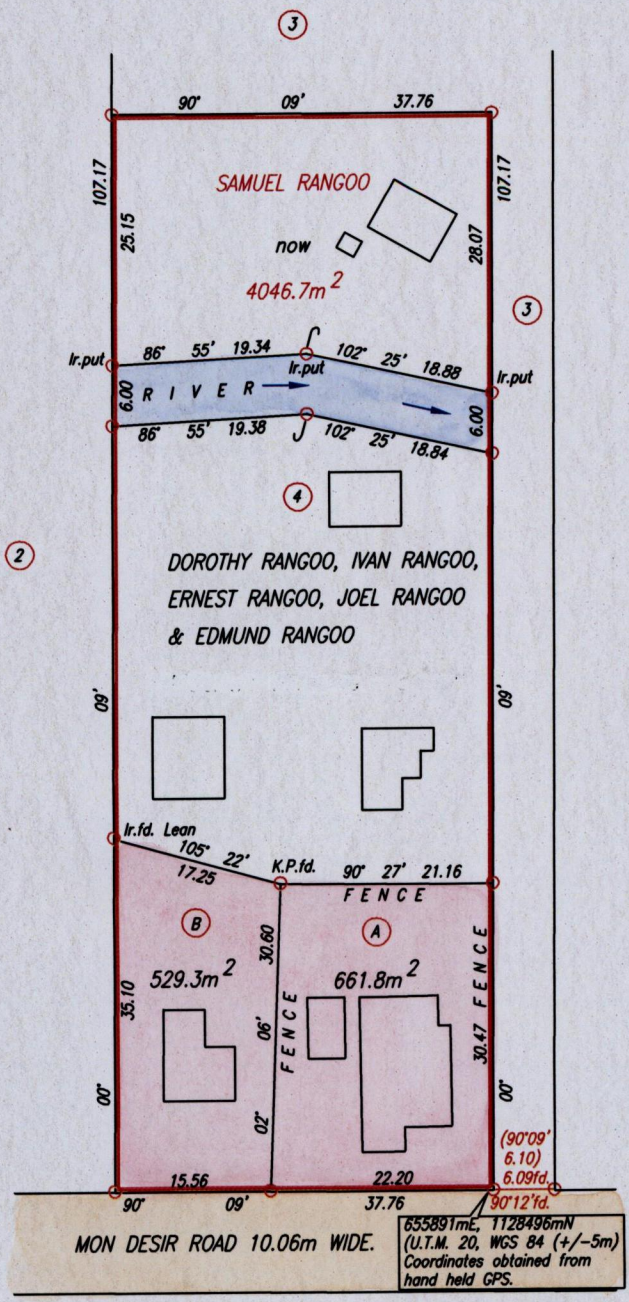


R.P.O. Vol. 10 Fol. 393
C.T. Vol. 2965 Fol. 15

Cadastral Sheet G.6.N. 62C
Ward of La Brea 4/d
County of St. Patrick
Mon Desi Road,
Rousillac

Bk.1148 fol. 152



Approved *[Signature]*
Director of Surveys 2010.12.30

SCALE 1:750
Distances are in Metres

○ Denotes found except otherwise stated.
Bearings are Cassini Grid based on Solar Observations.
PLAN of 2 Parcels of land coloured pink in the Ward of La Brea
Containing together one thousand, one hundred and ninety one point one square metres.
Surveyed by me, with due authority, in September, 2009
In accordance with Regulation 25(1) of the Land Surveyors' Regulations 1998,
I certify that this plan is correct.

Checked by *[Signature]* Winston Ramcharan

Entered Trinidad & Tobago Land Surveyor 6th October 2010