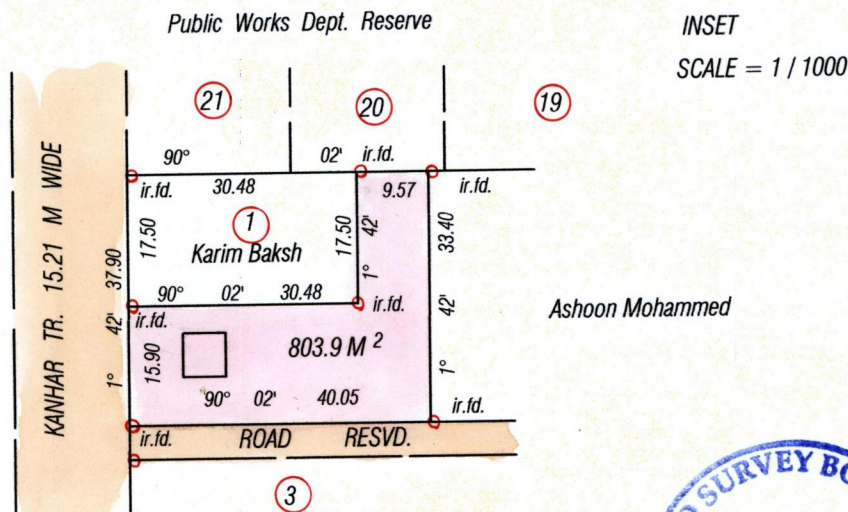
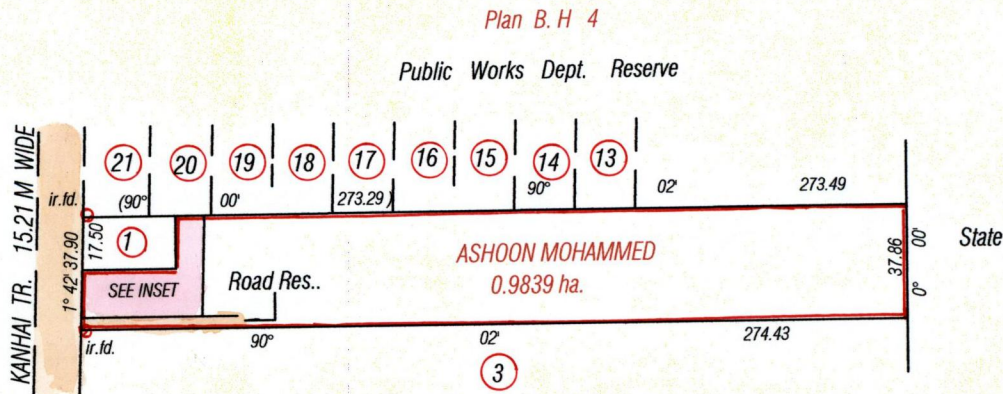


R.P.O Vol. 692 Fol. 93  
C.T Vol. 2185 Fol. 423  
CT. Vol. 5534 Fol. 207  
Bk. 1003 Fol. 105  
Bk. 1249 Fol. 232

DUPLICATE PLANS



Approved   
Director of Surveys 2010.12.20



Bearings are Cassini Grid based on Solar Obs.

○ Denotes iron put except otherwise stated  
add

SCALE 1 / 2500  
Distances are in metres

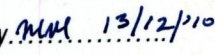
Note: To obtain compass bearing subtract minutes

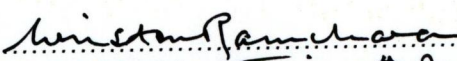
PLAN of a Parcel of land coloured pink in the Ward of Moruga

Containing eight hundred and three point nine square metres

Surveyed by me, with due authority, in November 2010

In accordance with Regulation 25 (1) of the Land Surveyors' Regulations 1998, I certify that this plan is correct

Checked by  13/12/10  
Entered on.....

  
Trinidad & Tobago Land Surveyor... 7<sup>th</sup> December 2010



CT. VOLUME 5534 FOLIO 207 - LINDA & KRISHNA PUTKOO



1336:210