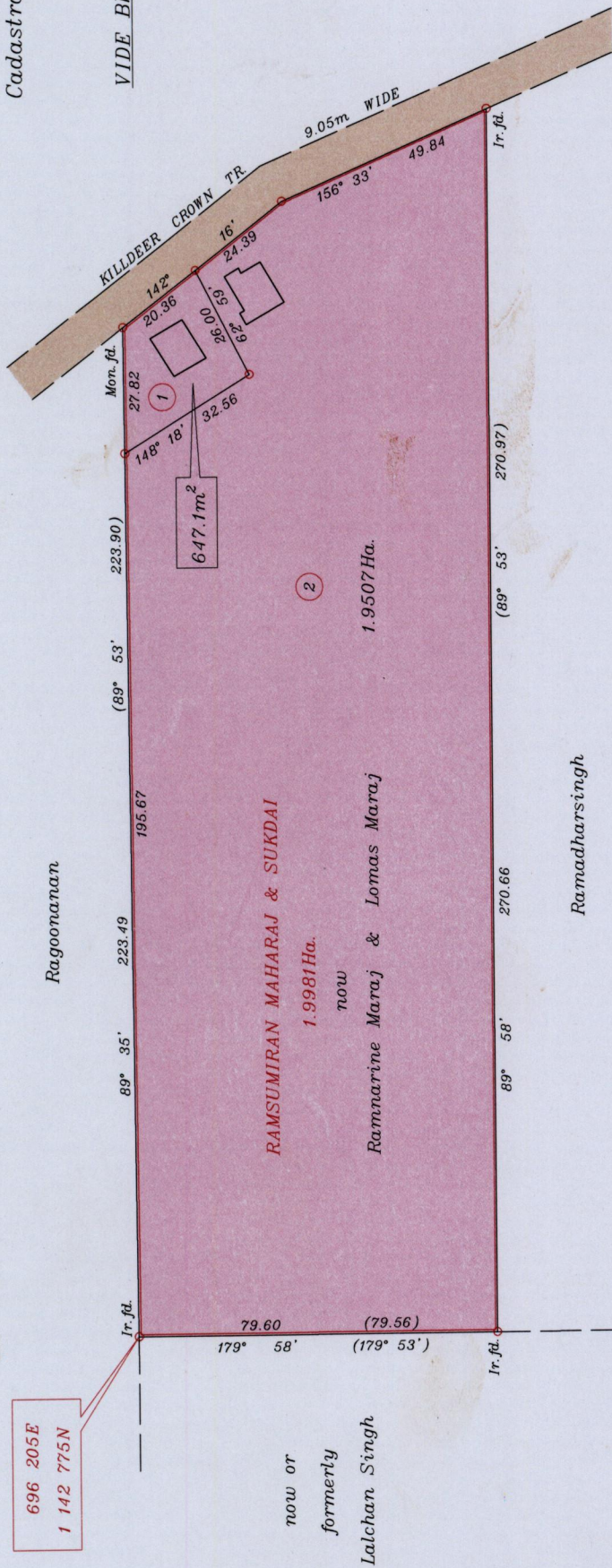


Ward of Charuma
County of Nariva
Cadastral Sheet E.21.I., 55A
2/6

VIDE Bk. 629 fol. 333



Cassini
G N



SCALE 1:1500

o denotes Ir. put unless otherwise stated

Distances are in metres

Bearings are Cassini Grid based on Solar Observations

PLAN of 2 Parcels of land coloured pink in the Ward of Charuma

Containing together two point zero one five four hectares

Surveyed by me, with due authority, in April 2009

In accordance with Regulation 25(1) of the Land Surveyors Regulations 1998,

I certify that this plan is correct.

Approved
Director of Surveys 2010.12.10

Co-ordinates are U.T.M. Zone 20 Naparima Datum +/- 5m
obtained from handheld G.P.S.

Checked by M.M. 3/12/10

Entered

Elizabeth Ann Hamilton

Trinidad & Tobago Land Surveyor
November 09, 2010