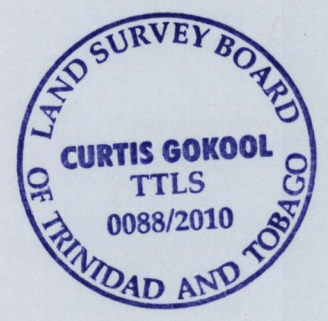
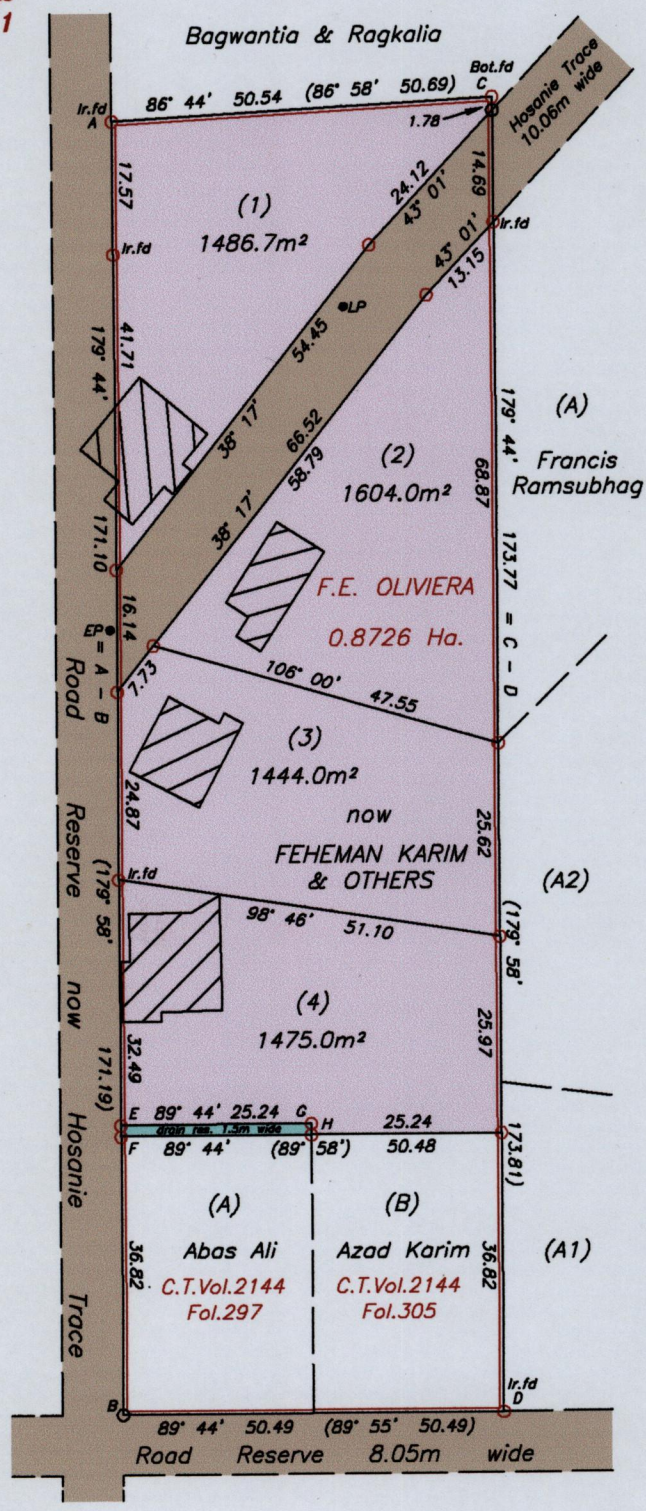


R.P.O. Vol. Fol.
C.T. Vol. 519 Fol. 607

Ward of Pointe-a-Pierre
County of Victoria
Cadastral Sheet $\frac{54B}{1/a}$ (D.24.E)

Ref: Bk.720 Fol.142
Bk.1005 Fol.162
Bk.1262 Fol.101



Approved: *[Signature]*
Director of Surveys 2010.12.10

A = N 1143500 (U.T.M)
E = E 681305 (U.T.M)
E - F 179° 44' 1.50
G - H 179° 44' 1.50
F - H 89° 44' 25.24

Notes: U.T.M 20 Naparima (GPS +/- 3.0m)
○ Denotes no mark put
● Denotes Iron put unless otherwise stated
Bearings are Cassini Grid based on solar observations

SCALE 1:1000
Distances are in METRES

PLAN of 4 Parcels of land coloured pink in the Ward of Pointe-a-Pierre.
Containing together zero point six zero one zero hectares.
Surveyed by me, with due authority, in September 2008 at the request of Wazim Karim.
In accordance with Regulation 25 (1) of the Land Surveyors' Regulations 1998,
I certify that this plan is correct.

Checked by: *[Signature]* 8/12/10

[Signature]

Entered on..... Trinidad and Tobago Land Surveyor..... November 09.....2010