

R.P.O. Vol. 25 Fol. 423
 C.T. Vol. 3841 Fol. 243



At Station (A)
 E 0671173
 N 1127835
 Reading taken with
 Handheld G.P.S.
 U.T.M. Zone 20
 Naparima
 ± 5 m.

Approved *[Signature]*
 Director of Surveys 2010.12.2

Vide Bk. 722 fol. 352

SCALE : 1:1500

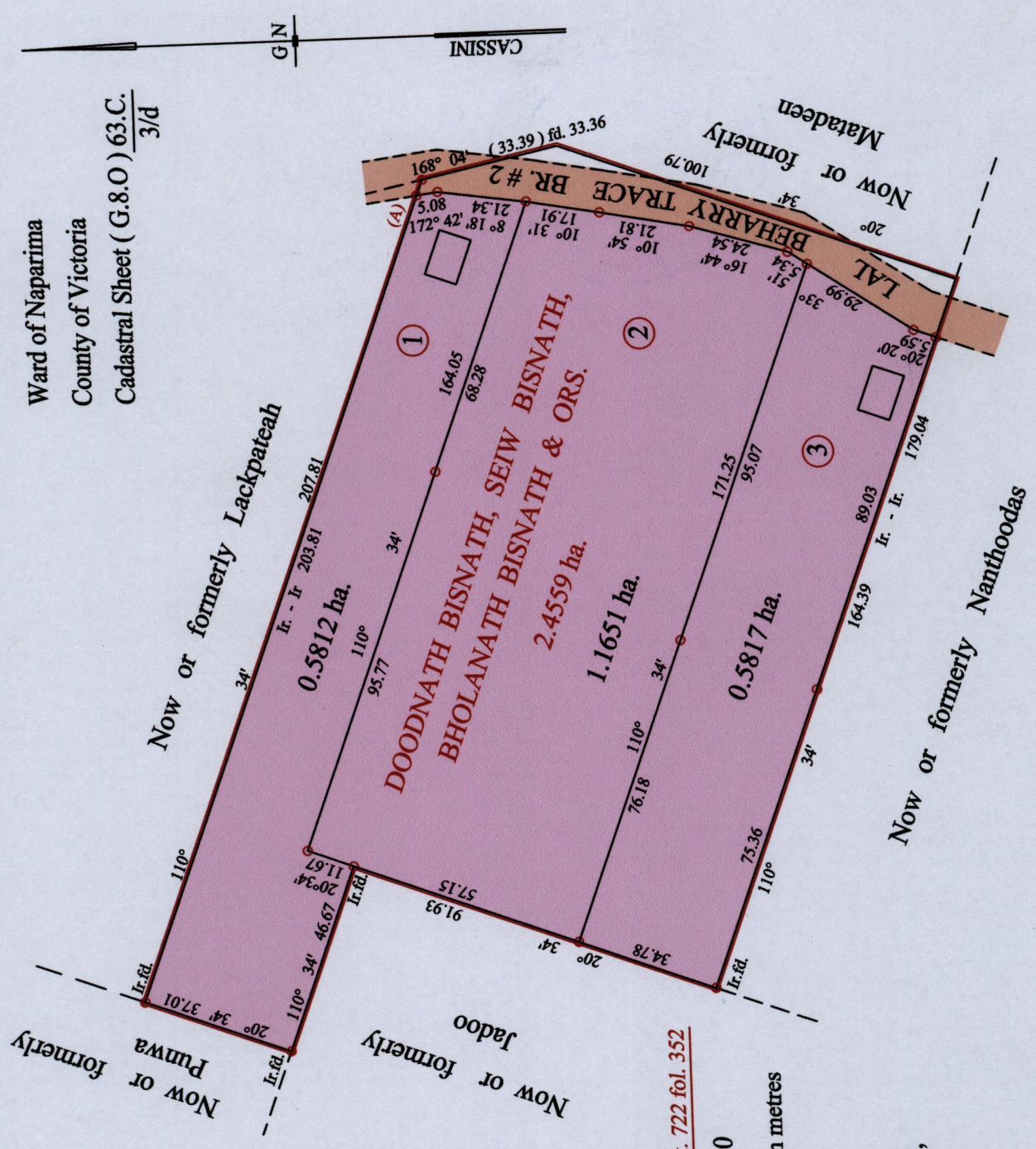
Distances are in metres

Note: Bearings are cassini grid based on solar observations
 PLAN of 3 Parcels of land coloured pink in the Ward of Naparima
 Containing together two point three two eight zero hectares
 Surveyed by me, with due authority, in March 2000
 In accordance with Regulation 25 (1) of the Land Surveyors' Regulations 1998,
 I certify that this plan is correct.

Checked by *[Signature]*
 2010.11.11

Entered on Trinidad & Tobago Land Surveyor 2010.11.11

Ward of Naparima
 County of Victoria
 Cadastral Sheet (G.8.O) 63.C.
 3/d



1336 1336/196

961