

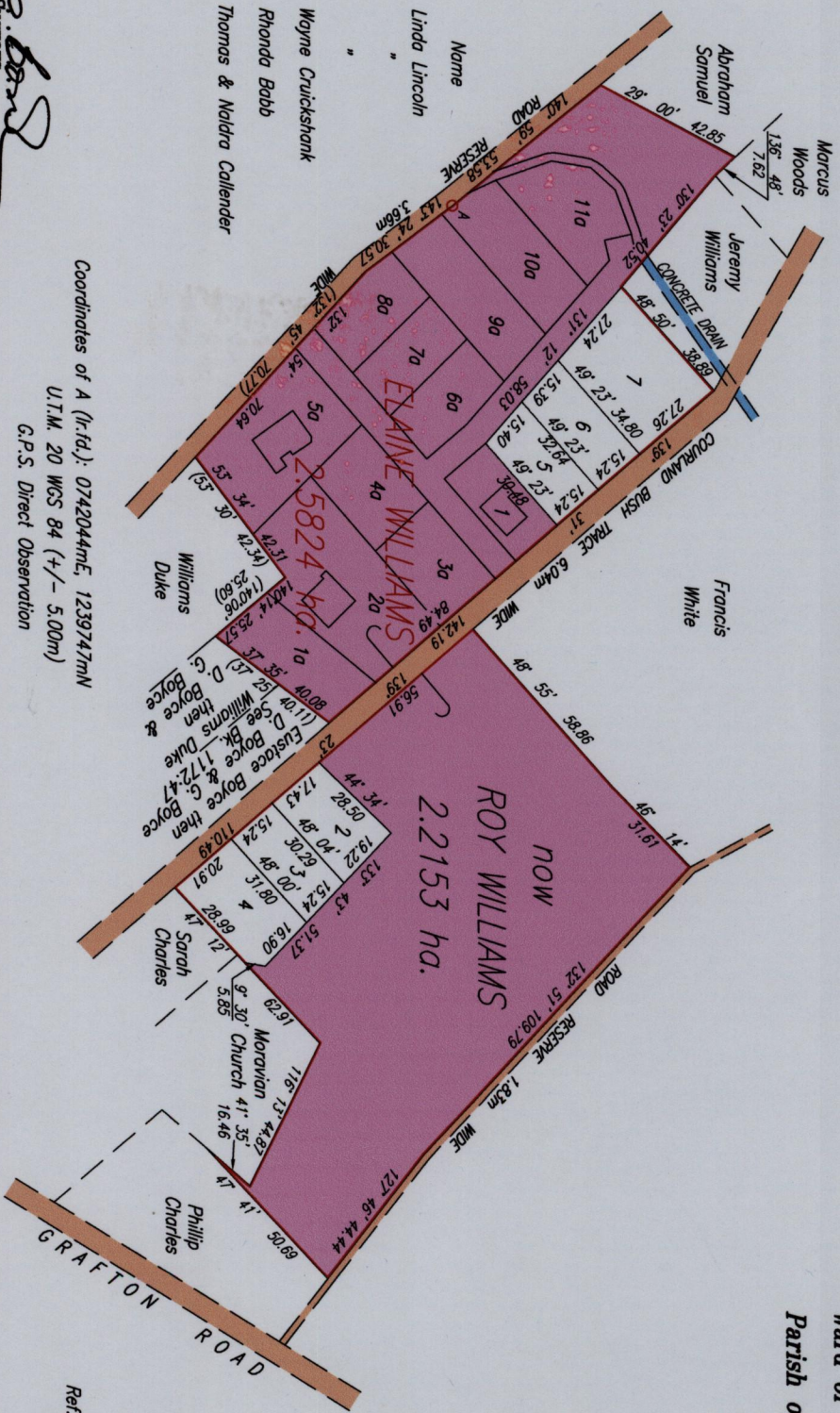
Remaining Portion Plan

Cadastral Sheet 116 1C  
3/d/1  
Ward of Tobago  
Parish of St. Patrick

Lot#	C.T. Vol. Fol.	Area	Name
2	3362 183	537.6 m <sup>2</sup>	Linda Lincoln
3	3362 185	472.5 m <sup>2</sup>	"
4	3362 187	669.7 m <sup>2</sup>	"
5	4047 287	481.4 m <sup>2</sup>	Woyne Cuiickshank
6	3930 43	515.3 m <sup>2</sup>	Rhonda Babb
7	3976 469	994.4 m <sup>2</sup>	Thomas & Naldra Callender

Approved *[Signature]*  
Director of Surveys 2010.11.12

Coordinates of A (r.f.d.): 0742044mE, 1239747mN  
U.T.M. 20 WCS 84 (+/- 5.00m)  
G.P.S. Direct Observation



Distances are in METRES  
SCALE 1:2000



This is a true copy of a diagram of two point five eight two four hectares originally transferred to Elaine Williams, showing a portion coloured pink and containing two point two one five three hectares being the remainder after six previous transfers of another portion of the land. In accordance with Regulation 25 (1) of The Land Surveyors Regulations 1998,

I certify that this plan is correct.

Checked by *[Signature]* 9/11/10

Entered on .....

*[Signature]*  
TTLS

Trinidad & Tobago Land Surveyor  
C:\LESS 2010\TOBAGO\ROY WILLIAMS REMAINING PORTION.dwg  
2010  
FILE NO: TMO22

Ref: See Bk. 1189 Fol. 128  
Bk. 1238 Fol. 25