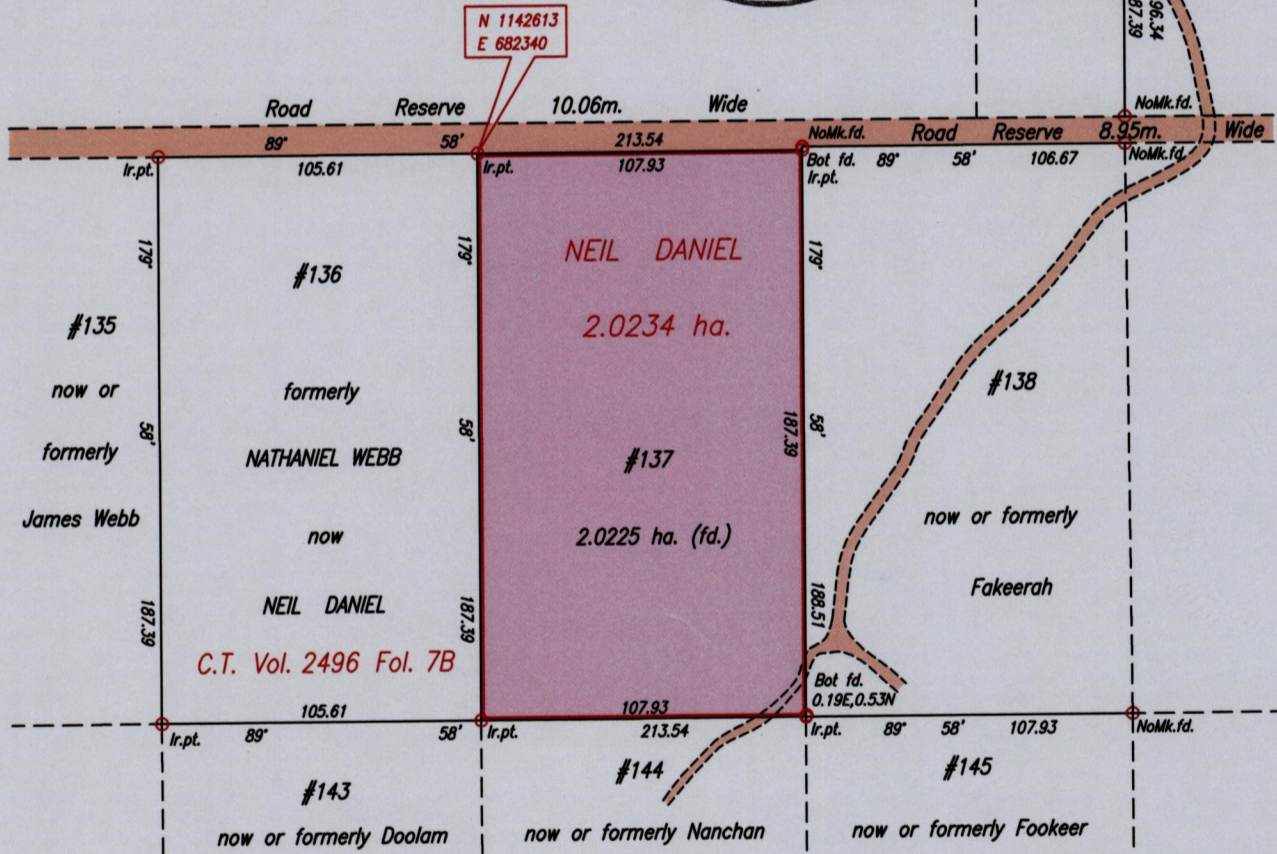
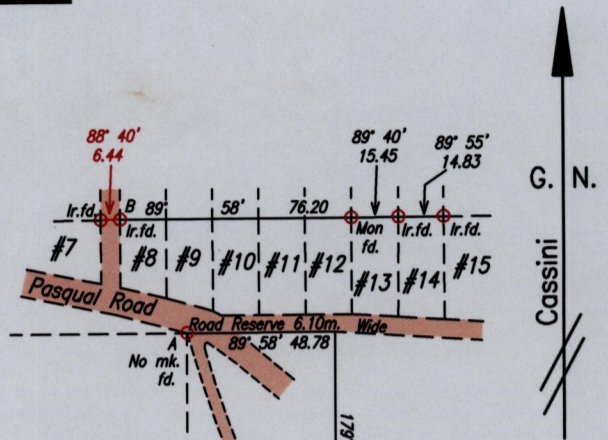


REDEFINITION PLAN

References :

- Bk.258 Fol.102
- Bk.254 Fol.67
- Plan L.B. 39
- Bk.1151 Fol.28
- Plan E.B.43

Coordinates obtained by Hand Held GPS.
U.T.M. 20, NAPARIMA (+/-5.0m.)



N 1142613
E 682340

A - B 329° 57' 43.67

Approved *[Signature]*
& Director of Surveys 2010.11.12

SCALE 1:2500
Distances are in metres

Bearings are based on solar Observations
PLAN of a Parcel of land coloured pink in the Ward of Savana Grande
Containing two point zero two two five hectares
Redefined by me, with due authority, in February, March and April 2010 for Irtha and Jessica Daniel
In accordance with Regulation 25 (1) of The Land Surveyors Regulations 1998,
I certify that this plan is correct.

Checked by *[Signature]* 8/11/10

[Signature]

Entered on

Trinidad & Tobago Land Surveyor. 20th April 2010.