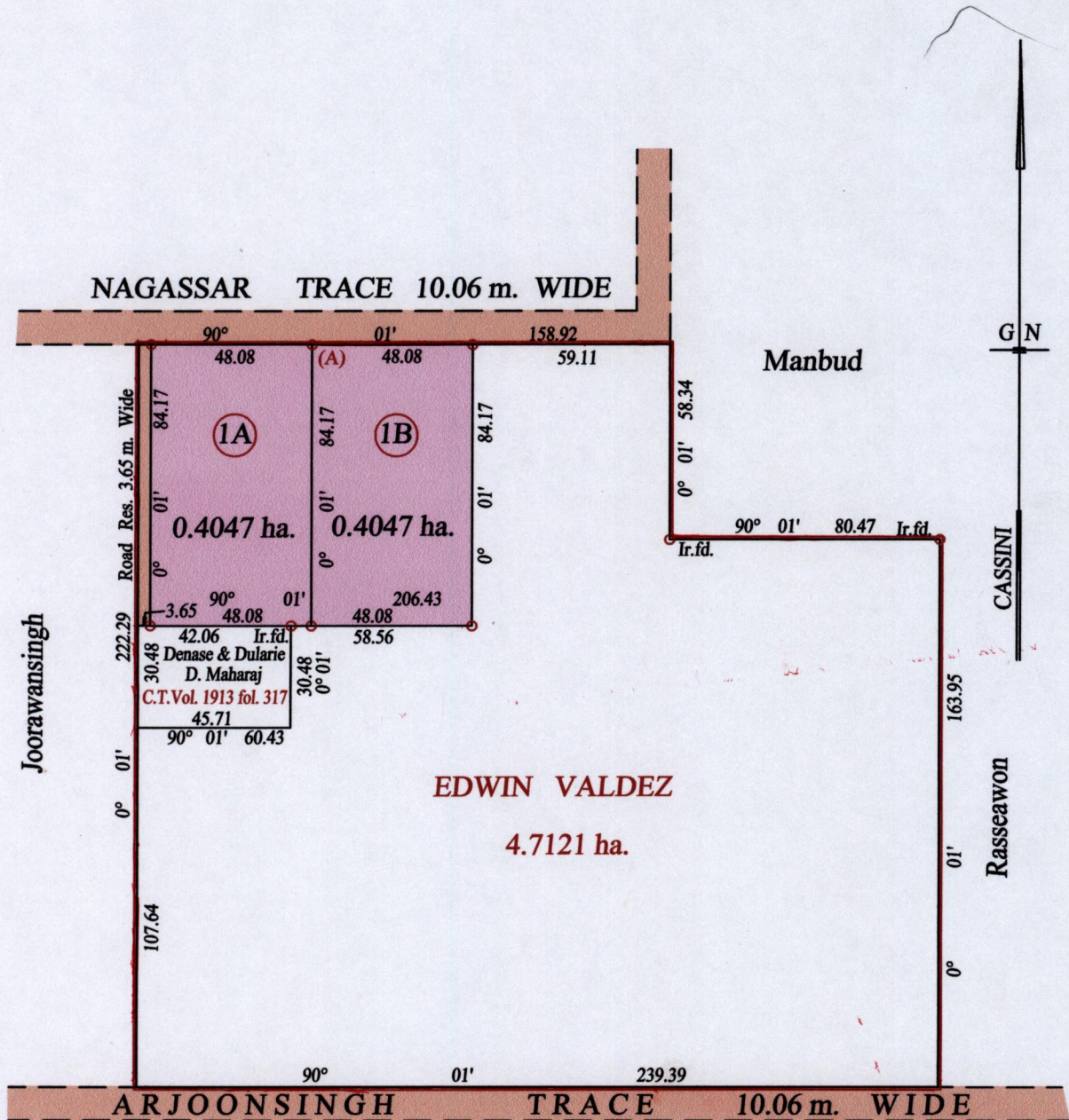


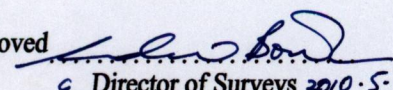
R.P.O. Vol. 178 Fol. 495
C.T. Vol. 3760 Fol. 329

Ward of Siparia
County of St. Patrick
Cadastral Sheet (G.18.G) 73.C.
2/c



At station (A)
E 0671685
N 1119730
Reading taken with
Handheld G.P.S.
Garmin 76S
U.T.M. Zone 20
Naparima

Vide Bk. 1014 fol. 22
Vide Bk. 1014 fol. 23

Approved 
Director of Surveys 2010.5.24

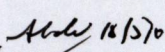
Denotes Iron put except stated otherwise.

SCALE : 1:2000

Note: Bearings are cassini grid based on solar observations Distances are in metres

PLAN of 2 Parcels of land coloured pink in the Ward of Siparia
Containing together zero point eight zero nine four hectares
Surveyed by me, with due authority, in June 2009

In accordance with Regulation 25 (1) of the Land Surveyors' Regulations 1998,
I certify that this plan is correct.

Checked by 

Entered on Trinidad & Tobago Land Surveyor 17.03. 2010

