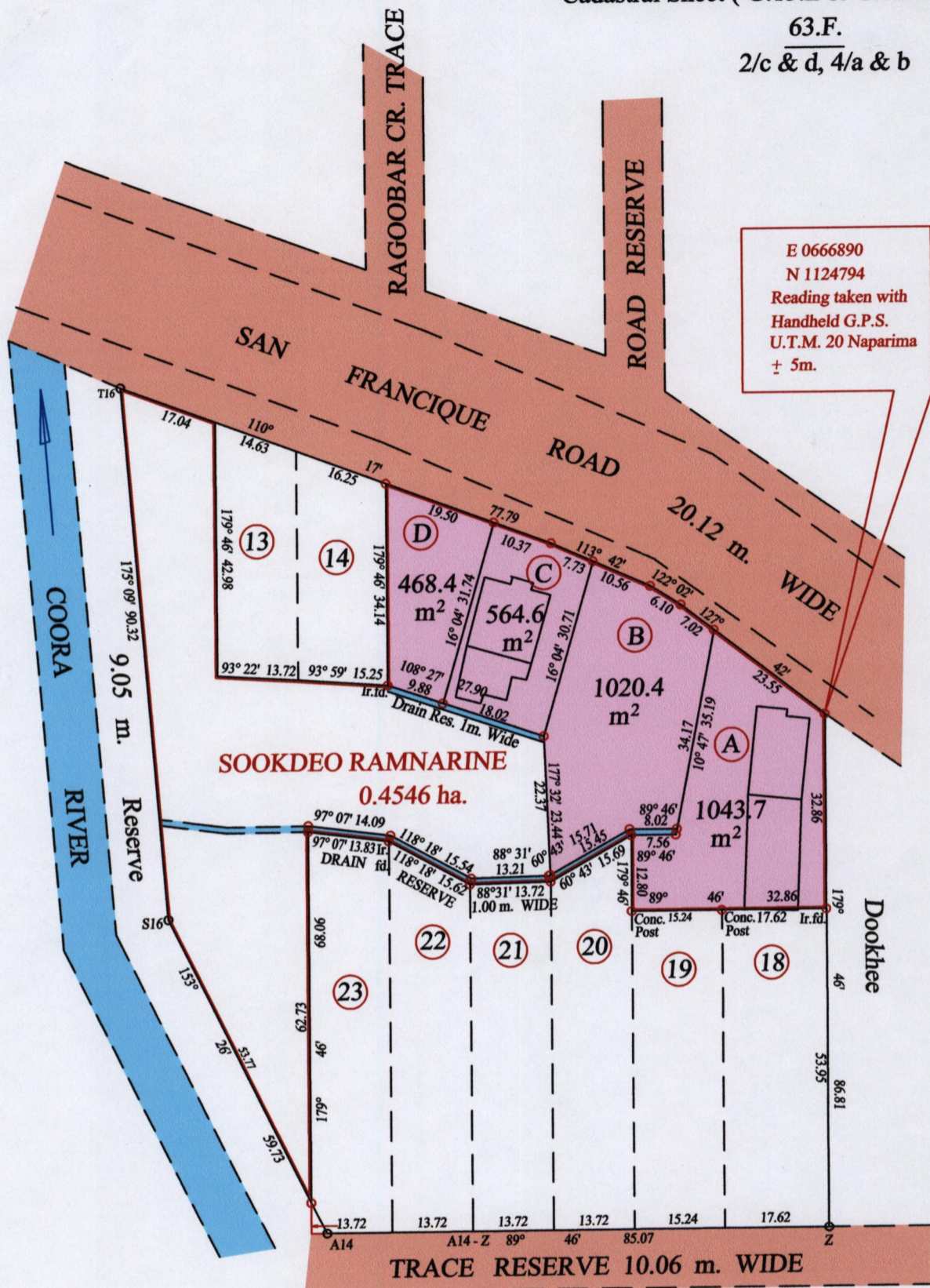


R.P.O. Vol. Fol.  
C.T. Vol. 5193 Fol. 301

Ward of Siparia  
County of St. Patrick  
Cadastral Sheet ( G.13.E & G.12.L. )

63.F.  
2/c & d, 4/a & b



E 0666890  
N 1124794  
Reading taken with  
Handheld G.P.S.  
U.T.M. 20 Naparima  
± 5m.

G N  
U.T.M.

Approved *[Signature]*  
Director of Surveys 2010.11.9

Vide Bk. 1137 fol. 197  
Vide Plan MJ 63  
Vide S.O.No. 32/62

o Denotes Iron put except stated otherwise.

SCALE : 1:1000

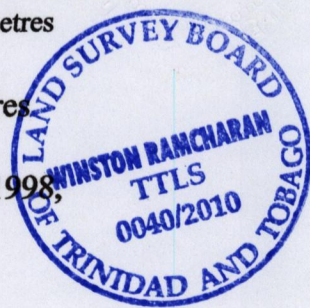
Note: Bearings are U.T.M. grid based on solar observations Distances are in metres

PLAN of 4 Parcels of land coloured pink in the Ward of Siparia  
Containing together three thousand and ninety seven point one square metres

Surveyed by me, with due authority, in August 2010

In accordance with Regulation 25 (1) of the Land Surveyor's Regulations 1998,

I certify that this plan is correct.



Checked by *[Signature]* *[Signature]*

Entered on ..... Trinidad & Tobago Land Surveyor 25<sup>th</sup> October 2010