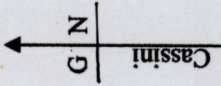


RPO . Vol 28 Fol. 465  
 CT. Vol. 2474 Fol. 213

VOL. 5305 Fol. 159

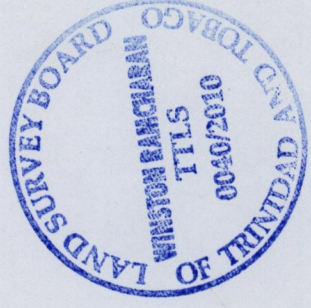
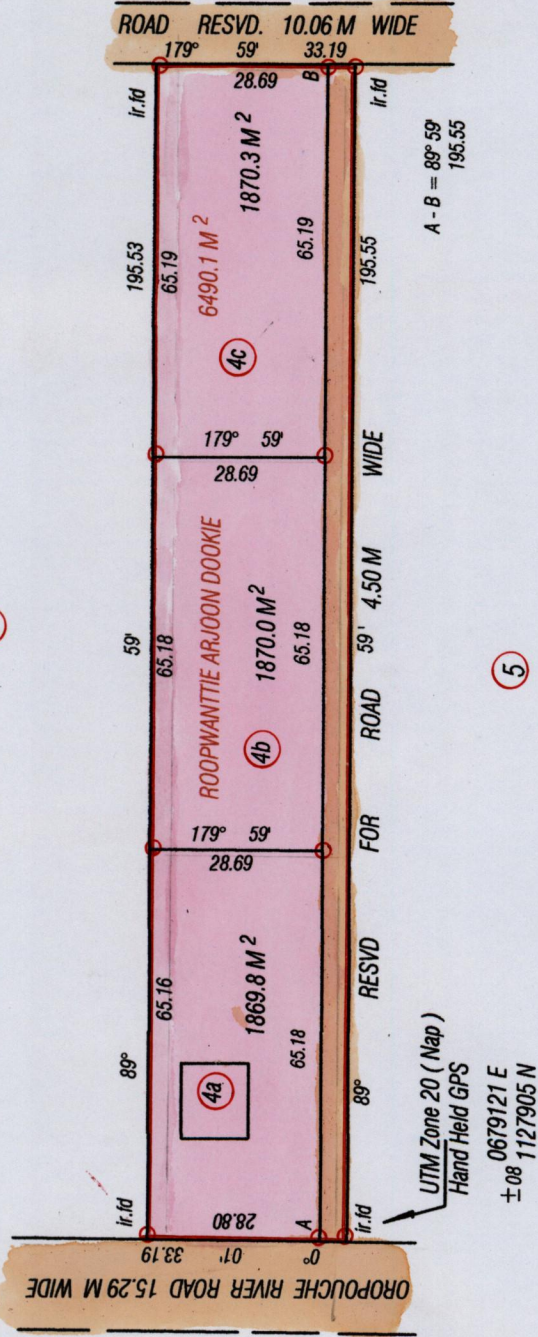
Bk. 322 Fol 147

Ward of Savana Grande  
 County of Victoria  
 Cadastral Sheet G 14 C 64 A  
 4/d



1336/159

159



Approved: *[Signature]*  
 Director of Surveys 20.10.18

Bearings are Cassini Grid based on Solar Obs.  
 Denotes iron put except otherwise stated  
 Note: To obtain compass bearings add/subtract minutes  
 PLAN of 3 Parcels of land coloured Pink in the Ward of Savana Grande  
 Containing five thousand six hundred and ten point one square metres  
 Surveyed by me, with due authority, in January 2010  
 In accordance with Regulation 25 (1) of the Land Surveyors' Regulations 1998 I certify that this plan is correct.

SCALE 1:1250  
 Distances are in metres

Checked by: *[Signature]*  
 Entered: *[Signature]*

*[Signature]*  
 Trinidad and Tobago Land Surveyor 18<sup>th</sup> September, 2010



