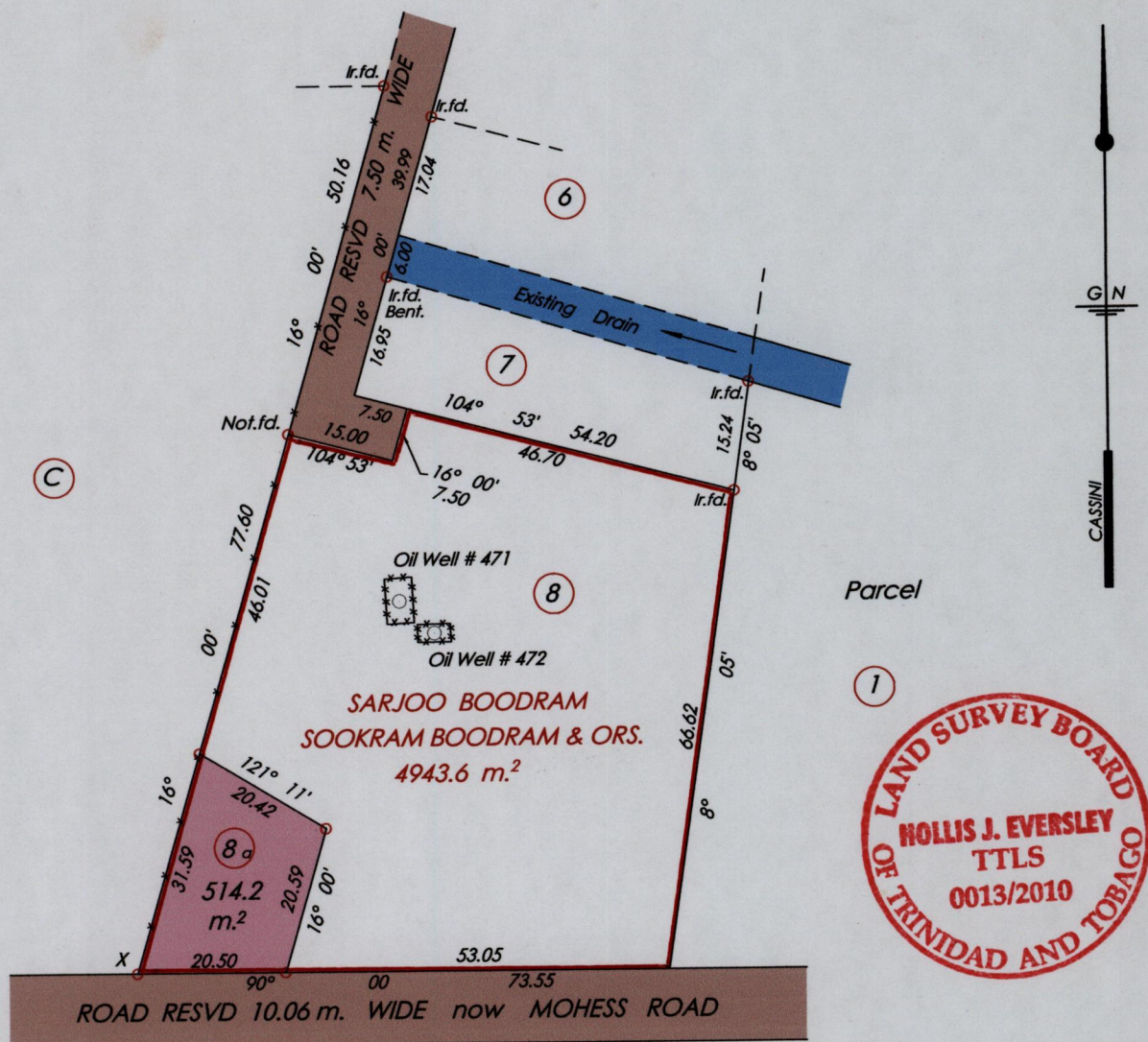


1336

156

R.P.O. Vol. 223 fol. 239
C.T. Vol. 5151 fol. 137
C.T. Vol 5517 fol 479



X = N. 1125535 E. 672345
U.T.M. Zone 20 Naparima +/- 5.00 m.
Hand Held G.P.S.

Bk. 915 fol. 80
Bk. 985 fol. 212

Approved *[Signature]*
Director of Surveys 2010.10.15

○ Denotes Iron Put Except
Otherwise Stated

SCALE: 1: 1000

Note: Bearings are cassini grid based on solar observations Distances are in metres

PLAN of a Parcel of land coloured pink in the Ward of Naparima
Containing five hundred and fourteen point two sq. metres
Surveyed by me, with due authority, in August, 2010
In accordance with Regulation 25 (1) of the Land Surveyors' Regulations 1998,
I certify that this plan is correct.

Checked by *[Signature]* 11/10/10

[Signature]

Entered on Trinidad & Tobago Land Surveyor 2nd Sub Section 2010