

R.P.O. Vol. 112 Fol. 5
C.T. Vol. 1035 Fol. 229
U.P.I.N. No.

"RODNEY TRACE,
LAS LOMAS No.2"

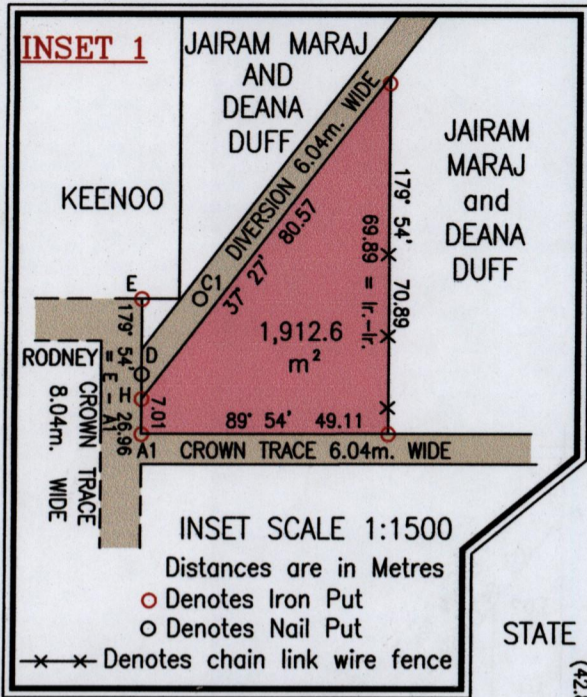
Cadastral Sheet $\frac{24E}{4/a}$, D.4.B.

Ward of Cunupia

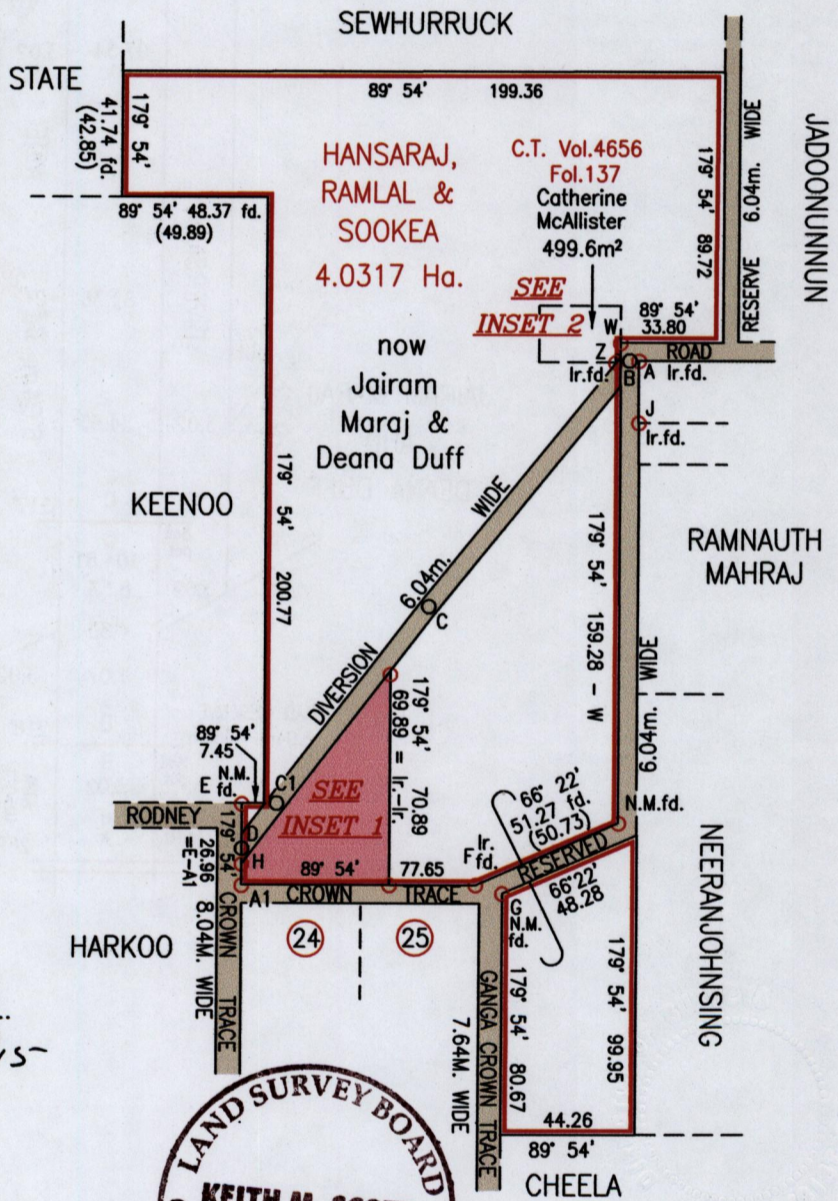
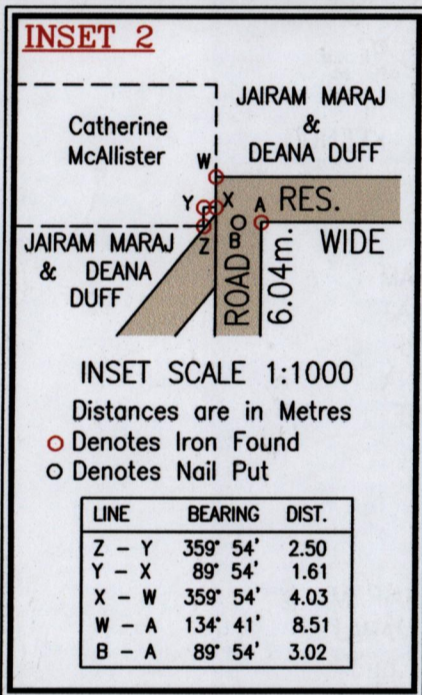
County of Caroni

Vide
Bk. 708:71
Bk. 1195:215
Plan P.F.56

Grid North
Cassini



LINE	BEARING	DIST.
A - B	269° 54'	3.02
B - C	218° 54'	104.81
C - C1	217° 27'	82.36
C1 - D	217° 27'	18.91
D - E	359° 54'	14.99
F - G	107° 21'	9.21
D - H	179° 54'	4.96
A - J	179° 54'	20.56



Approved

[Signature]
Director of Surveys
2010.10.15

A1	E 683698
	N 1168542

Reliability Error ± 2.0 m.
Coordinates are UTM, Naparima 1955 from
Garmin GPSmap 60CSx Handheld GPS Receiver

To obtain compass bearing Add 6 minutes
Bearings are Cassini Grid based on Solar Obs.

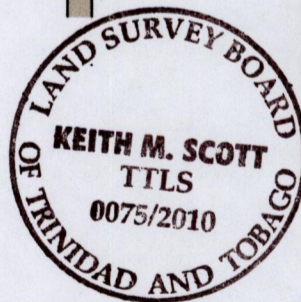
○ Denotes Iron Put unless otherwise stated

Plan of a Parcel of land coloured pink in the Ward of Cunupia
Containing one thousand nine hundred and twelve point six square metres
Surveyed by me, with due authority, in February 2006

In accordance with Regulation 25(1) of the Land Surveyors' Regulations 1998,
I certify that this plan is correct.

Checked by *[Signature]* 11/10/10

Entered on



SCALE 1:2500
Distances are in Metres
○ Denotes Nail Put

P.T.O. for Notes

Trinidad & Tobago Land Surveyor *[Signature]* 5th August 2010

