

1336

1336/144

144

REMAINING PORTION

R.P.O. Vol. 16 Fol. 459

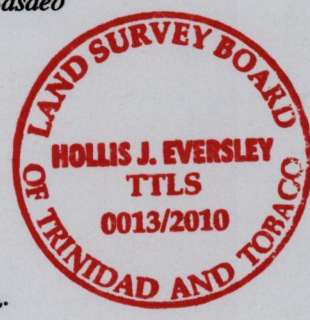
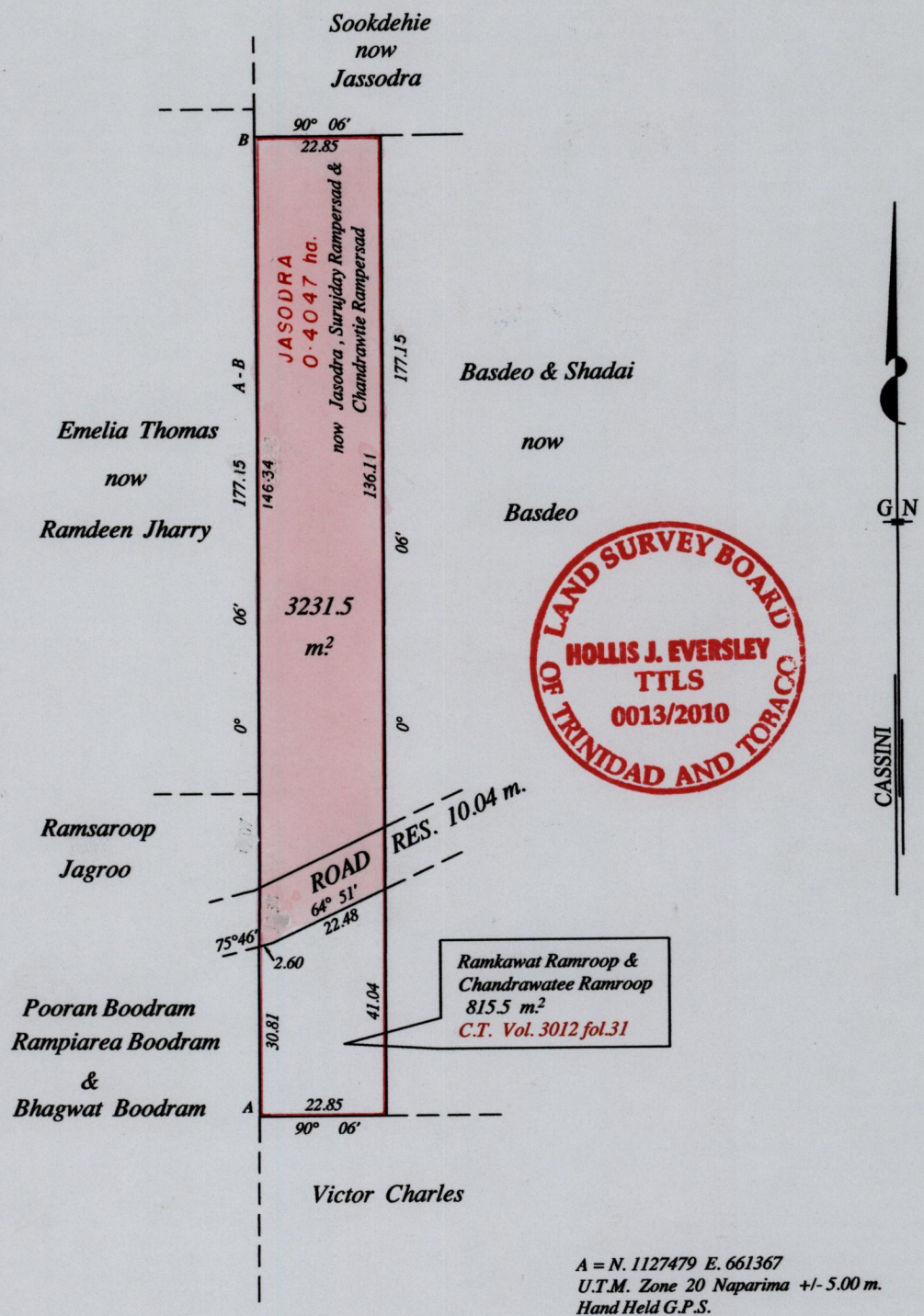
C.T. Vol. 1823 Fol. 25

Ward of Siparia

County of St. Patrick

Cadastral Sheet ( G.12.B. ) 63.D.

2/a



A = N. 1127479 E. 661367  
 U.T.M. Zone 20 Naparima +/- 5.00 m.  
 Hand Held G.P.S.

Bk. 1010 fol. 36  
Bk. 1157 fol. 123

Approved: *[Signature]*  
 Director of Surveys 2010.10.5

SCALE : 1:1250

Note: Bearings are cassini grid based on solar observations Distances are in metres  
 This is a true copy of a diagram of zero point four zero four seven hectares, originally transferred to JASODRA, shewing a portion coloured pink and containing three thousand two hundred and thirty one point five sq.metres being the remainder after one (1) previous transfer of another portion of the land.  
 In accordance with Regulation 25 (1) of the Land Surveyors' Regulations 1998, I certify that this plan is correct.

Checked by *[Signature]* 18/8/10

*[Signature]*

Entered on ..... Trinidad & Tobago Land Surveyor ..... 26<sup>th</sup> April 2010