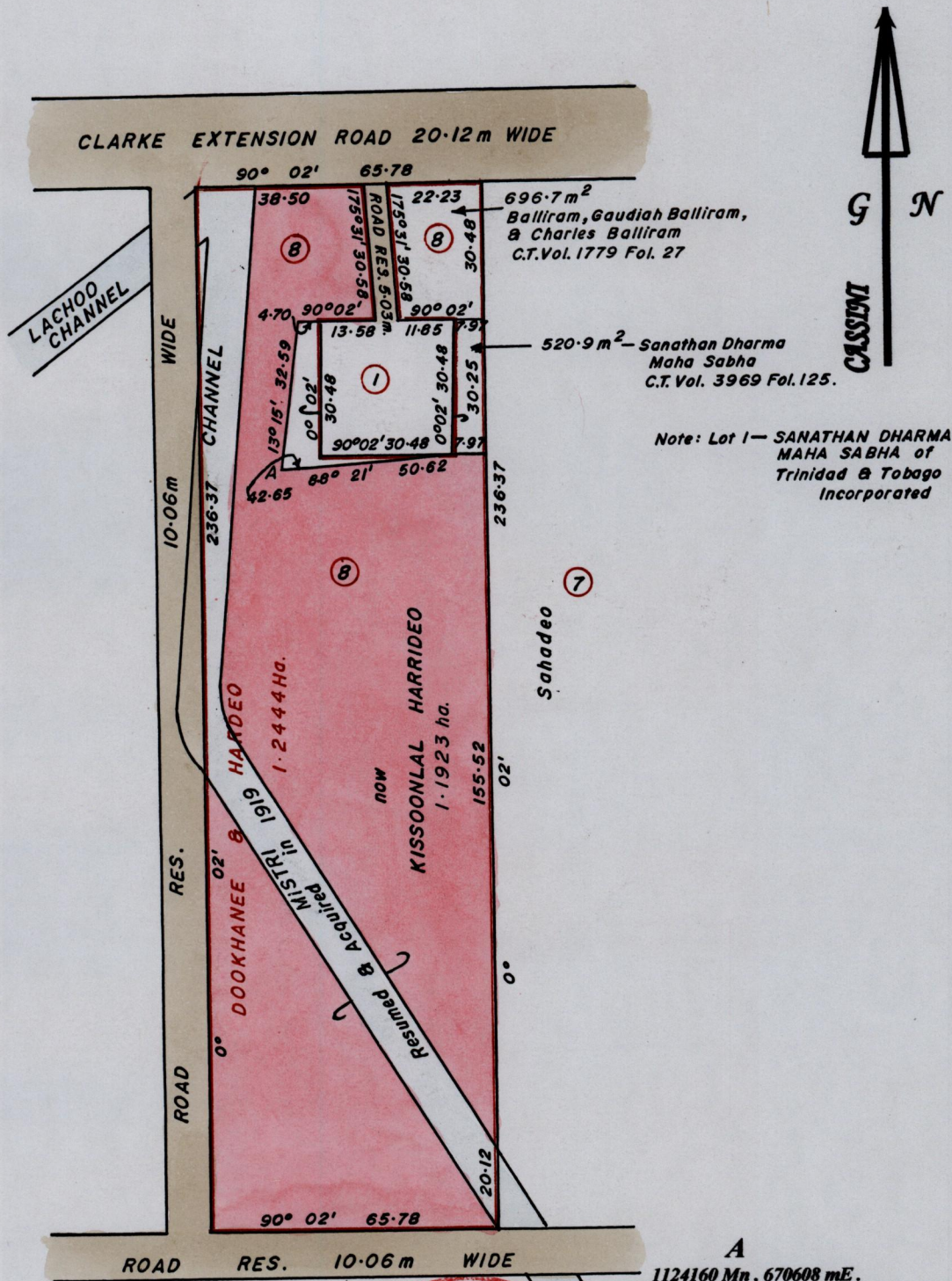


REMAINING PORTION

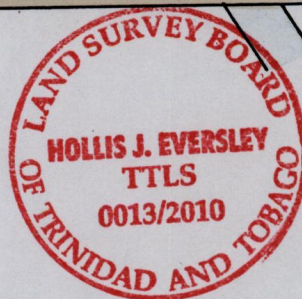
R.P.O Vol. 170 Fol. 13
C.T. Vol. 1196 Fol. 309

Ward of Siparia.
County of St. Patrick.
Cadastral Sheet G.13.K. 63F
3/b



Note: Lot 1 - SANATHAN DHARMA MAHA SABHA of Trinidad & Tobago Incorporated

A
1124160 Mn, 670608 mE.
U.T.M. 20, WGS 84 (+/-5.0m)
GPS Handheld Direct Obs.



Bk. 897 : 32
" 1238 : 221
SCALE 1 : 1500.
Distances are in METRES

Approved.....
Director of Surveys.

This is a true copy of a diagram of one point two four four four hectares, Originally transferred to DOOKHANE & HARDEO showing a portion, Coloured pink and containing one point one nine two three hectares, being the remainder, after two previous transfers of another portion of the land. In accordance with Reg. 25(1) of the Land Surveyors' Regulations 1998, I certify that this plan is correct.

Checked by
5/10/10

Entered

Trinidad and Tobago Land Surveyor.....
25/10/10 2010