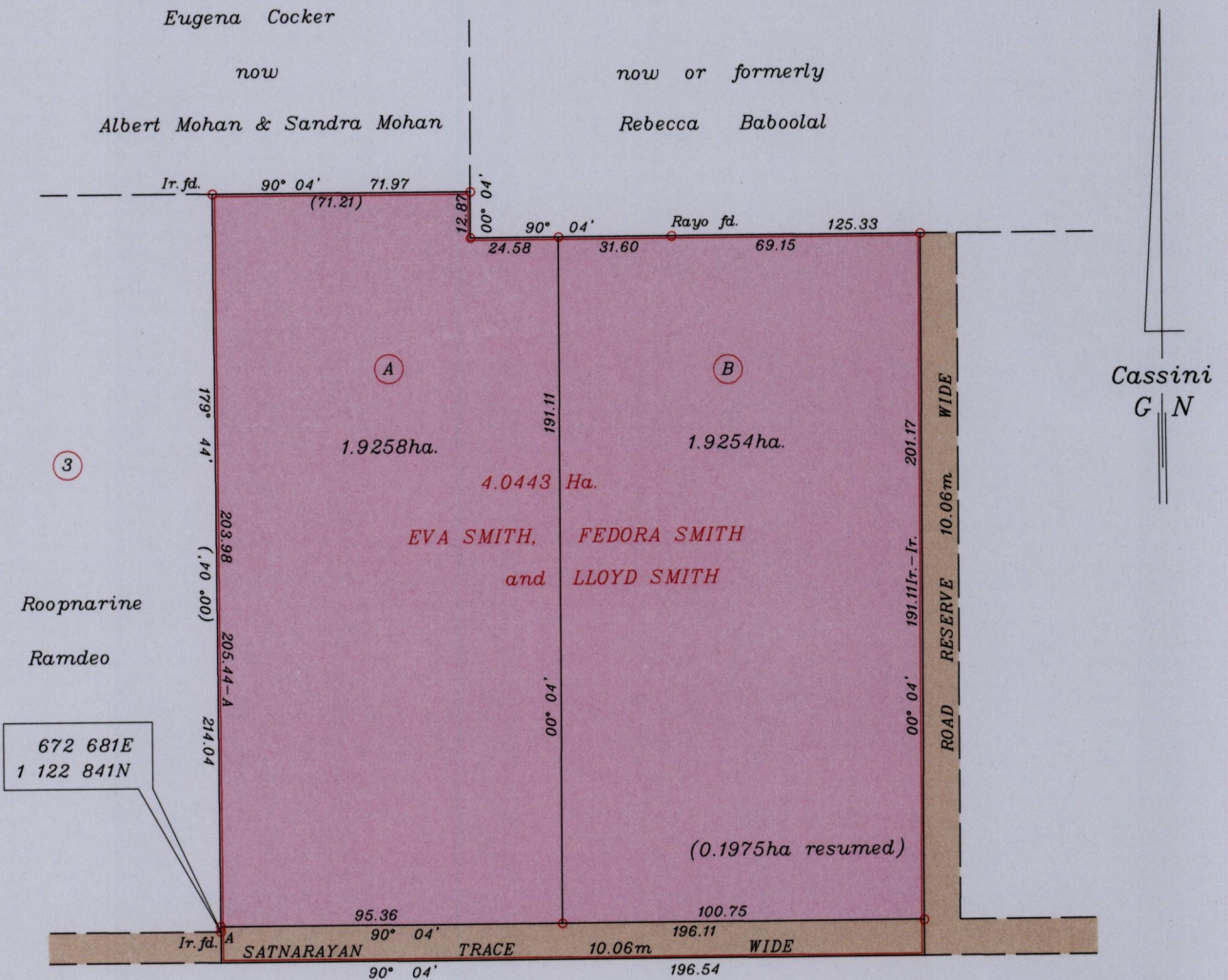


R.P.O. Vol. 251 Fol. 457
C.T. Vol. 4108 Fol. 445

Ward of Siparia
County of St. Patrick
Cadastral Sheet G.13.P., 63F
4/c

VIDE Bk.424 fol.46
Plan F.J.95



672 681E
1 122 841N

Approved *[Signature]*
Director of Surveys 2010.10.7



Co-ordinates are U.T.M. Zone 20 Naparima Datum +/-3m
obtained from handheld GPS

SCALE 1:2000

o denotes Ir. pt. unless otherwise stated

Bearings are Cassini Grid based on Solar Observations

Distances are in metres

PLAN of 2 Parcels of land coloured pink in the Ward of Siparia

Containing together three point eight five one two hectares

Surveyed by me, with due authority, in September 2008

In accordance with Regulation 25(1) of the Land Surveyors' Regulations 1998,

I certify that this plan is correct.

Checked by *[Signature]* 5/10/10

[Signature]

Entered

Trinidad & Tobago Land Surveyor December 07 2009