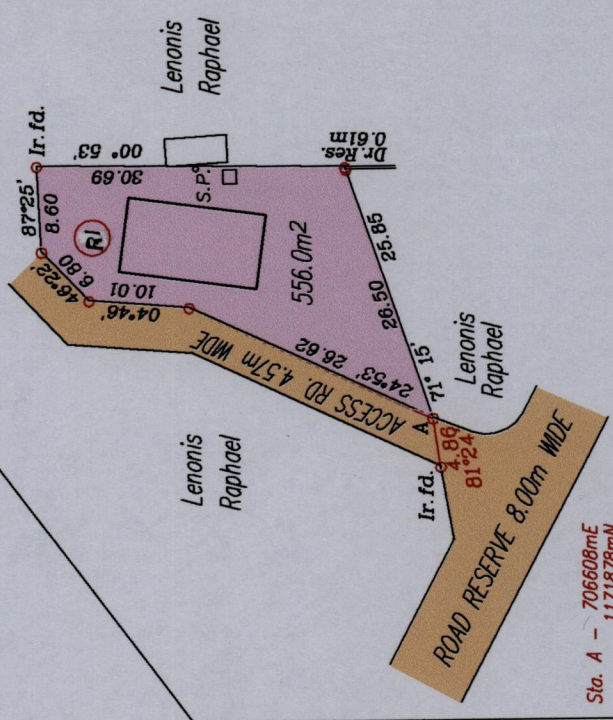
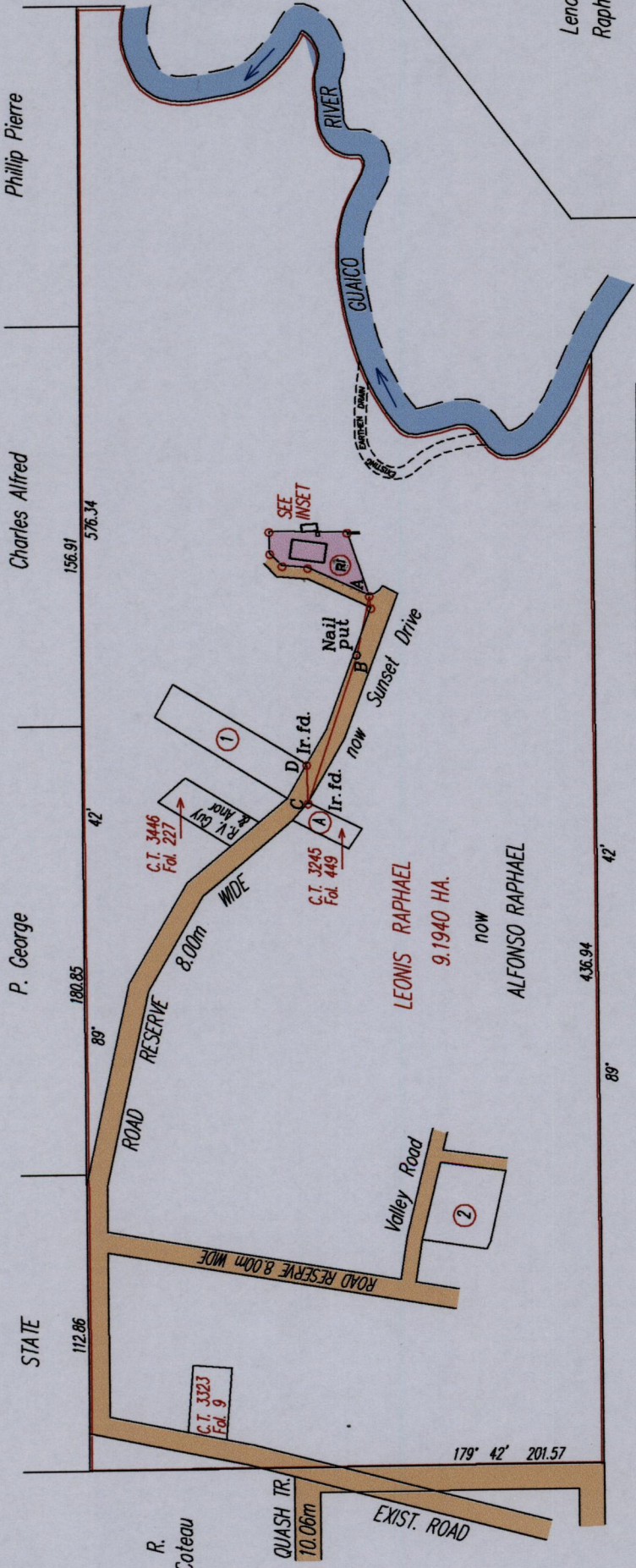
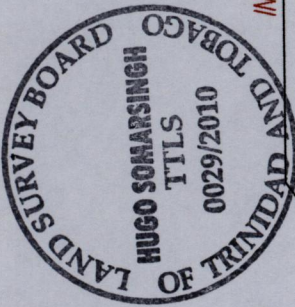


Cadastral Sheet (C.22.J) 25 F  
Ward of Manzanilla  
County of St. Andrew

Vide Plan G.A. 13  
Vide Plan J.A. 33  
Vide Bk. 1197 Fol.123  
Vide Bk. 1280 Fol.198



Sta. A - 706608mE  
(UTM.20,WGS 84(+/-5.0m)  
Hand Held G.P.S. Coordinates

SCALE 1/ 750  
Distances are in metres

Philip Pierre

Charles Alfred

P. George

R. Coteau

LEONIS RAPHAEL  
9.1940 HA.  
NOW  
ALFONSO RAPHAEL

A-B	281° 54'	24.30
B-C	288° 41'	60.57
C-D	88° 17'	15.20

SCALE 1/ 2500

Distances are in metres

○ Denotes Iron found except where otherwise stated.

Approved: *[Signature]*  
Director of Surveys 2010.10.7

Plan of a Parcel of land coloured pink in the Ward of Manzanilla  
Containing five hundred and fifty six point zero square metres  
Surveyed by me, with due authority in July 2008 for Alfonso Raphael

In accordance with regulation 25 (1) of the Land Surveyors' Regulations 1998,

I certify that this plan is correct.

Checked by: *[Signature]*  
Entered on: .....  
Trinidad and Tobago Land Surveyor: *[Signature]* 23rd March 2010  
2009

U.P.R.N. No.  
R.P.O.Vol. 7 Fol. 547  
C.T. Vol Fol.

