

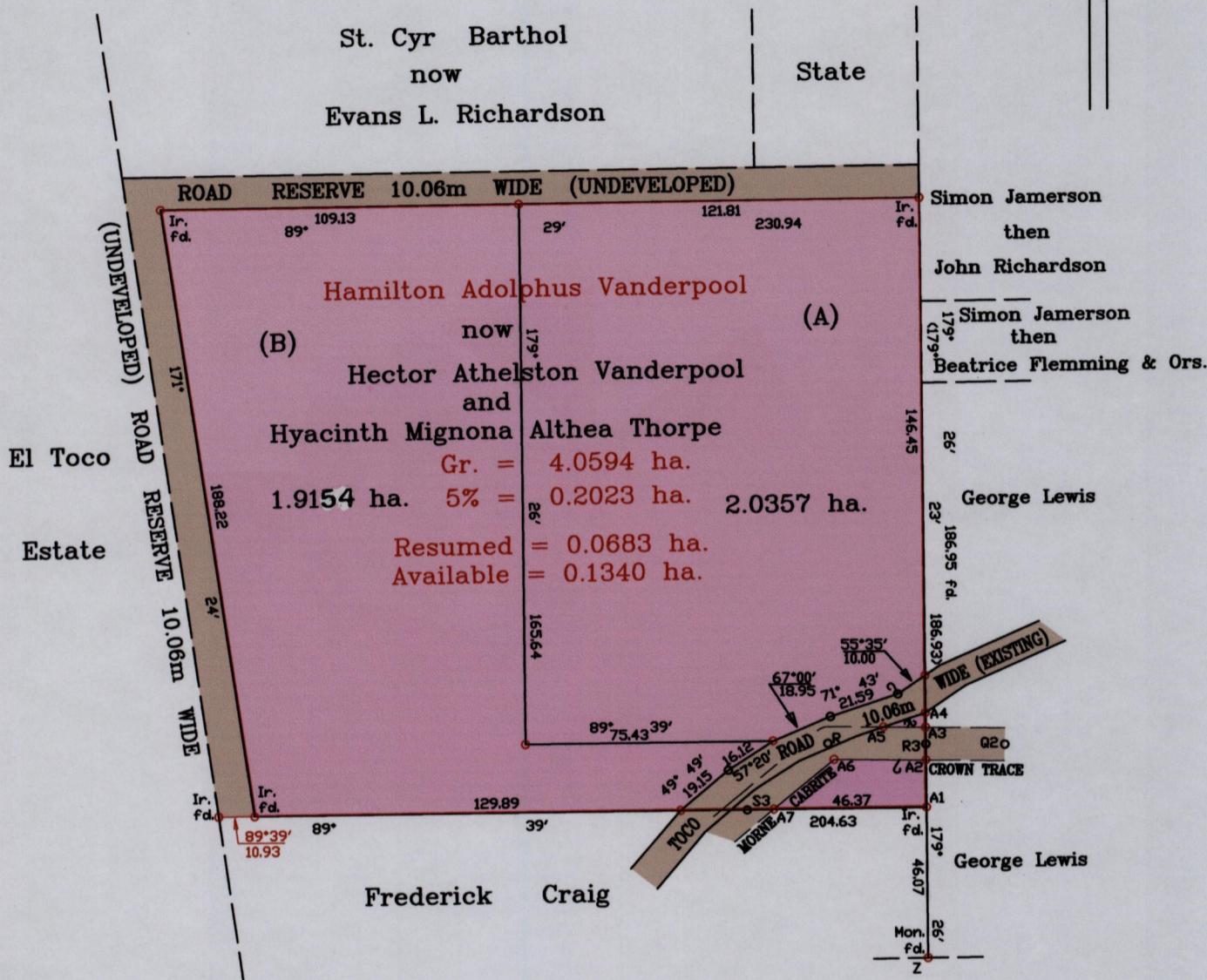
R.P.O. Vol.123 Fol. 609

C.T. Vol.3267 Fol. 55

Ward of Toco

County of St. David.
L.&S.Bk.127 fol.231
Bk.707 fol.21
Plan B.B.31

G N
Cassini



| | | | |
|-------|------|-----|-------|
| A1-A2 | 359° | 26' | 14.48 |
| A2-A6 | 270° | 44' | 27.88 |
| A6-A7 | 230° | 26' | 23.80 |
| A7-S3 | 269° | 02' | 8.06 |
| S3-R | 50° | 26' | 31.81 |
| R-R3 | 90° | 43' | 29.72 |
| R3-Q2 | 90° | 43' | 23.92 |
| R3-A3 | 359° | 26' | 5.07 |
| A3-A4 | 359° | 26' | 4.46 |
| A4-A5 | 251° | 22' | 13.41 |
| A3-A5 | 270° | 49' | 12.75 |



Approved *[Signature]*
Director of Surveys. 2010.8.30

Note : Coordinates obtained by hand held G.P.S. N. 1,196,651
W.G.S.84 UTM Zone 20 (+/-) 5m Z=E. 725,252

SCALE: 1/2000

Denotes iron put unless otherwise stated
Bearings based on solar observations .

Note : To obtain compass bearing add minutes Distances are in metres.

PLAN of 2 parcels of land coloured pink in the Ward of Toco.

Containing together three point nine five one ONE hectares.

Surveyed by me, with due authority, in August, 2007 for Samuel Thorpe & Ors.

In accordance with regulation 25 (1) of the Land Surveyors' Regulations 1998,

I certify that this plan is correct.

Checked by *[Signature]* 5/8/10

Entered on

Trinidad & Tobago Land Surveyor *[Signature]* 5-7-10