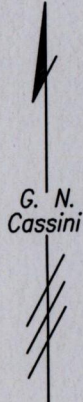


R.P.O. Vol. 7 Fol. 287
 C.T. Vol. 525 Fol. 376

Cadastral Sheet 26A C.22.L.
 Ward of Manzanilla ^{3/c}
 County of St. Andrew

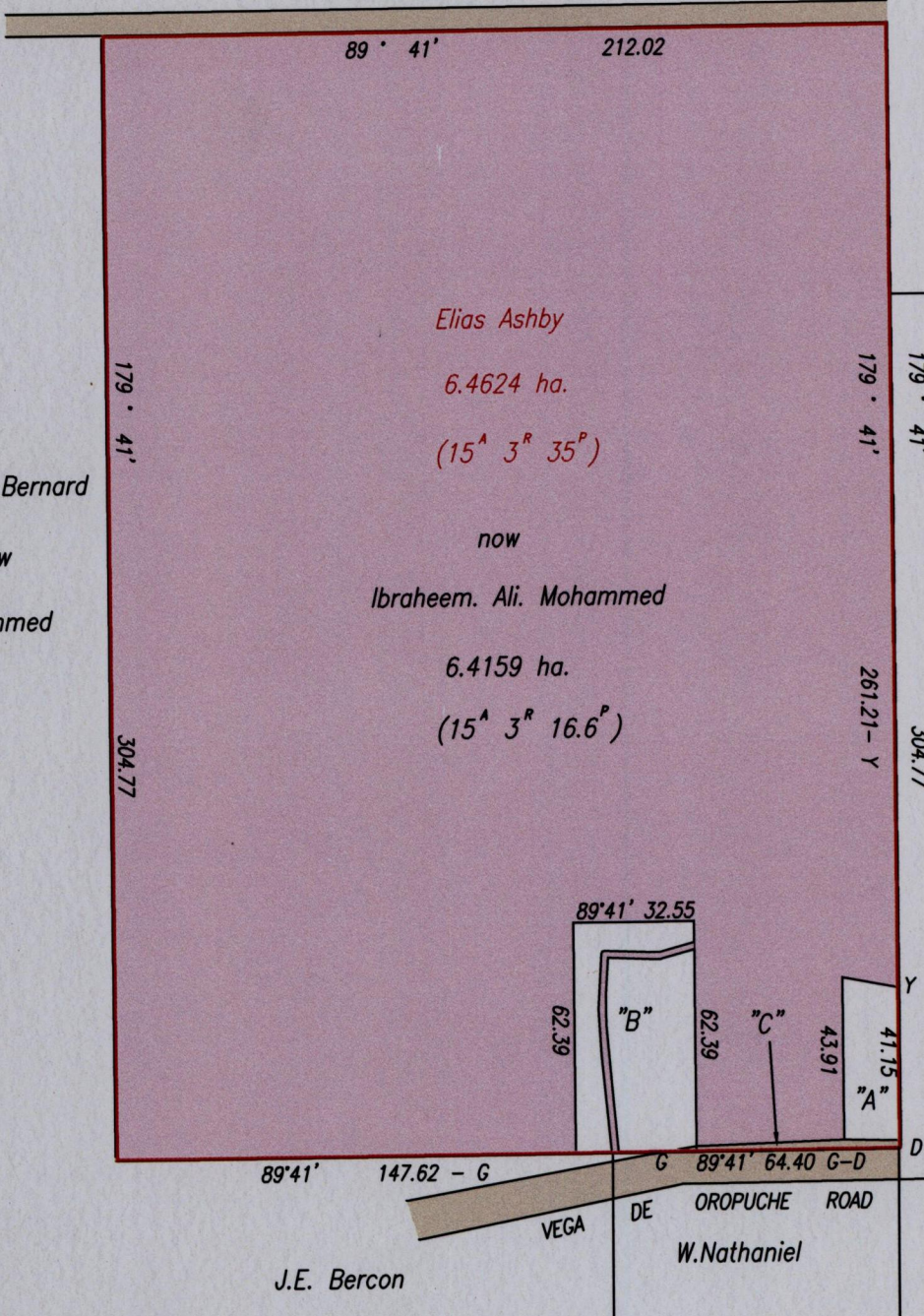


"Remaining Portion Plan"

Vide: Bk. 1124 fol. 212
 Bk. 1005 fol. 160

CROWN then J.M. Pappy
 Road Reserve 6.04m wide

Abraham Bernard
 now
 Mohammed



CROWN
 then
 C.Oliviel

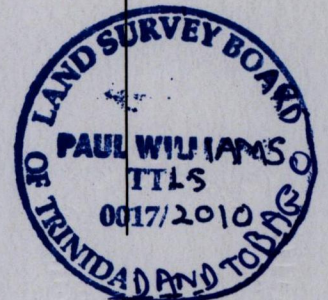
CROWN then M. Leesoh

Elias Ashby
 6.4624 ha.
 (15^A 3^R 35^P)

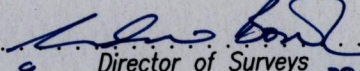
now
 Ibraheem. Ali. Mohammed
 6.4159 ha.
 (15^A 3^R 16.6^P)

J.E. Bercon

W.Nathaniel

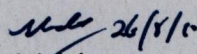


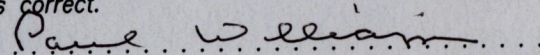
"A"	C.T. Vol. 2683 Fol. 231	Willy Windsor & Angela Wilson Windsor	464.5 m ²	5,000 sq.ft.
"B"	C.T. Vol. 2099 Fol. 35	Popo Mangaree Hulasie	0.1882 Ha.	20,260 sq.ft.
"C"	1902 Resumption Book Fol. 11	THE STATE	0.0127 Ha.	(0 ^A 0 ^R 5 ^P)

Approved 
 Director of Surveys 2010.8.30

SCALE 1:2000
 Distances are in metres

This is a true copy of a diagram of six point four six two four hectares originally transferred to ELIAS ASHBY, showing a portion coloured pink and containing six point four one five nine hectares, being the remaining portion after two previous transfers and one resumption
 In accordance with Regulation 25 (1) of the Land Surveyors' Regulations 1998, I certify that this plan is correct.

Checked by  26/8/10


 Paul Williams

Entered on

Trinidad & Tobago Land Surveyor. 8th July 2010