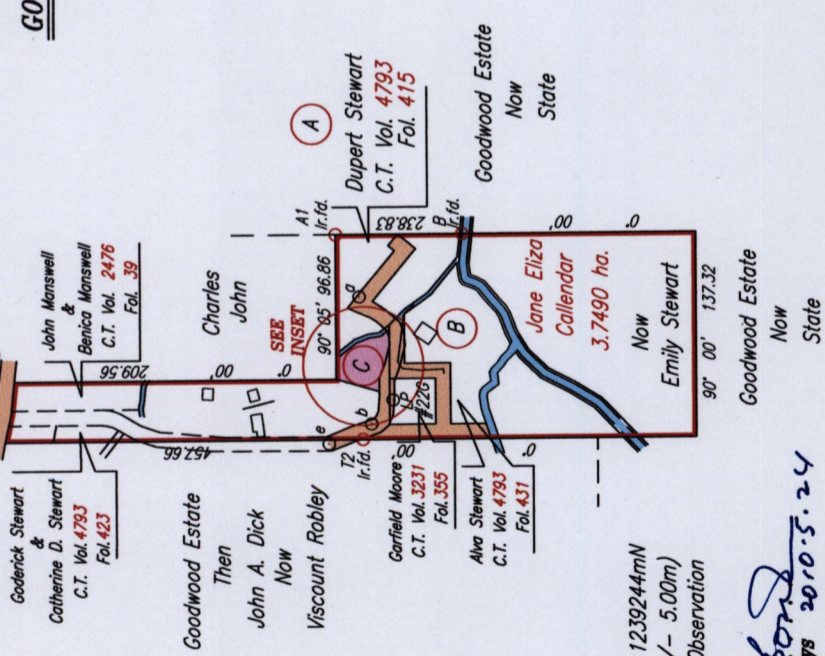


GOODWOOD

WINDSOR RD



Coordinates of T2 (Ir.fid): 0757323mE, 1239244mN
U.T.M. 20 Napanima (+/- 5.00m)
G.P.S. Direct Observation

Approved *[Signature]*
Director of Surveys 2010.5.24

- Denotes Peg put except where otherwise stated
- Denotes Iron put except where otherwise stated

Bearings are Cassini Grid based on Solar Observations

PLAN of a Parcel of land coloured pink in the Ward of Tobago

Containing nine hundred and twenty nine point eight square metres

Surveyed by me, with due authority, in December 2008

In accordance with Regulation 25 (1) of The Land Surveyors' Regulations 1998,

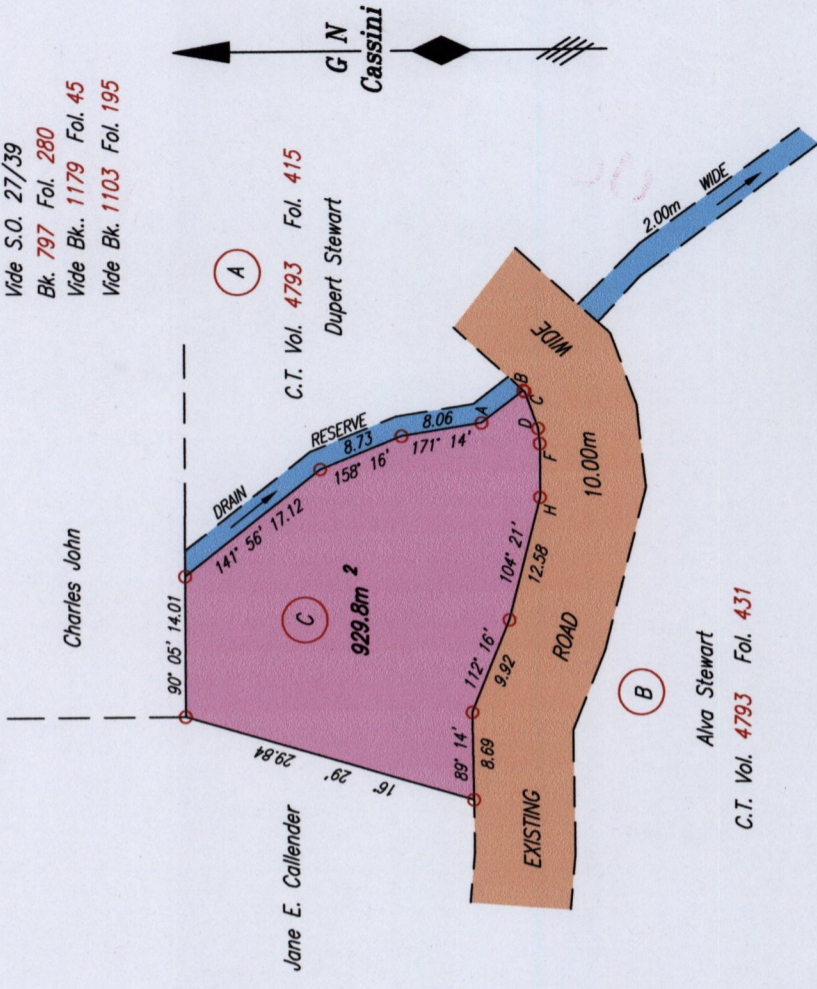
I certify that this plan is correct.

Checked by *[Signature]*

Entered on

Trinidad & Tobago Land Surveyor
C:\LESS 2008\TOBAGO\WELSON,JOANNE-LOT C\10.dwg FILE NO: TH016

INSET



Vide S.O. 27/39
Bk. 797 Fol. 280
Vide Bk. 1179 Fol. 45
Vide Bk. 1103 Fol. 195

Alva Stewart
C.T. Vol. 4793 Fol. 431

SCALE 1:750

Distances are in METRES

LEGEND

From-To	Bearing	Distance
A - B	142° 47'	5.28
B - C	222° 15'	0.16
C - D	250° 15'	3.90
D - F	263° 55'	1.52
F - H	270° 02'	5.34
A1 - a	249° 31'	44.32
a - b	264° 47'	85.59
b - LP#226	132° 24'	21.33
b - e	335° 01'	31.14
e - T2	172° 42'	22.68

