

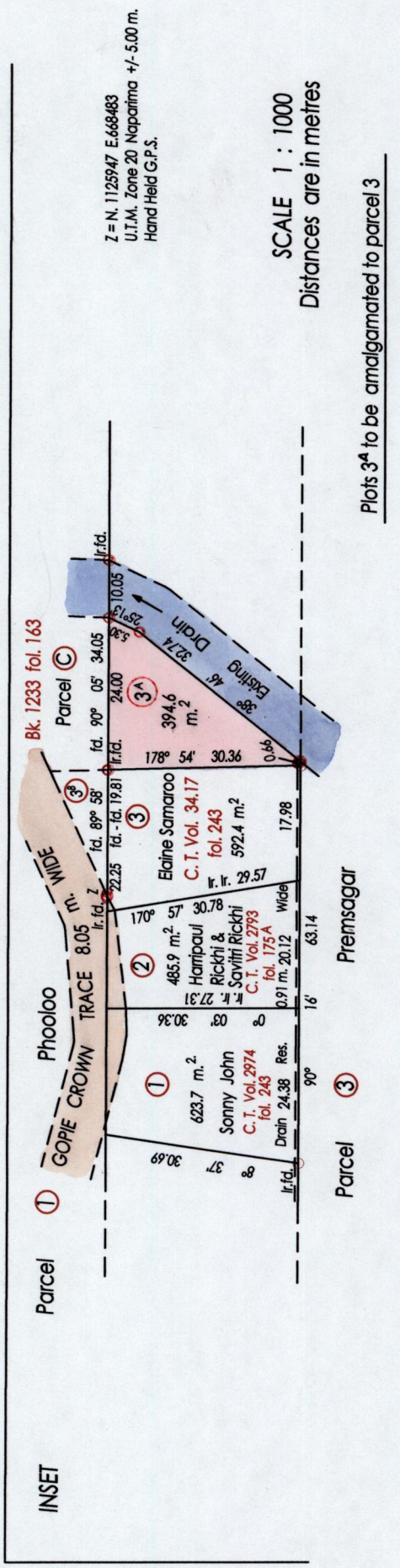
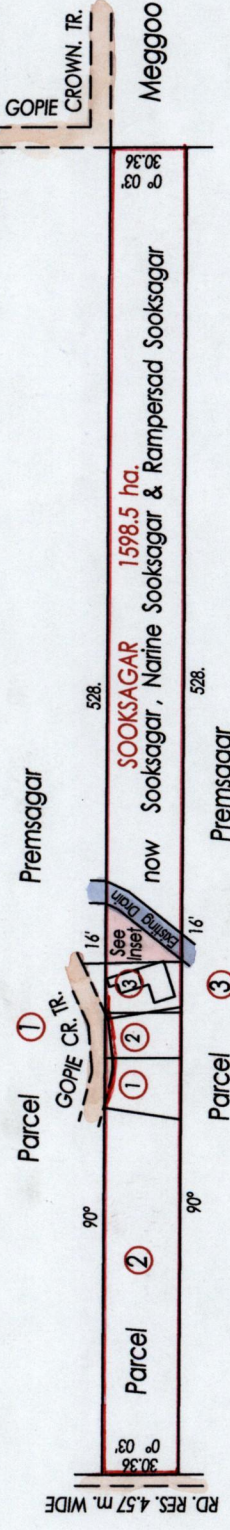
1336

1336/119 119

Ward of Siparia
County of St. Patrick
Cadastral Sheet G. 13 E. & F 63E
2/d

R. P. O. Vol. 96
C. T. Vol. 1888

Fol. 217
Fol. 435

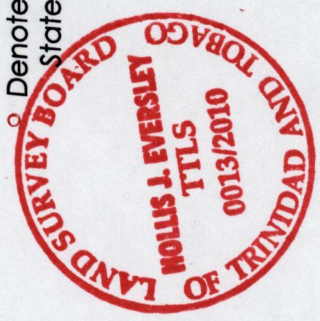


Approved *[Signature]* Director of Surveys 2010.8.24
Bk 1137 fol. 198
Denotes Iron Put Except Stated Otherwise

SCALE 1 : 3000

Bearings are Cassini Grid based on Solar Observations Distances are in Metres
PLAN of a Parcel of land coloured pink in the Ward of Siparia
Containing three hundred and ninety four point six sq. metres
Surveyed by me, with due authority in, Nov. 2007

In accordance with Regulation 25 (1) of the Land Surveyors' Regulations 1998,
I certify that this plan is correct.



Checked by *[Signature]*
Entered on Trinidad & Tobago Land Surveyor 2010