

R.P.O Vol. 59 Fol. 2010

C.T. Vol. 2292 Fol. 247

Coordinates

Ir.f.d.B : N 1140847  
E 672019

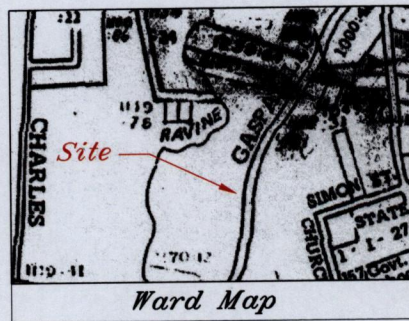
Datum Definition : U.T.M. Zone 20 Naparima

Error Statement : ( $\pm 4m$ )

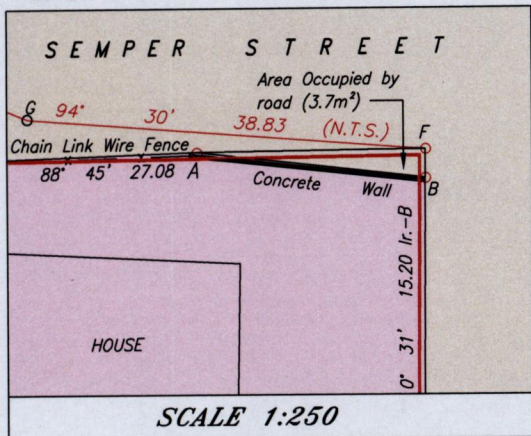
Source : Magellan Hand Held GPS

Ward of Pointe-a-Pierre  
County of Victoria

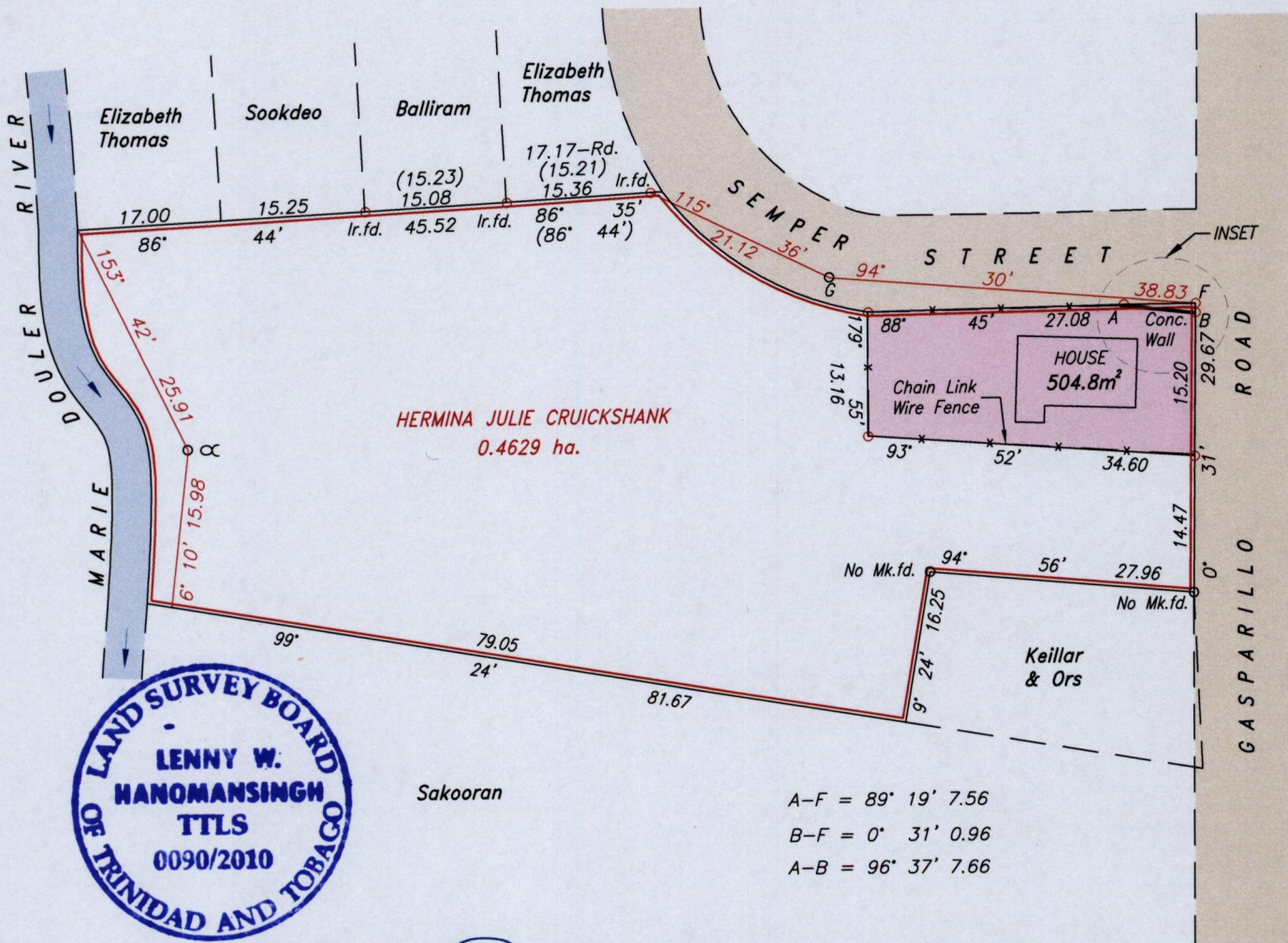
Cadastral Sheet (D.22.0.),  $\frac{53C}{2/c}$



INSET



Parcel Address: #29 Caratal Road Gasparillo



A-F = 89° 19' 7.56  
B-F = 0° 31' 0.96  
A-B = 96° 37' 7.66

Approved: *[Signature]*  
Director of Surveys 2010.8.20

SCALE 1:750

○ Denotes Iron put except otherwise stated.

Note: Bearings are U.T.M. grid based on solar observations.

Distances are in metres.

Plan of a Parcel of land coloured pink in the Ward of Pointe-a-Pierre

Containing five hundred and four point eight square metres.

Surveyed by me, with due authority, in May 2008.

In accordance with Regulation 25(1) of the Land Surveyors' Regulations 1998,  
I certify that this plan is correct.

Checked by: *[Signature]* 18/8/10

*[Signature]*  
Trinidad & Tobago Land Surveyor 11/08/2010.

Entered .....