

R.P.O. Vol. 169 Fol. 587

Ward of Siparia

C.T. Vol. 3747 Fol. 57

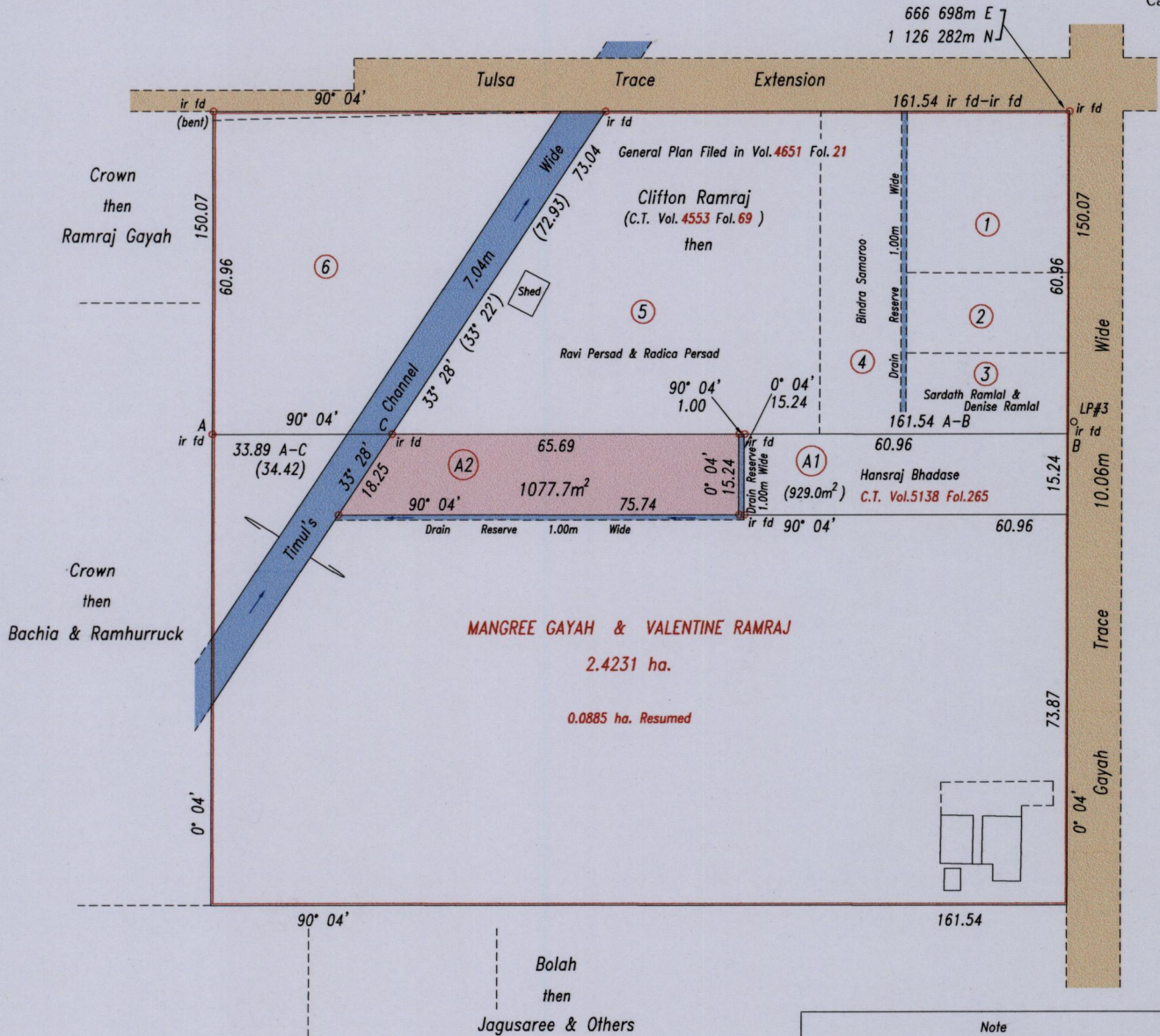
County of St. Patrick

U.P.I.N. No.:

Cadastral Sheet G.12.H. 63E
2/a, 2/c

Source: GPS (Hand Held)
Error Statement: +/- 5m
Datum: Naparima, UTM (Zone 20).

G.N. Cassini



| Note | |
|--|--|
| Parcel (A2) is to be amalgamated with Parcel (5) | |

Reference: Bk.402 Fol.65
Bk.1227 Fol.26

Approved

[Signature]
Director of Surveys 2010.8.20

SCALE 1: 1250

Distances are in metres

Bearings are Cassini Grid based on Solar Observations

o Denotes iron pul except otherwise stated

PLAN of a parcel of land coloured pink in the Ward of Siparia
Containing one thousand and seventy seven point seven square metres
Surveyed by me, with due authority, in February 2009

In accordance with Regulation 25(1) of the Land Surveyors' Regulations 1998, I certify that this plan is correct.

Checked by *[Signature]*
Entered

[Signature]
Trinidad & Tobago Land Surveyor 2/7/2009

