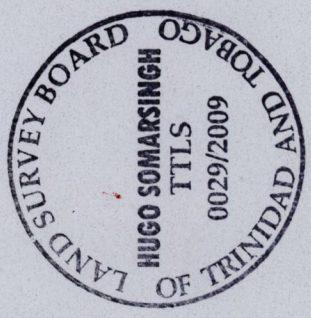
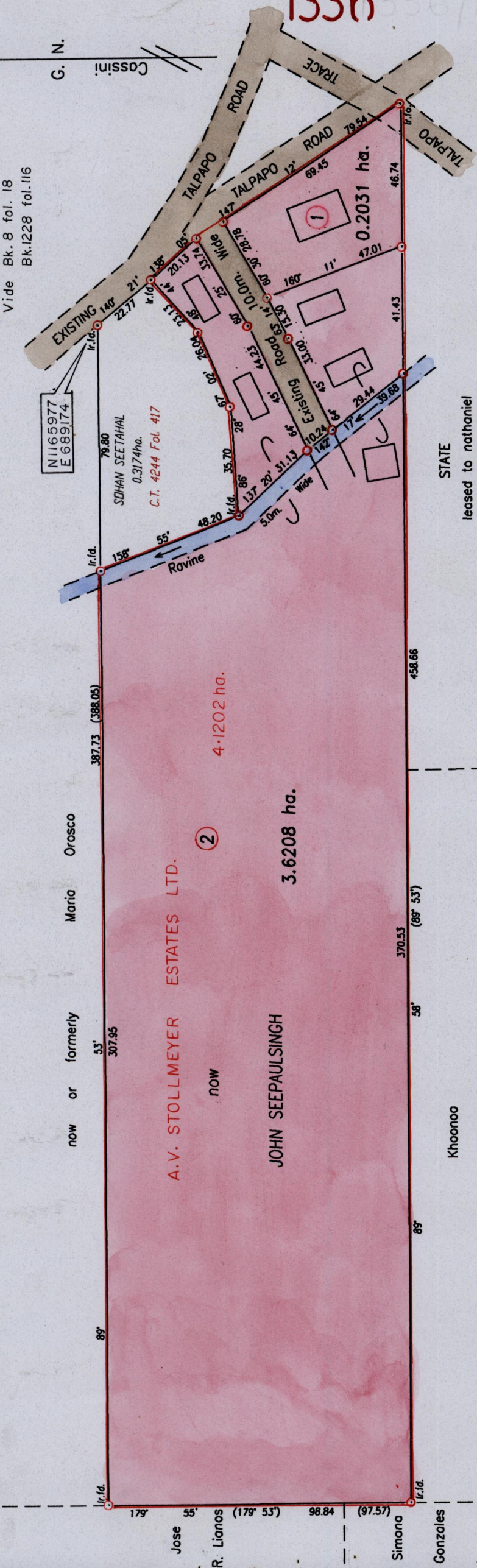


Cadastral Sheet D.5.I. $\frac{34C}{2/a}$
 Ward of San Rafael
 County of St. George
 Vide Bk. 8 fol. 18
 Bk. 1228 fol. 116

R.P.O. Vol. 1 Fol. 353
 C.T. Vol. 2067 Fol. 241



Coordinates based on hand held G.P.S. (Naparima 20) ±5m.

SCALE 1/1500

Distances are in metres

PLAN of 2 Parcels of land coloured pink in the Ward of San Rafael
 Containing altogether three point eight two three nine hectares.

Surveyed by me, with due authority, in April 2007

In accordance with Regulation 25 (1) of the Land Surveyors' Regulations 1998, I certify that this plan is correct.

Approved *[Signature]*
 Director of Surveys 2010.8.12

Denotes Iron put except where otherwise stated
 Bearings are based on Solar Observations

Checked by *[Signature]* 2010-08-07
 Entered on... Trinidad & Tobago Land Surveyor. *[Signature]* 2009.

1336 336/100

1000