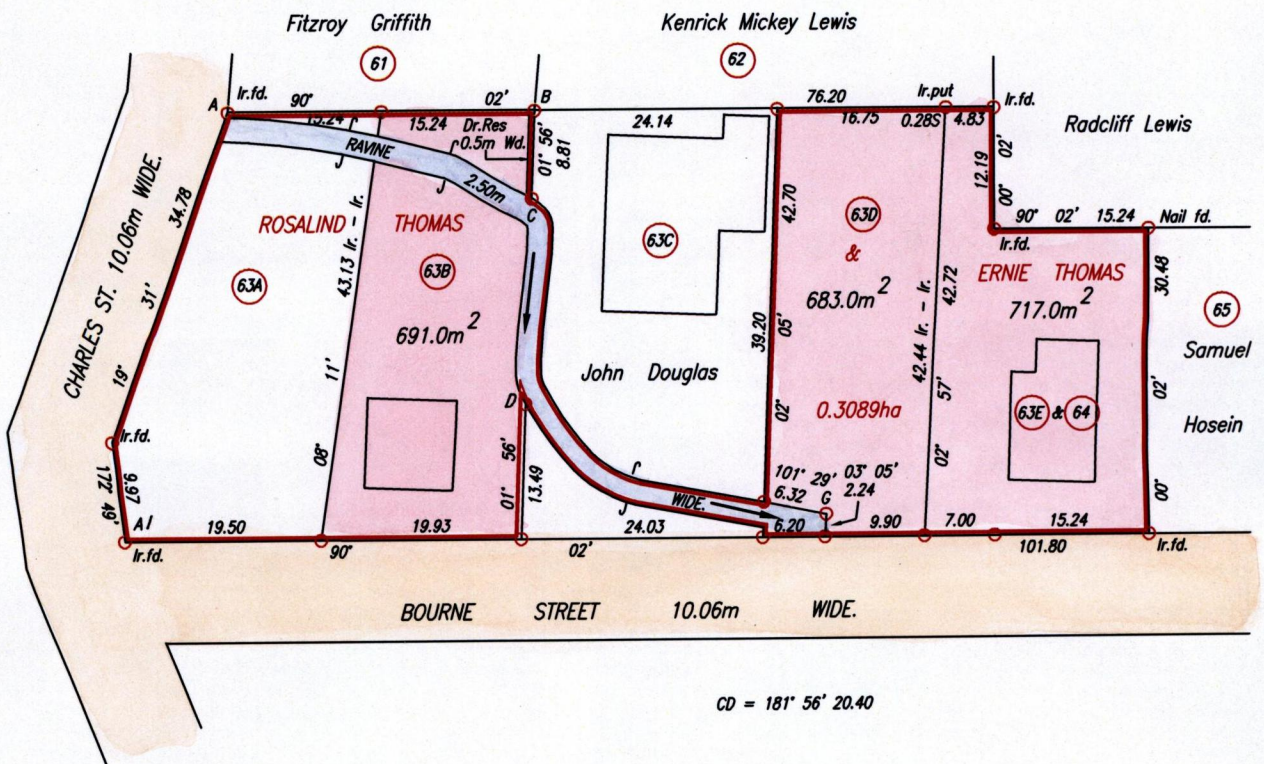


R.P.O. Vol. Fol.
C.T. Vol. 5077 Fol. 189

Cadastral Sheet D.22.K. 53C
2/c
Ward of Pointe - a - Pierre.
County of Victoria
Gasparillo

Vide Bk. 1241 fol 39
Vide Bk. 1418 fol 67

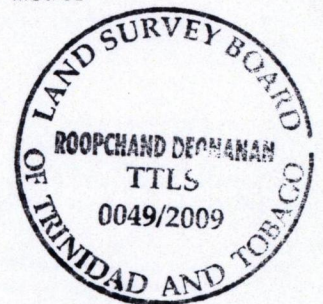


Ir.f.d. A1: 671971mE, 1142277mN
(U.T.M. 20, WGS 84 (+/-5m)
Coordinates obtained from
hand held GPS.

Approved *[Signature]*
Director of Surveys 2010.2.3

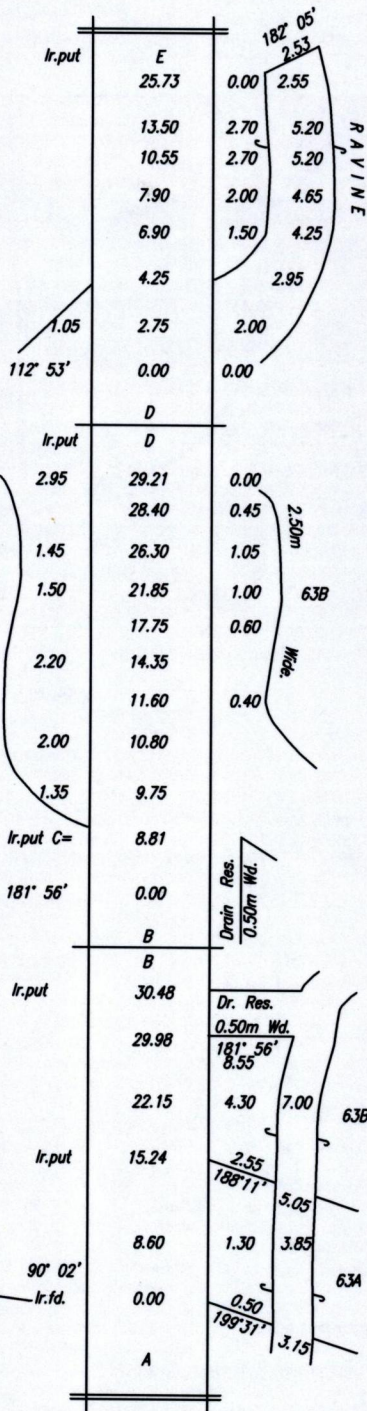
SCALE 1:750
Distances are in Metres

○ Denotes Iron put except otherwise stated.
Bearings are based on Solar Observations (Cassini Grid.)
PLAN of 3 Parcels of land coloured pink in the Ward of Pointe - a - Pierre.
Containing together zero point two zero nine one hectare.
Surveyed by me, with due authority, in October 1992.
In accordance with Regulation 25(1) of the Land Surveyors' Regulations 1998,
I certify that this plan is correct.



Checked by *[Signature]* 25/11/10

Entered on Trinidad & Tobago Land Surveyor 28th September .2009
PATH = EV700 C:\Drawings04\R&E Douglas.dwg.



1333/94