

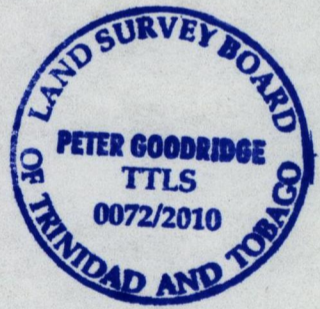
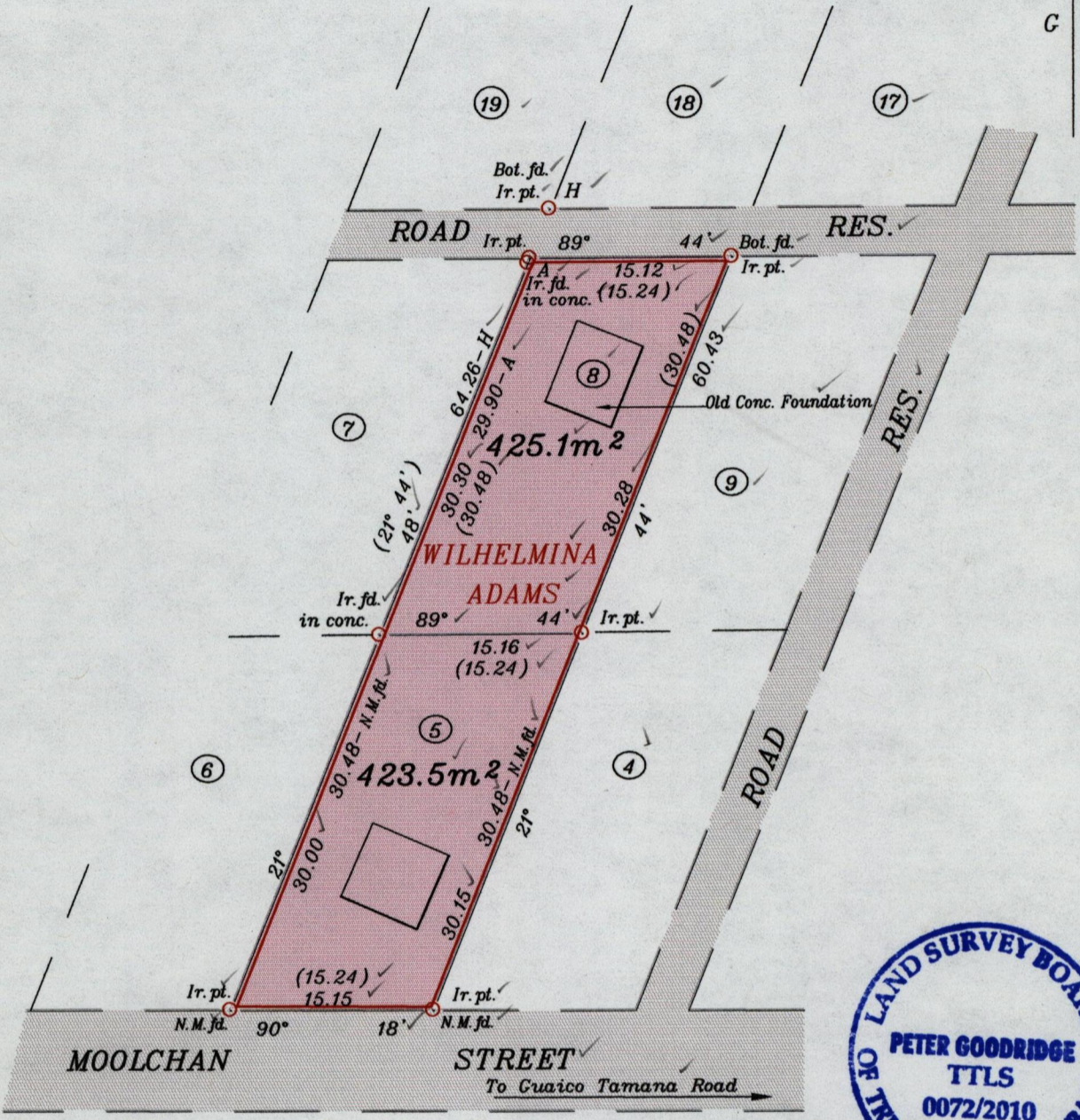
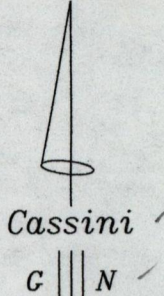
1333

91

Cadastral Sheet C.21.P. 25F
Ward of Turure
County of St. Andrew

R.P.O. Vol. 175 Fol. 369
C.T. Vol. 997 Fol. 51

Bk. 753 fol. 52



Approved *[Signature]*
Director of Surveys 2010.2.2

Bk. 1249 vol. 2
fol. 281

SCALE 1 : 500

Distances are in metres

○ Denotes Ir. fd. except otherwise stated.
Bearings are based on Solar observations.

PLAN of 2 parcels of land coloured pink in the Ward of Turure
Containing together Eight hundred and forty eight point six sq. metres
Surveyed by me with due authority on August, 1999.
In accordance with Reg. 25(1) of the Land Surveyors' Regulations 1998.

I certify that this plan is correct.

Checked by *J.P.* 10/02/01
Entered on.....

[Signature] TTLS
Land Surveyor 1st February, 2010.