

1333

86

R.P.O. Vol. 253 Fol. 623

C.T. Vol. 783 Fol. 199

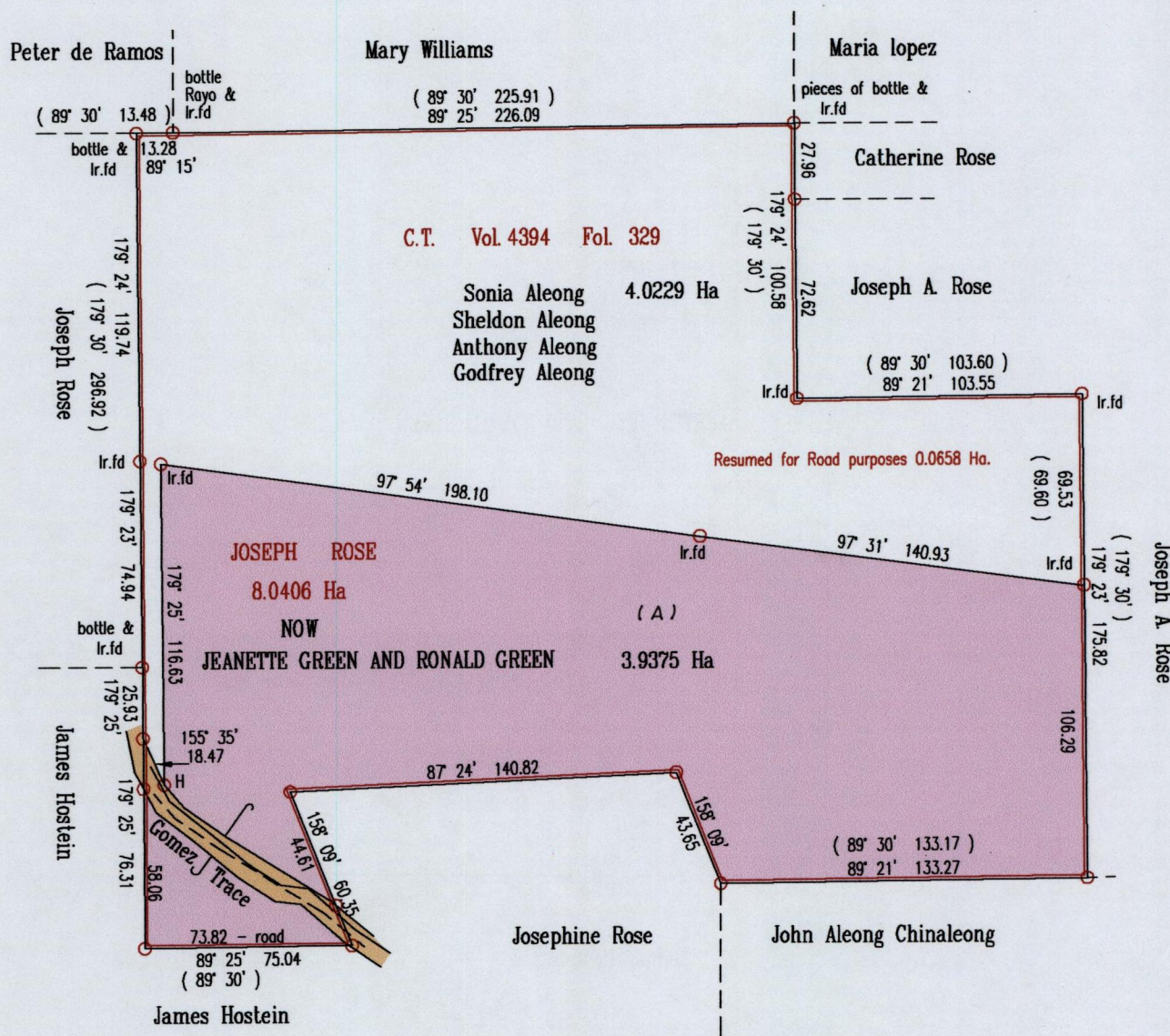
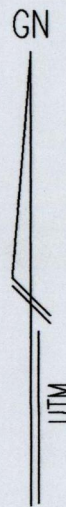
U.P.R.N. No.

Cadastral Sheet $\frac{14C}{2/b/3}$, B.15.B

Ward of Blanchisseuse

County of St. George

Vide
Bk. 1280:104
Bk. 47:173



Hand held GPS Coordinates of Ir pt H
 (690478 mE, 1188029 mN)
 (U.T.M. 20, WGS 84 (+/- 5.0 m))

Approved

[Signature]
 Director of Surveys 2009.12.18



SCALE 1:2500

Distances are in Metres

Bearings are U.T.M Grid based on Solar Obs.
 ○ Denotes Iron Put unless otherwise stated
 Plan of a Parcels of land coloured pink in the Ward of Blanchisseuse
 Containing three point nine three seven five hectares
 Surveyed by me, with due authority, in September 2009

In accordance with Regulation 25(1) of the Land Surveyors' Regulations 1998, I certify that this plan is correct.

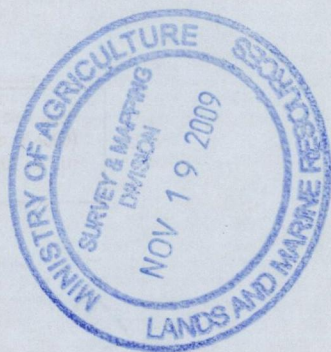
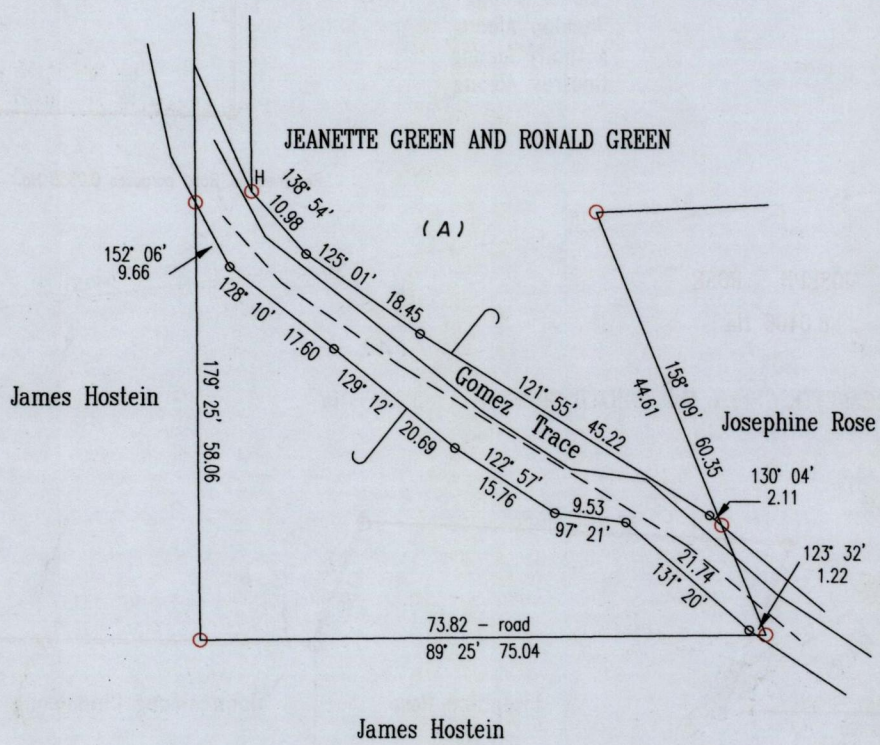
Checked by *[Signature]*

[Signature]

Entered on

Trinidad & Tobago Land Surveyor *[Signature]* / November 2009

GN
U.T.M



Northern edge of Gomez Trace plotted from field observations
 Southern edge of Gomez Trace plotted from W&H Field Book Vol.12

- Denotes no mark put
 - Denotes Iron Put unless otherwise stated
- Bearings are U.T.M Grid based on Solar Obs.

SCALE 1:1000
 Distances are in Metres

1333/86