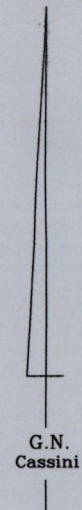
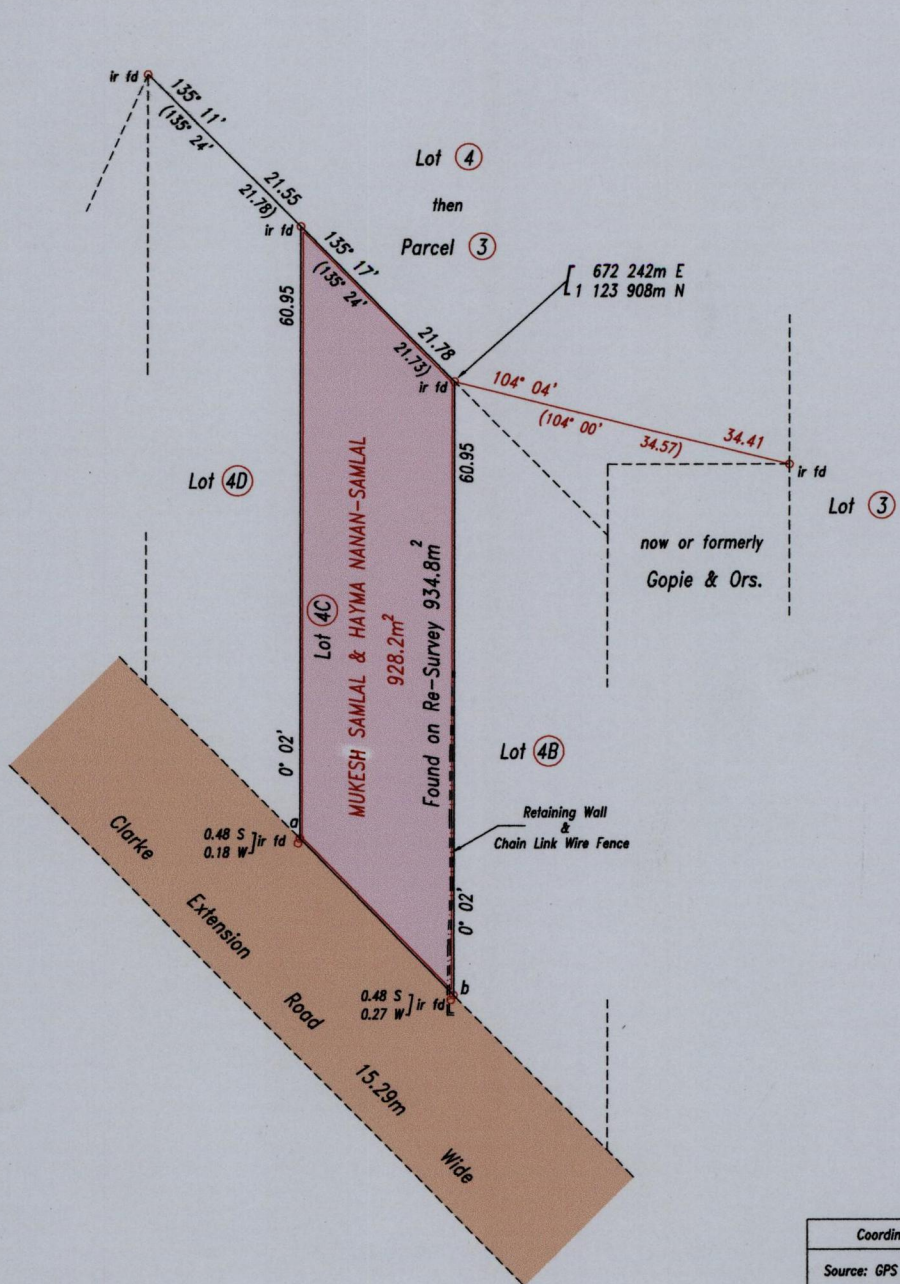


1333/85

85

R.P.O. Vol. 216 Fol. 567
C.T. Vol. 5035 Fol. 305
U.P.I.N. No.:

Cadastral Sheet G.13.K. 63F
County of St. Patrick 4/a
Ward of Siparia



Coordinate Information
Source: GPS (Hand Held)
Error Statement: +/- 5m
Datum: Naparima, UTM (Zone 20).

References: Bk.918 Fol.149
Bk.1014 Fol.160

Approved
[Signature]
Director of Surveys 2009.12.18

SCALE 1: 750

Distances are in metres

○ Denotes iron put except otherwise stated

Bearings are Cassini Grid based on Solar Observations

PLAN of a parcel of land coloured pink in the Ward of Siparia
Containing nine hundred and thirty four point eight square metres
Surveyed by me, with due authority, in October 2009

In accordance with Regulation 25(1) of the Land Surveyors' Regulations 1998, I certify that this plan is correct.

Checked by *[Signature]*
Entered

[Signature]
Trinidad & Tobago Land Surveyor 10/10/2009

