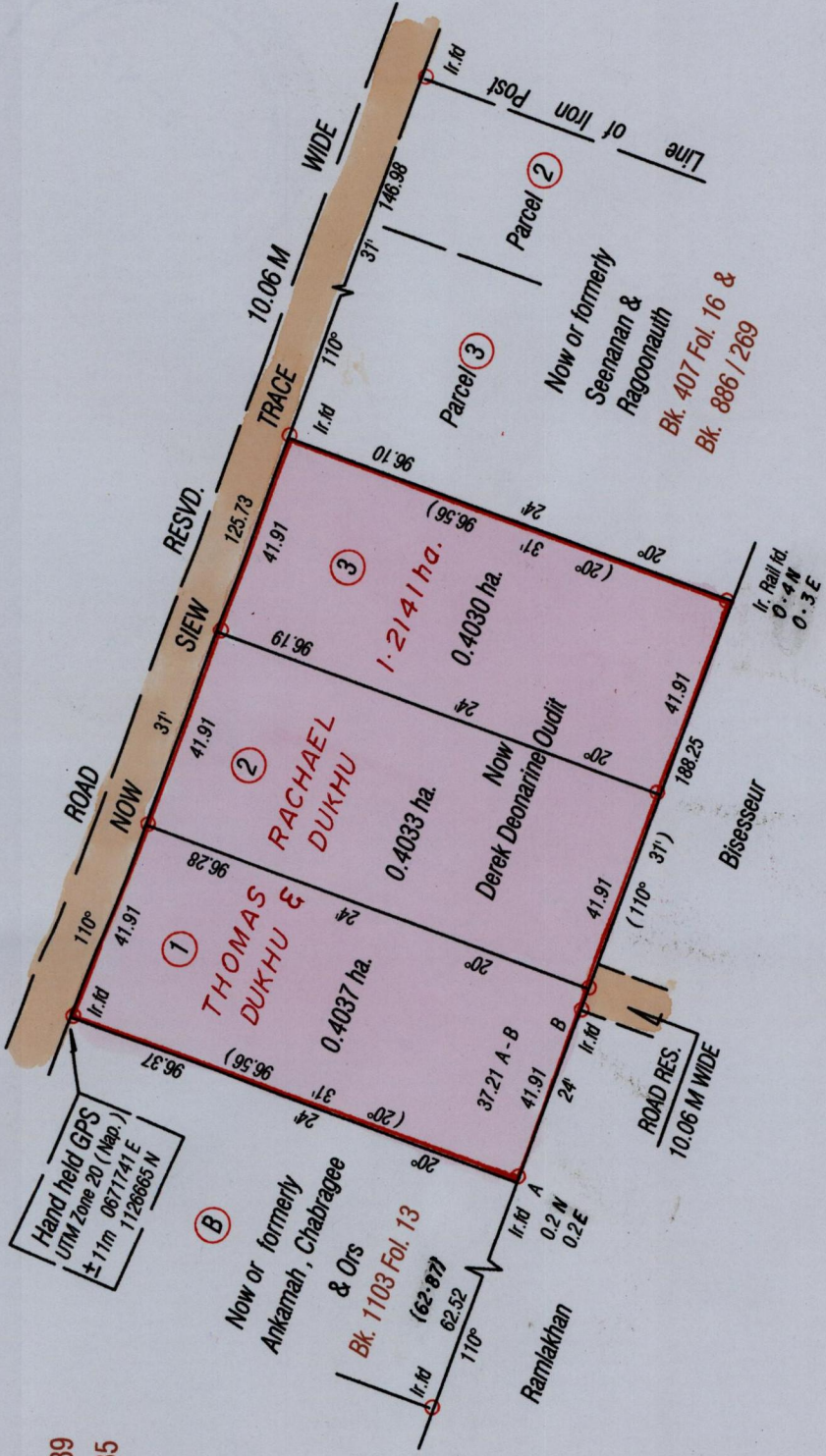
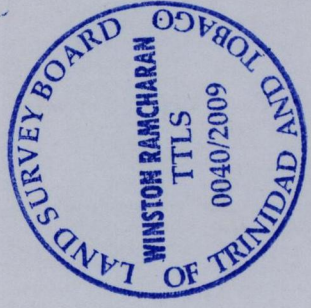
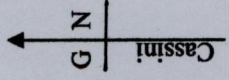


RPO . Vol 219 Fol. 589
CT. Vol. 358 Fol. 285

Bk. 714 Fol 52

Ward of Naparima
County of Victoria
Cadastral Sheet G 13 C 63 F
1/b, 2/a



Approved: *[Signature]*
9 Director of Surveys 2010.1.18

Bearings are Cassini Grid based on Solar Obs.
 ○ Denotes iron put except otherwise stated
 Note: To obtain compass bearings add/subtract minutes
 PLAN of 3 Parcels of land coloured Pink in the Ward of Naparima
 Containing one point two one zero zero hectares
 Surveyed by me, with due authority, in July 2009
 In accordance with Regulation 25 (1) of the Land Surveyors' Regulations 1998 I certify that this plan is correct.

SCALE 1: 1500
Distances are in metres

Checked by *[Signature]* 15/1/10
Entered

[Signature]
Trinidad and Tobago Land Surveyor 23rd December 2009