

1333

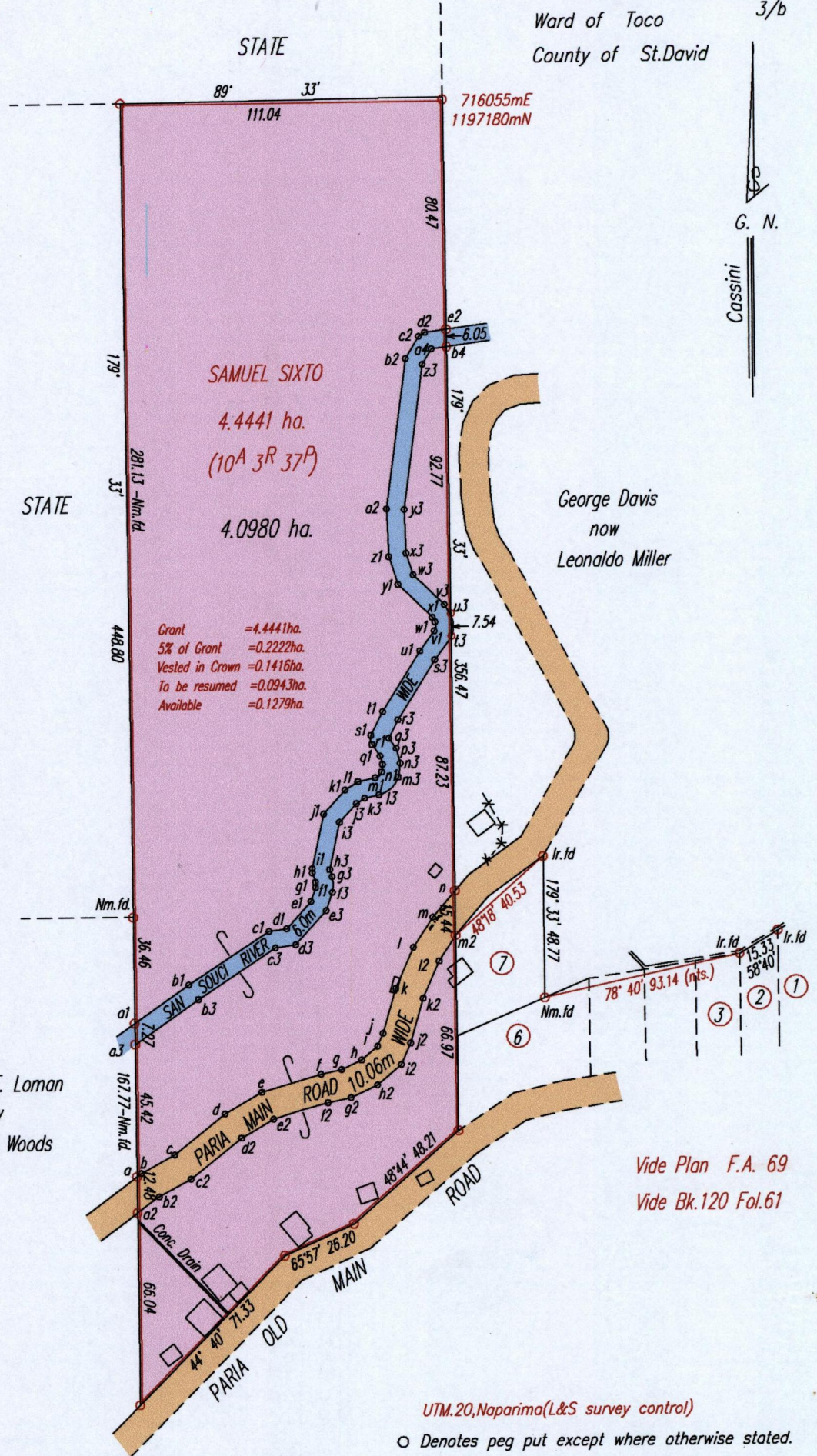
77

R.P.O. Vol. 18 Fol. 323
 C.T. Vol. 3578 Fol. 149
 U.P.R.N. No.

Cadastral Sheet (C.3.L.) 6 B
 Ward of Toco 3/b
 County of St. David

STA.	BEAR.	DIST
a-b	53° 15'	1.84
b-c	61° 28'	13.11
c-d	51° 21'	22.26
d-e	60° 18'	14.72
e-f	73° 40'	21.27
f-g	78° 23'	7.31
g-h	65° 07'	7.55
h-i	50° 37'	7.28
i-j	23° 33'	4.82
j-k	16° 23'	15.98
k-l	23° 38'	15.42
l-m	33° 15'	12.43
m-n	40° 40'	11.86

STA.	BEAR.	DIST
a2-b2	53° 15'	8.48
b2-c2	61° 28'	13.28
c2-d2	51° 21'	22.36
d2-e2	60° 18'	12.82
e2-f2	73° 40'	20.86
f2-g2	78° 23'	8.07
g2-h2	65° 07'	10.04
h2-i2	47° 39'	9.76
i2-j2	23° 33'	7.84
j2-k2	16° 23'	15.97
k2-l2	23° 38'	13.93
l2-m2	33° 15'	10.51



Albert F. Loman
 now
 Rasalina Woods

George Davis
 now
 Leonardo Miller

Vide Plan F.A. 69
 Vide Bk.120 Fol.61

UTM.20,Naparima(L&S survey control)

○ Denotes peg put except where otherwise stated.

Approved: *Hugo Somarsingh*
 Director of Surveys 2010.1.13

○ Denotes Iron put except where otherwise stated.

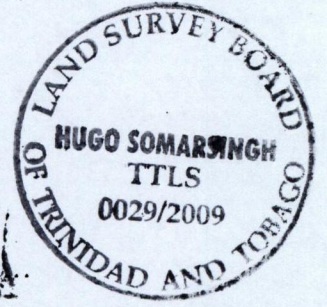
Bearings are Cassini Grid based on Solar Observations
 Plan of a Parcel of land coloured pink in the Ward of Toco
 Containing four point zero nine eight zero hectares
 Surveyed by me, with due authority in June 2008

In accordance with regulation 25 (1) of the Land Surveyors' Regulations 1998,
 I certify that this plan is correct.

Checked by: *Hugo Somarsingh*

Entered on: *23rd October* 2009
 Trinidad and Tobago Land Surveyor

SCALE 1/ 2000
 Distances are in metres



P.T.O.

e2	6.05	Ir put
7.52	179'33"	4
d2	82'23"	5.35
d2		82'23"
2.50		4
c2	57'42"	4
c2		6.07
8.89		23
b2	31'13"	23
b2		50.57
52.32		07'33"
o2	07'33"	y3
o2		15.14
16.47		358'01"
z2	358'01"	x3
z2		7.94
10.26	WIDE	342'22"
y2	342'22"	w3
y2	6.00m	15.55
16.30		31'412"
x1	314'12"	3
x1		4.34
1.87		328'32"
w1	328'32"	3
w1		7.54
3.12	RIVER	359'33"
v1	05'01"	3
v1		10.13
8.48	SOUCI	36'28"
u1	36'28"	3
u1		23.48
24.47		33'05"
t1	31'43"	3
t1		7.08
9.16	SAN	26'58"
s1	26'58"	3
s1		4.30
3.23		324'35"
r1	354'17"	q3
r1		4.30
4.88		324'35"
q1	324'35"	p3
q1		5.33
3.00		345'05"
p1	345'05"	3
p1		6.05
2.61		08'37"
n1	08'37"	m3
n1		6.65
3.03		48'26"
m1	48'26"	l3
m1		6.68
6.09		78'09"
l1	78'09"	k3
l1		3.41
5.21		57'43"
k1	57'43"	i3
k1		8.64
11.06		42'35"
j1	42'35"	i3
j1		16.51
18.98		12'25"
i1	12'25"	h3
i1		3.56
1.57		342'03"
h1	357'14"	g3
h1		3.78
3.45		359'27"
g1	342'03"	f3
g1		7.38
1.79		19'36"
f1	359'27"	e3
f1		15.77
5.13		42'00"
e1	19'36"	d3
e1		7.14
12.41		81'47"
d1	42'00"	c3
d1		31.79
6.29		56'52"
c1	81'47"	b3
c1		26.74
33.21		55'07"
b1	56'52"	a3
b1		7.27
22.63		179'33"
o	55'07"	Ir put
o		4
a1	7.27	179'33"

