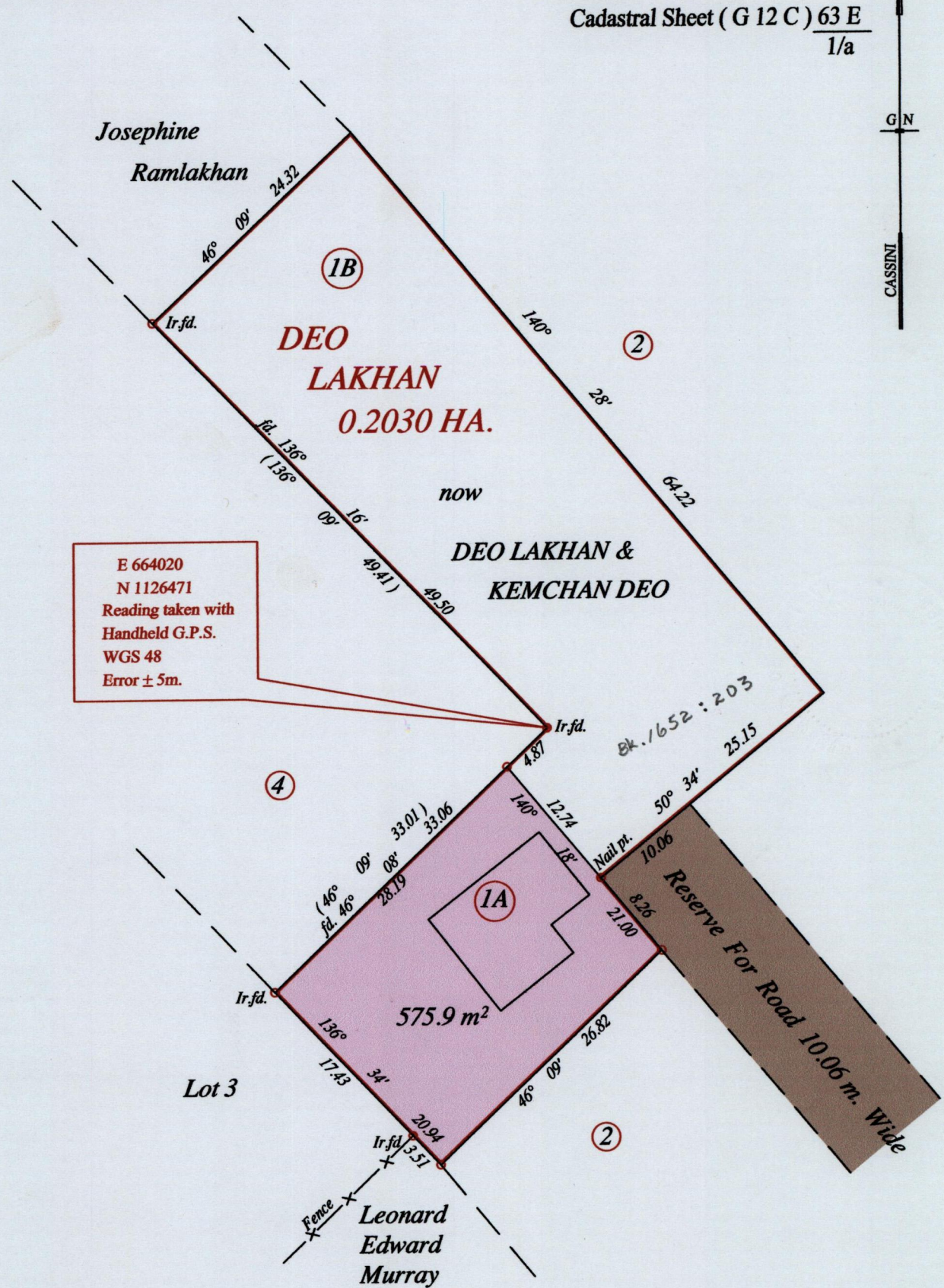


R.P.O. Vol. Fol.
C.T. Vol. 1789 Fol. 413

Ward of Siparia
County of St. Patrick
Cadastral Sheet (G 12 C) $\frac{63 E}{1/a}$



Approved *[Signature]*
Director of Surveys 2009-12-16

Vide Bk. 1196 Fol. 630
Vide Bk. 960 Fol. 222
Vide Bk. 1124 Fol. 176

o Denotes Iron put except stated otherwise. SCALE : 1:500
Note: Bearings are cassini grid based on solar observations Distances are in metres

PLAN of a Parcel of land coloured pink in the Ward of Siparia
Containing five hundred and seventy five point nine square metres
Surveyed by me, with due authority, in February 2008
In accordance with Regulation 25 (1) of the Land Surveyors' Regulations 1998,
I certify that this plan is correct.

Checked by *[Signature]* 20/11/09
Entered on Trinidad & Tobago Land Surveyor *[Signature]* 12th December 2008

