

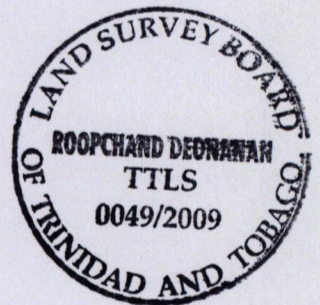
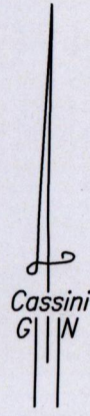
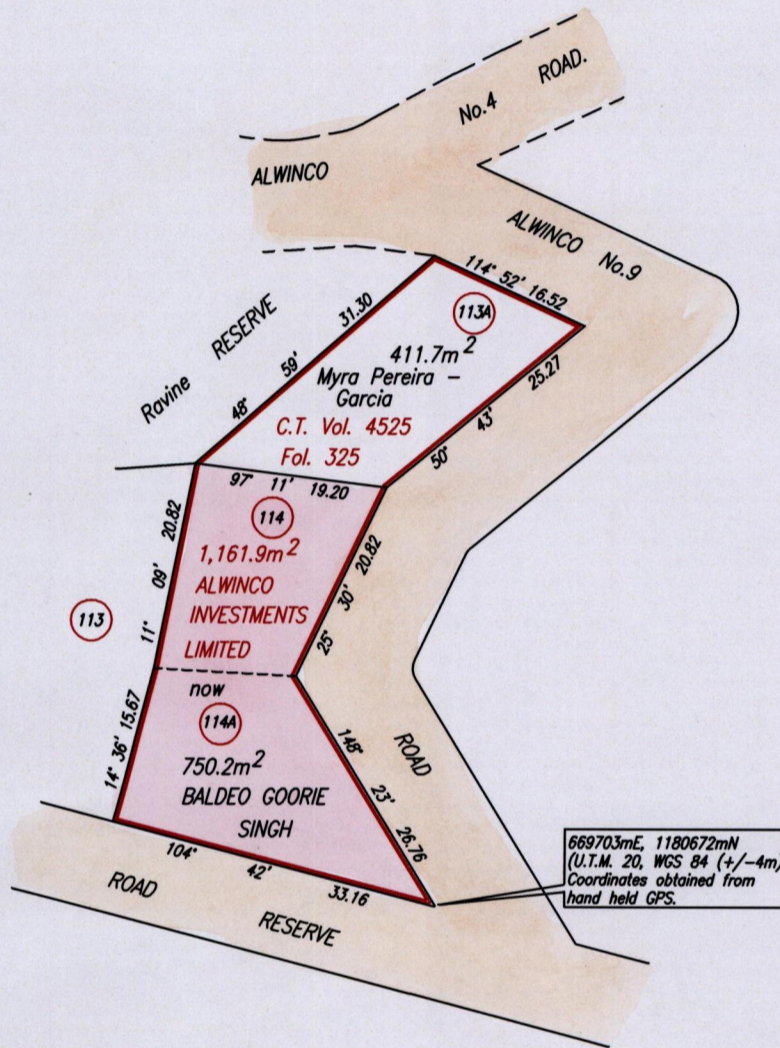
1333

65

R.P.O. Vol. 7 Fol. 127
C.T. Vol. 2276 Fol. 163
Plan filed in Vol. 4525 fol. 317

Remaining Portion

Cadastral Sheet B.17.B. & F. $\frac{13F}{3/a}$
Ward of St.Anns
County of St.George
La Canoa
Santa Cruz



Approved *[Signature]*
Director of Surveys 2009.12.16

SCALE 1:750
Distances are in Metres

This is a true copy of a diagram of a Parcel of land in the Ward of St.Anns
Containing one thousand, one hundred and sixty one point nine square metres originally transferred to
ALWINCO INVESTMENTS LIMITED showing a portion coloured pink and
Containing seven hundred and fifty point two square metres being the remainder after a transfer
of a portion of the land

In accordance with Regulation 25(1) of the Land Surveyors' Regulations 1998,
I certify that this plan is correct.

Checked by *[Signature]* 25/11/09

Entered Trinidad & Tobago Land Surveyor *[Signature]* 25th August 2009
PATH = EV700 E:\Drawings09\BCSingh(Rem.P.)dwg.