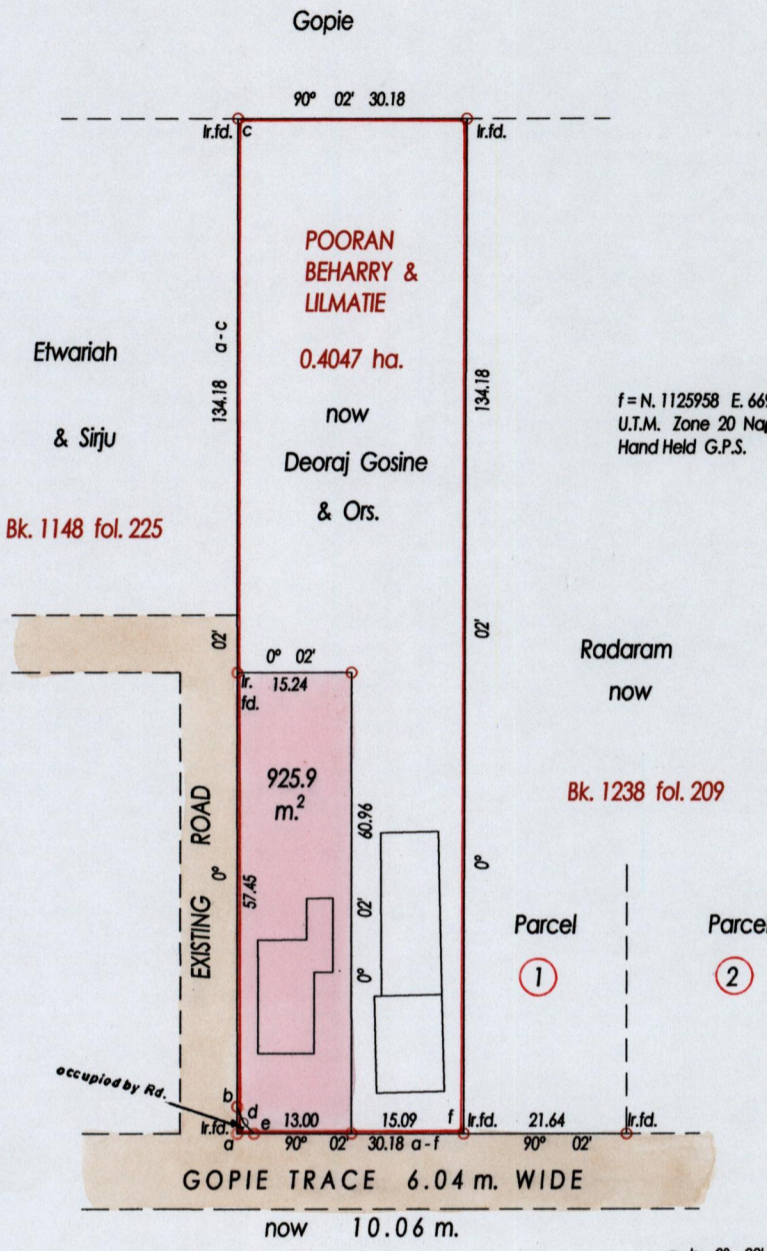


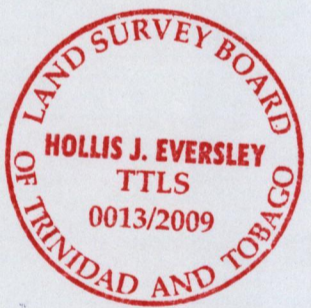
R. P. O. Vol. 64 fol. 649  
C. T. Vol. 1365 fol. 273  
Bk. 920 fol. 110

Ward of Siparia.  
County of St. Patrick  
Cadastral Sheet G. 13 F. 63 F.  
1/c



f = N. 1125958 E. 669128  
U.T.M. Zone 20 Naparima +/- 5.00 m.  
Hand Held G.P.S.

a-b 0° 02' 3.51  
b-d 157° 53' 2.23  
d-e 136° 10' 2.01  
e-a 270° 02' 2.24



Approved *[Signature]*  
Director of Surveys  
75889.10.12

o Denotes Iron Put Except Stated Otherwise

SCALE 1 : 1000

Bearings are Cassini Grid based on Solar Observations Distances are in Metres  
PLAN of a Parcel of land coloured pink in the Ward of Siparia  
Containing nine hundred and twenty five point nine sq. metres  
Surveyed by me, with due authority in, Nov. 2008

In accordance with Regulation 25 (1) of the Land Surveyors' Regulations 1998,  
I certify that this plan is correct.

Entered on *11/10/06* *[Signature]*

Checked by ..... Trinidad & Tobago Land Surveyor *[Signature]* ..... 2009