

R.P.O. Vol. 99

Fol. 279

Cadastral Sheet E.21.M & N, 55B  
3/a

C.T. Vol. 2446

Fol. 243

Ward of Charuma

County of Nariva

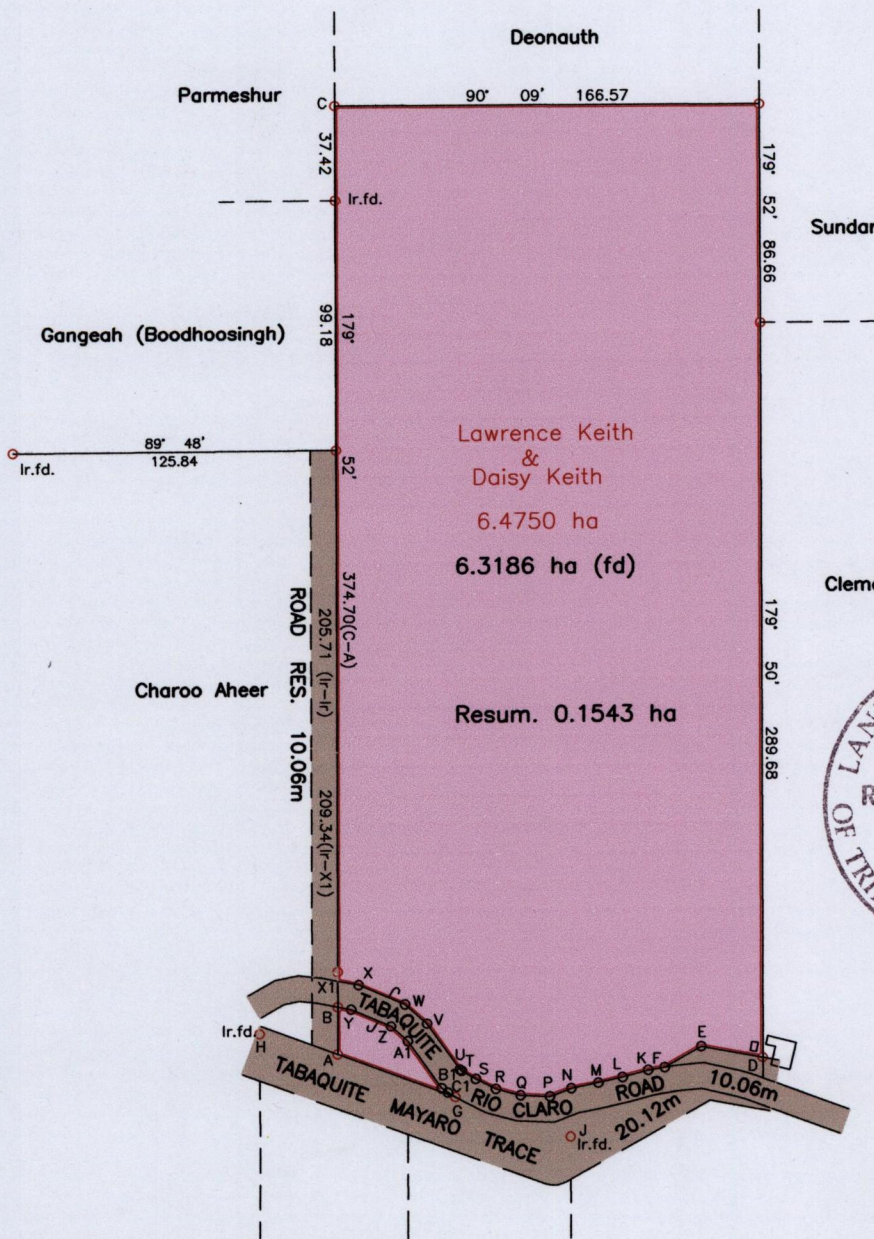
Refs:L&S BK589 Fol.191

BK338 Fol.37

BK613 Fol.184

BK839 Fol.158

Plan CM 56



A-B	359° 52'	18.51	D-E	280° 23'	24.64
B-Y	101° 03'	5.33	E-F	240° 36'	16.46
Y-Z	113° 07'	16.97	F-K	260° 43'	6.58
Z-A1	131° 25'	8.75	K-L	255° 02'	10.42
A1-B1	144° 22'	22.80	L-M	257° 15'	9.78
B1-C1	124° 47'	3.02	M-N	258° 26'	10.76
C1-G	119° 55'	3.42	N-P	249° 25'	8.99
G-A	290° 10'	49.10	P-O	272° 38'	11.49
H-J	108° 31'	128.37	Q-R	284° 43'	10.07
H-A	104° 50'	31.48	R-S	296° 48'	8.82
			S-T	299° 55'	6.37
			T-U	304° 47'	0.86
			U-V	324° 22'	22.20
			V-W	311° 25'	11.51
			W-X	293° 07'	19.66
			X-X1	281° 03'	8.38
			B-X1	359° 52'	10.25

Approved...  
Director of Surveys 2009.12.16

SCALE 1/3000

o Denotes Iron put except otherwise stated

Distances are in Metres

Bearings are Cassini Grid based on Solar Observations

Plan of a Parcel of land coloured pink in the Ward of Charuma

Containing six point three one eight six hectares

Surveyed by me with due authority, on October 10, 2006

In accordance with Regulation 25 (1) of the Land Surveyors' Regulations 1998,

I certify that this plan is correct.

Checked by...  
Rawle Derrick

Entered... Trinidad & Tobago Land Surveyor September 28, 2009