

RPO Vol. 8 Fol. 294
CT. Vol. 1298 Fol. 281

Coordinates

Iron fd. A : N 1127433 E 670584

Error Statement : ±4m

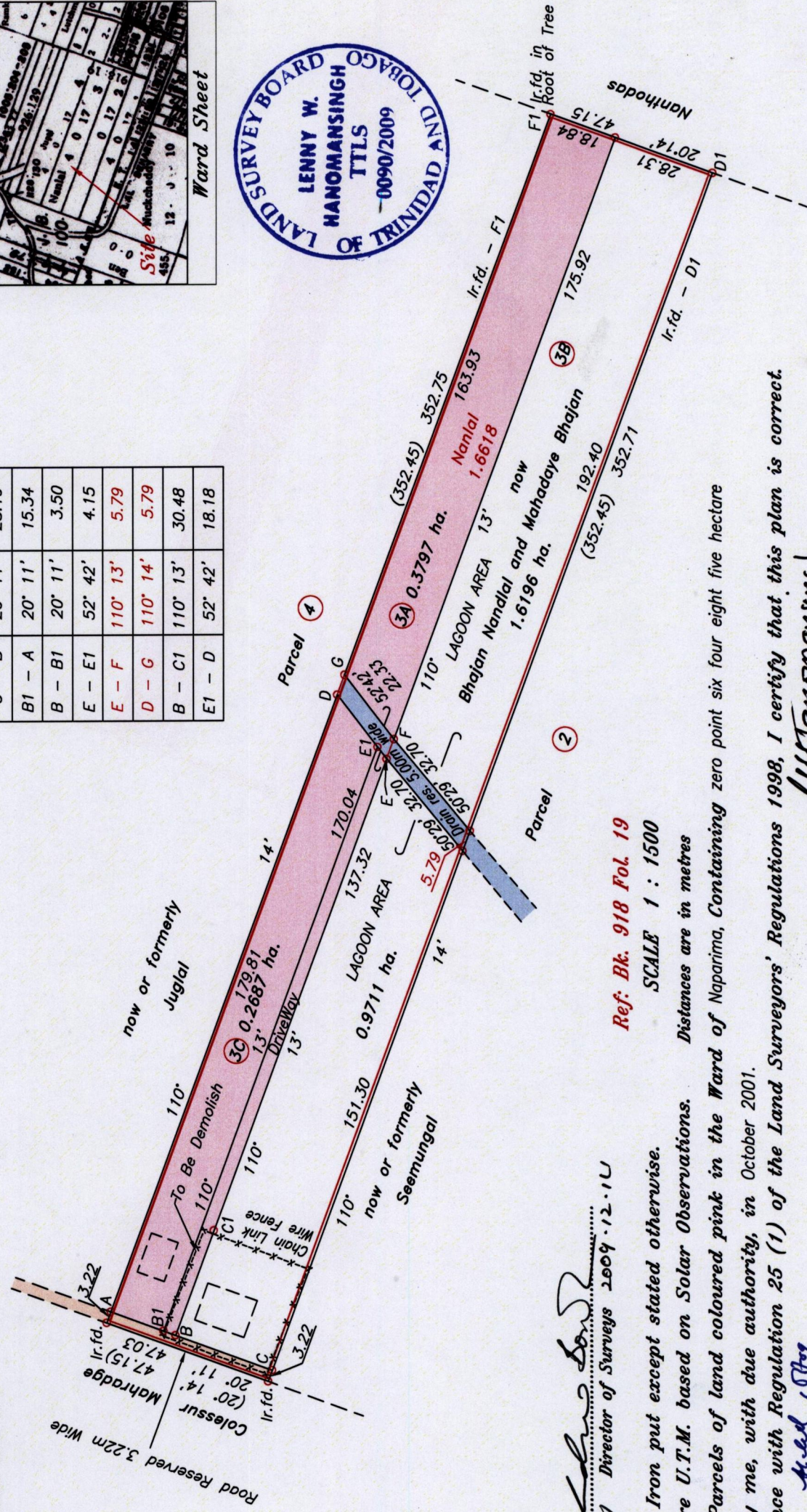
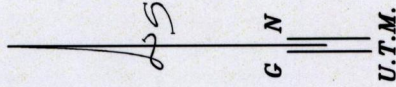
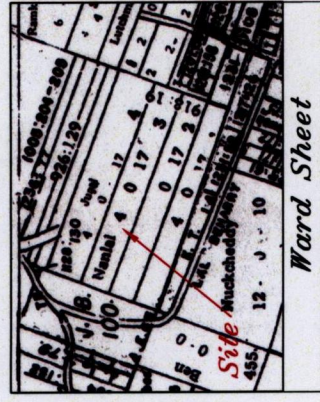
Datum Definition : U.T.M. Zone 20 Naparima

Source : Magellan Hand Held GPS

Ward of Naparima
County of Victoria
Cadastral Sheet (G.13.C), 63F
1/b

Parcel Address: Singh Drive, Debe.

Sta.-Sta.	Bearing	Distance
C - B	20° 11'	28.19
B1 - A	20° 11'	15.34
B - B1	20° 11'	3.50
E - E1	52° 42'	4.15
E - F	110° 13'	5.79
D - G	110° 14'	5.79
B - C1	110° 13'	30.48
E1 - D	52° 42'	18.18



Approved
Director of Surveys 2009.12.11

○ Denotes Iron put except stated otherwise.

Bearings are U.T.M. based on Solar Observations.

Distances are in metres

Plan of 2 Parcels of land coloured pink in the Ward of Naparima, Containing zero point six four eight five hectare

Surveyed by me, with due authority, in October 2001.

In accordance with Regulation 25 (1) of the Land Surveyors' Regulations 1998, I certify that this plan is correct.

Checked by
Ked 10/09

Lenny W. Hanomansingh

Trinidad & Tobago Land Surveyor.....27607/2009

Ref: Bk. 918 Fol. 19
SCALE 1 : 1500

1333