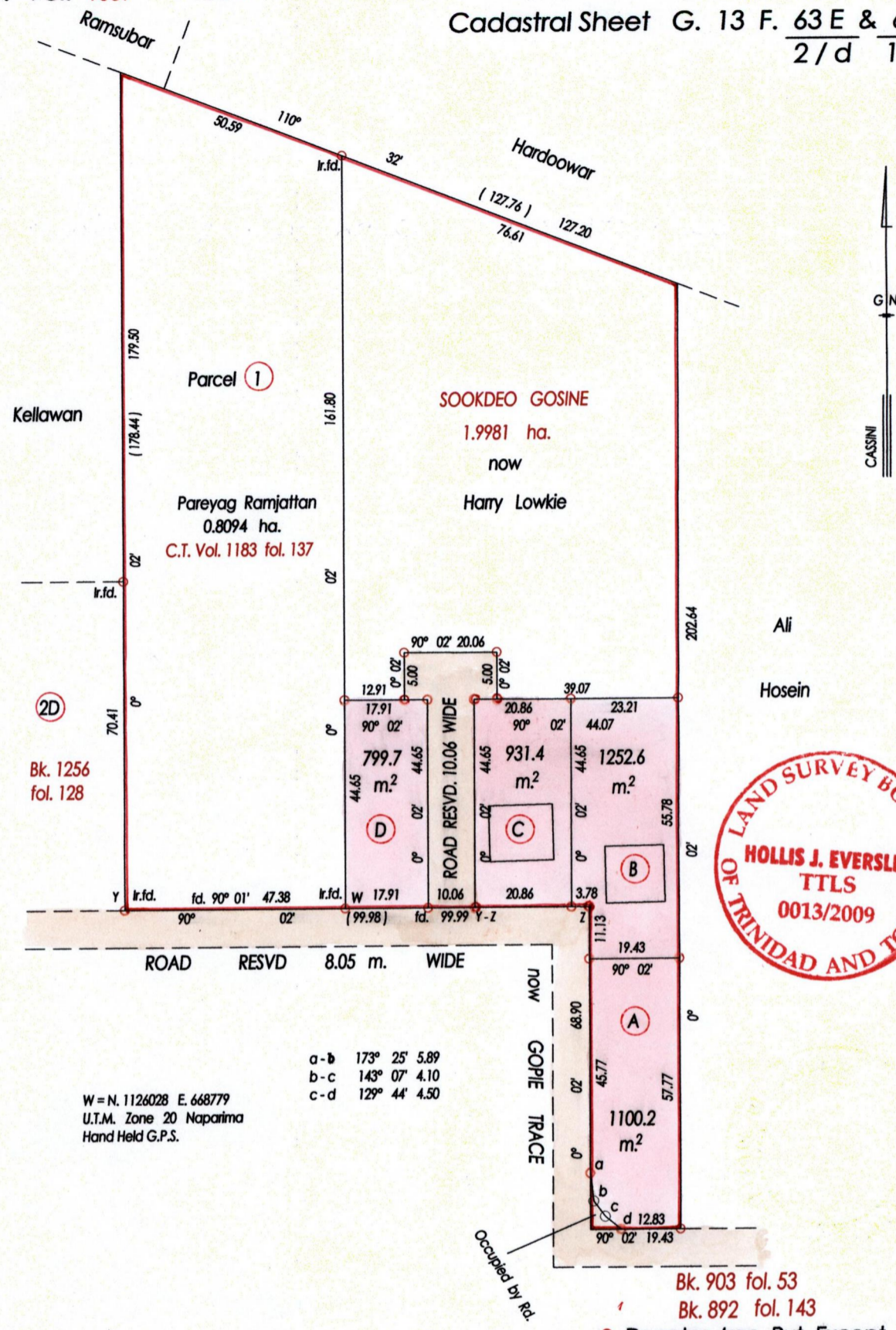
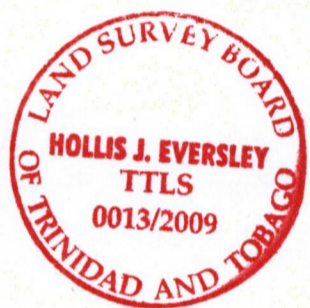


R. P. O. Vol. 120 fol. 467  
C. T. Vol. 1059 fol. 7

Ward of Siparia  
County of St. Patrick  
Cadastral Sheet G. 13 F. 63 E & 63 F  
2/d 1/c



2D  
Bk. 1256  
fol. 128



W = N. 1126028 E. 668779  
U.T.M. Zone 20 Naparima  
Hand Held G.P.S.

a-b 173° 25' 5.89  
b-c 143° 07' 4.10  
c-d 129° 44' 4.50

Bk. 903 fol. 53  
Bk. 892 fol. 143  
o Denotes Iron Put Except Stated Otherwise

Approved *[Signature]*  
9 Director of Surveys 2009.12.14

SCALE 1 : 1250

Bearings are Cassini Grid based on Solar Observations Distances are in Metres  
PLAN of 4 Parcels of land coloured pink in the Ward of Siparia  
Containing together four thousand and eighty three point nine sq. metres  
Surveyed by me, with due authority in, August 2008  
In accordance with Regulation 25 (1) of the Land Surveyors' Regulations 1998,  
I certify that this plan is correct.

Entered on .....  
Checked by *[Signature]* Trinidad & Tobago Land Surveyor ..... 2009

LOT #	C.T. Vol & Folio	Names.
A	5577 fol. 231	Sookoorali & Shairon Hosein
B		
C		
D	5577 fol 241	Sookoorali & Shairon Hosein

