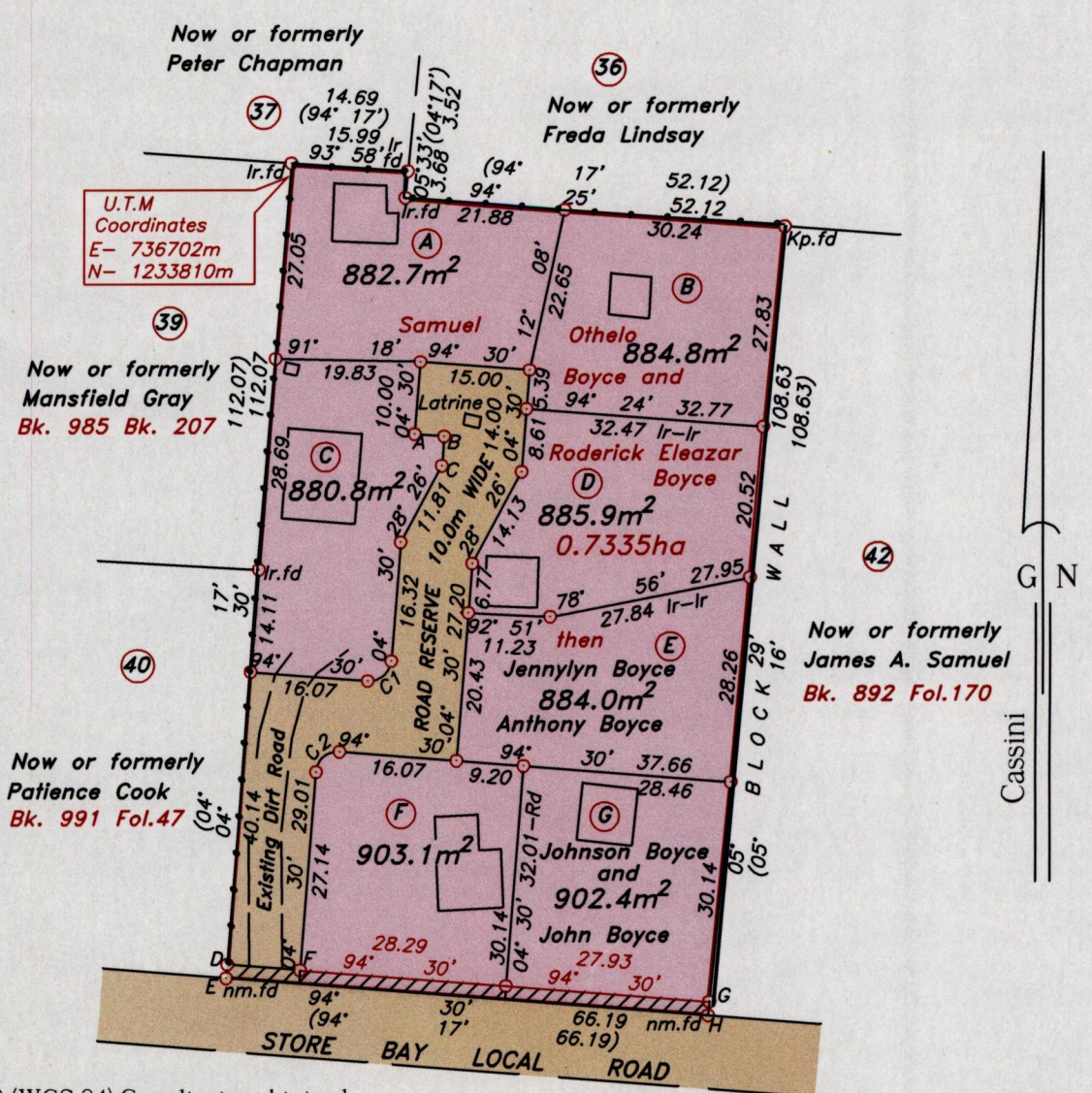
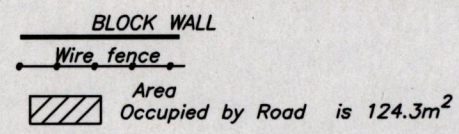


U.P.R.N.....
 R.P.O Vol. Fol.
 C.T Vol.982 Fol431

Cadastral Sheet I.12.A $\frac{1E}{5d/2}$
 Ward of Tobago
 Parish of St. Patrick
BON ACCORD



Note- UTM Zone 20 (WGS 84) Coordinates obtained from hand held GPS receiver
 ± 5.00m

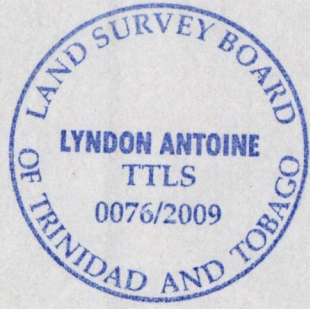


LEGEND

CURVE	DELTA ANGLE	CHORD DIRECTION	RADIUS	CHORD LENGTH
C2	90° 00'	49° 30'	3.00	4.24
C1	90° 00'	229° 30'	3.00	4.24

LINE	DIRECTION	DISTANCE
A-B	94° 30'	4.06
B-C	184° 30'	4.00
D-E	184° 33'	1.88
D-F	94° 30'	10.00
G-H	185° 29'	1.88

Approved *[Signature]*
 Director of Surveys 2009.12.11



○ Denotes iron put, except otherwise stated.

SCALE 1:1000

Bearings are grid based on solar observations

Distances are in metres

PLAN of 7 parcels of land coloured pink in the Ward of Tobago
 Containing together six thousand two hundred and twenty three point seven square metres.
 Surveyed by me, with due authority on 11th May 2007.

In accordance with Regulation 25 (1) of the Land Surveyors' Regulations 1998, I certify that this plan is correct.

Checked by *[Signature]* 22/10/09
 Entered.....

[Signature]
 15th October

Trinidad & Tobago Land Surveyor..... 2009