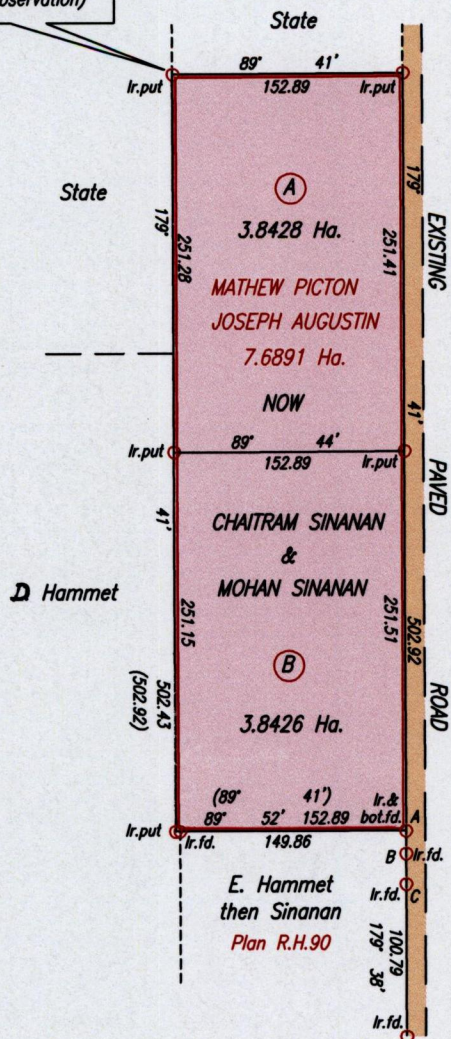


R.P.O. Vol. 14 Fol. 353
C.T. Vol. 50 Fol. 71
Vide Bk168 Fol.272

Ward of Manzanilla
County of St. Andrew
Cadastral Sheet C.22.L. 26A
3/c
Vega de Oropouche

709723 mE, 1173356 mN
U.T.M. 20, Nap. (+/- 5.0m.)
G.P.S. (Direct Observation)



A-B 179° 38' 15.24
B-C 179° 38' 20.30

SCALE 1/5000
Distances are in Metres.

Approved *[Signature]*
Director of Surveys 2009.12.11

Bearings are Cassini Grid based on solar Observations

PLAN of two Parcels of land coloured pink in the Ward of Manzanilla
Containing together seven point six eight five four hectares
Surveyed by me, with due authority, in July 2008.

In accordance with Regulation 25 (1) of The Land Surveyors' Regulations 1998.

I certify that this plan is correct.

Checked by *[Signature]*

[Signature]

Entered on Trinidad & Tobago Land Surveyor. 15/5/2009