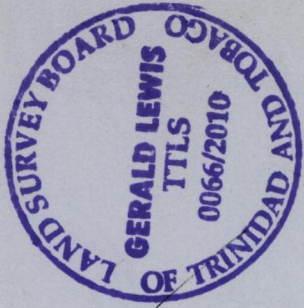
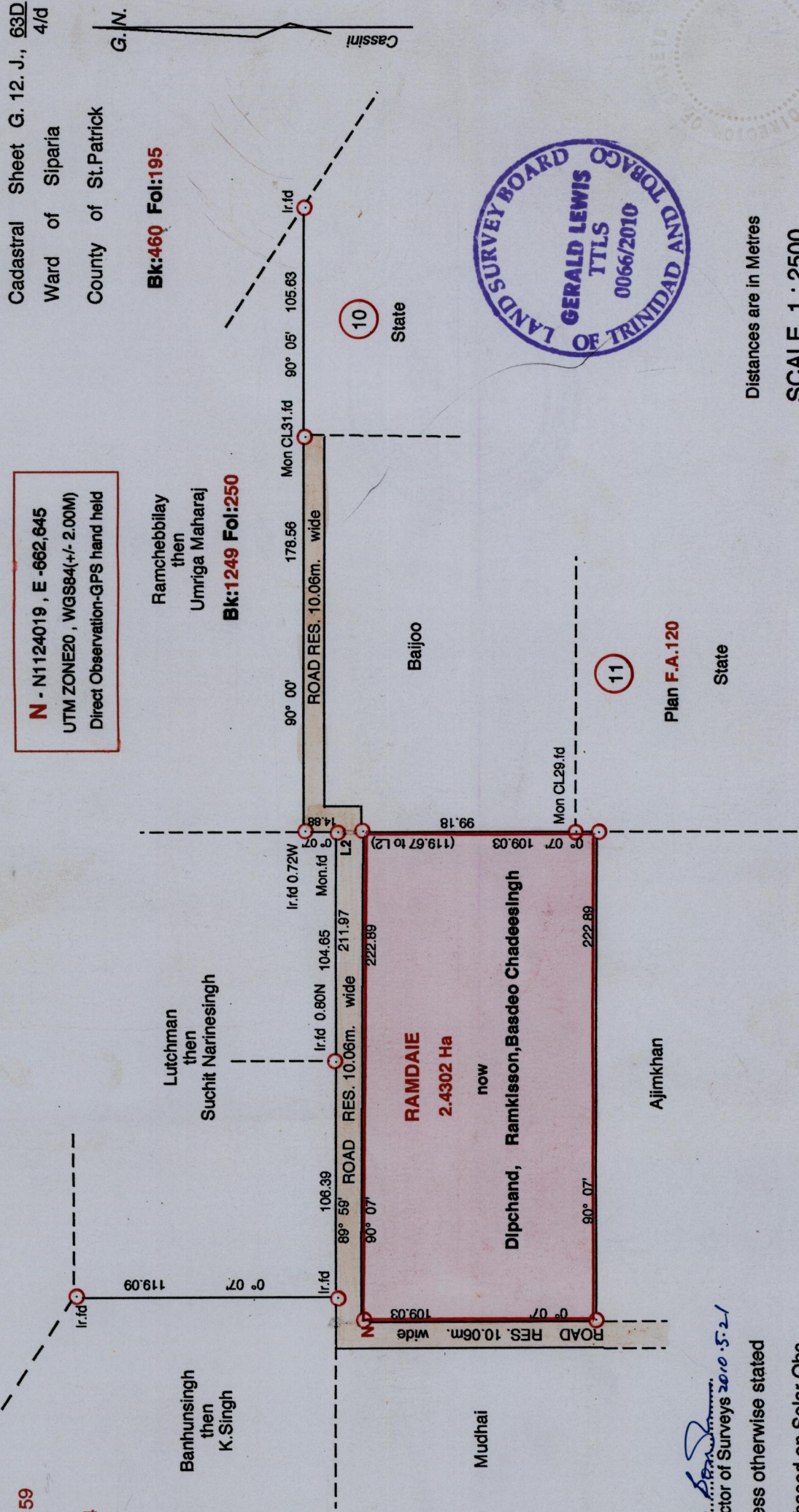


Cadastral Sheet G. 12. J., 63D  
4/d  
Ward of Siparia  
County of St. Patrick

**N** - N1124019, E -662,645  
UTM ZONE20, WGS84(+/- 2.00M)  
Direct Observation-GPS hand held

**Bk:460 Fol:195**  
**Bk:1249 Fol:250**



Distances are in Metres  
SCALE 1 : 2500

R.P.O. Vol. 91 Fol. 159  
C.T. Vol. 173 Fol. 4  
U.P.R.N. No.

Approved *[Signature]*  
Director of Surveys 2010.5.21

- Denotes Iron Put unless otherwise stated
- Bearings are Cassini Grid based on Solar Obs.
- PLAN of a Parcel of land coloured pink in the Ward of Siparia
- Containing two point four three zero two hectares
- Surveyed by me, with due authority, in March 2009
- In accordance with Regulation 25(1) of the Land Surveyors' Regulations 1998, I certify that this plan is correct
- Checked by *[Signature]*
- Entered by *[Signature]*

*[Signature]*

Trinidad and Tobago Land Surveyor 05/09/2010