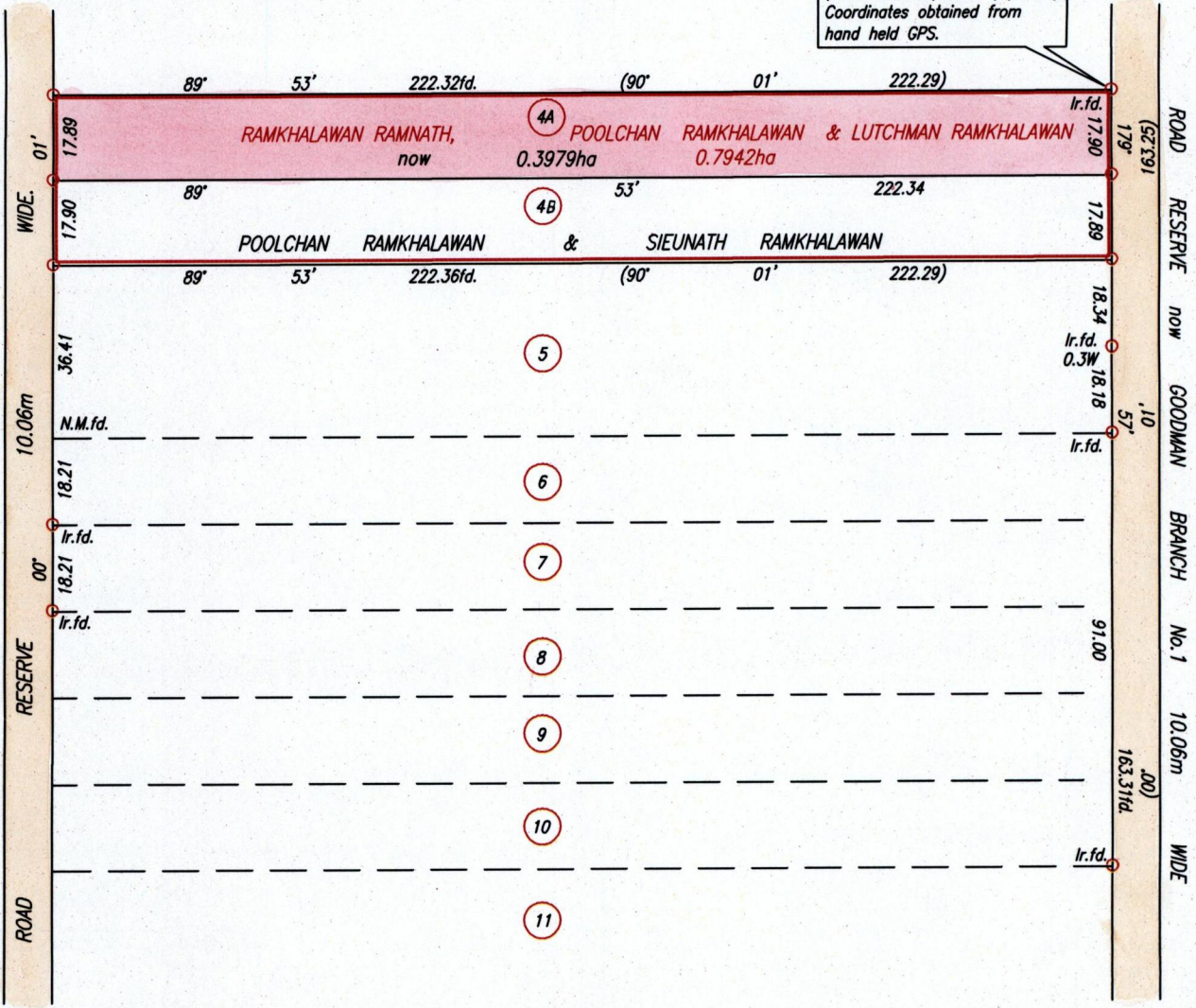


Cadastral Sheet G.18.C. & D. 73C  
Ward of Siparia  
County of St.Patrick.  
Rock Road

R.P.O. Vol. 207 Fol. 33  
C.T. Vol. 1975 Fol. 63  
Vide Plan E.G.105  
C-T Vol 5399 Fol 7



672515mE, 1121635mN  
(U.T.M. 20, Naparima (+/-8m))  
Coordinates obtained from  
hand held GPS.



Approved *[Signature]*  
Director of Surveys 2010-5-21

SCALE 1:1500  
Distances are in Metres

○ Denotes Iron put except otherwise stated.  
Bearings are Cassini Grid based on Solar Observations.  
PLAN of a Parcel of land coloured pink in the Ward of Siparia  
Containing zero point three nine seven nine hectare  
Surveyed by me, with due authority, in June, 2009  
In accordance with Regulation 25(1) of the Land Surveyors' Regulations 1998,  
I certify that this plan is correct.

Checked by *[Signature]*



Entered . . . . . Trinidad & Tobago Land Surveyor 22nd March . . . . . 2010



orig: plan E.G. 105

LOT #	C.T. Vol & Fol	Names.
4A	5399 fol 11	Poolchan Ramkhalawan
4B		
5		

