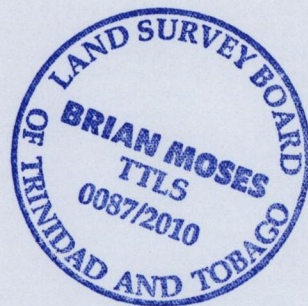
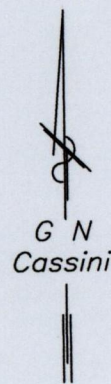
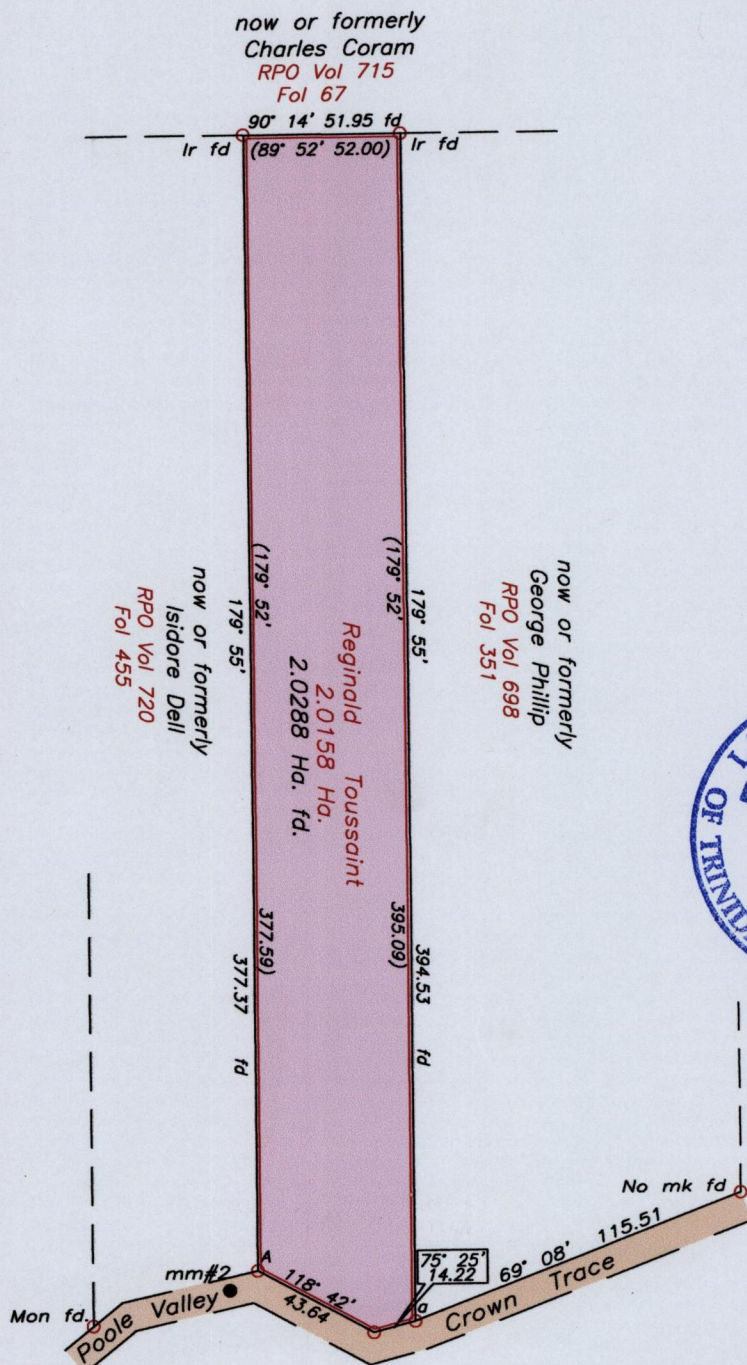
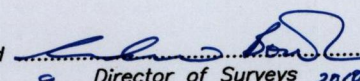


Vesting order



Ref:  
 Bk. 668 Fol. 210  
 Bk. 667 Fol. 8  
 Bk. 648 Fol. 229  
 Bk. 648 Fol. 238  
 Mon fd - A 71° 58' 57.21  
 mm#2 - A 55° 09' 11.28

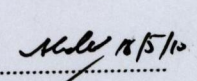
a = N 1136955  
 E 698085  
 Derived From Hand-Held GPS (+/-5 m)  
 UTM Zone 20 Naparima Co-ordinates

Approved   
 Director of Surveys 2010.5.20

SCALE 1:2500  
 Distances are in METRES

o Denotes Iron put unless otherwise stated  
 Bearings are Cassini Grid based on Solar observations

PLAN of a Parcel of land coloured pink in the Ward of Charuma  
 Containing two point zero two eight eight Hectares  
 Surveyed by me, with due authority, in January, 2010 for Rosales Toussaint  
 In accordance with Regulation 25 (1) of the Land Surveyors' Regulations 1998,  
 I certify that this Plan is correct.

Checked by   
 Entered on .....  
 Brian Moses  
 6th April 2010  
 Trinidad & Tobago Land Surveyor