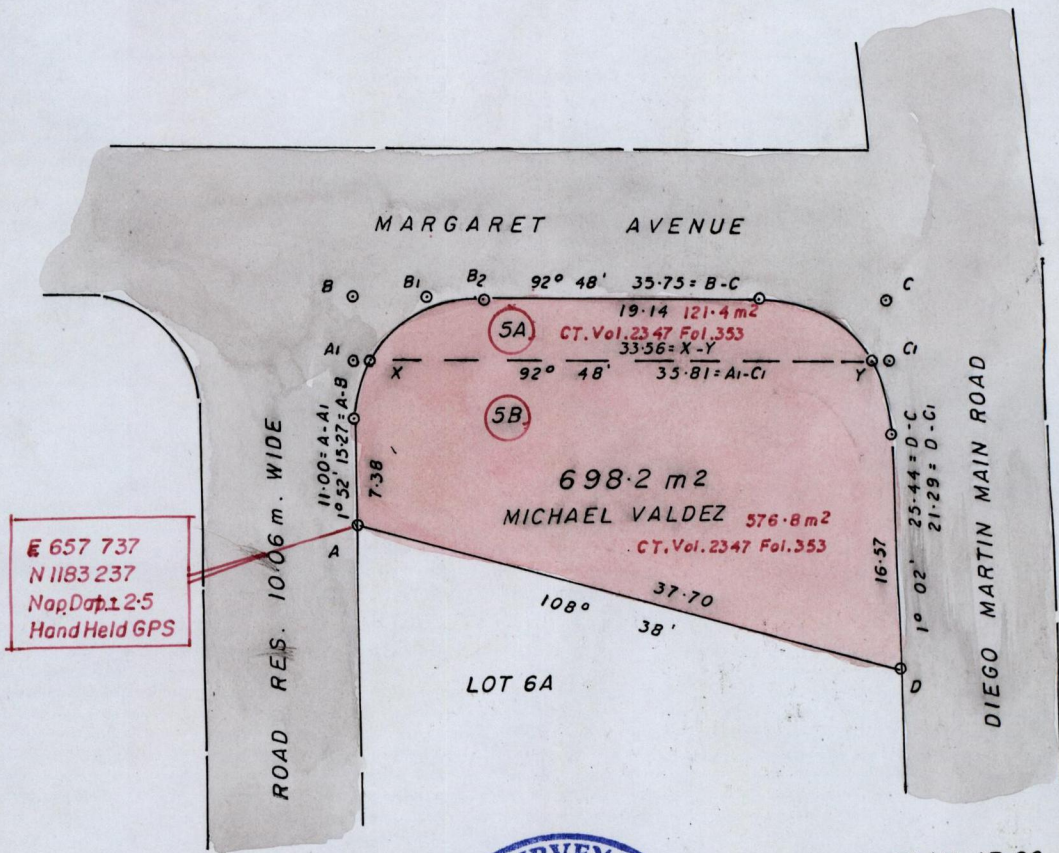
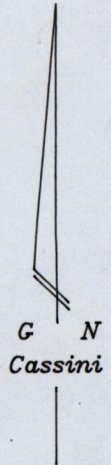


Ward of Diego Martin

County of St. George

Cadastral Sheet A-14-P. $\frac{13D B 23A}{1/a}$

CONSOLIDATED PLAN



E 657 737
N 1183 237
NapDat 1.2.5
Hand Held GPS



c.f. L&S. PLAN JB 96

- B - B1 92° 48' 4.51
- B1 - B2 92° 48' 3.23
- A1 - X 92° 48' 0.91
- Y - C1 92° 48' 1.34

Approved
[Signature]
Director of Surveys 2010.5.13

SCALE : 1/500

Note: To obtain compass bearings subtract 4 minutes.

Distances are in metres

PLAN of a Parcel of land coloured pink in the Ward of Diego Martin
 Containing six hundred and ninety eight point two square metres
 Prepared by me with due authority in September 2009
 In accordance with Reg. 25(1) of the Land Surveyors' Regulations 1998,
 I certify that this plan is correct.

Checked by *[Signature]*

[Signature]

Entered.....

Trinidad & Tobago Land Surveyor..... 2010.5.13