

1333 1333/200

2000

VESTING ORDER

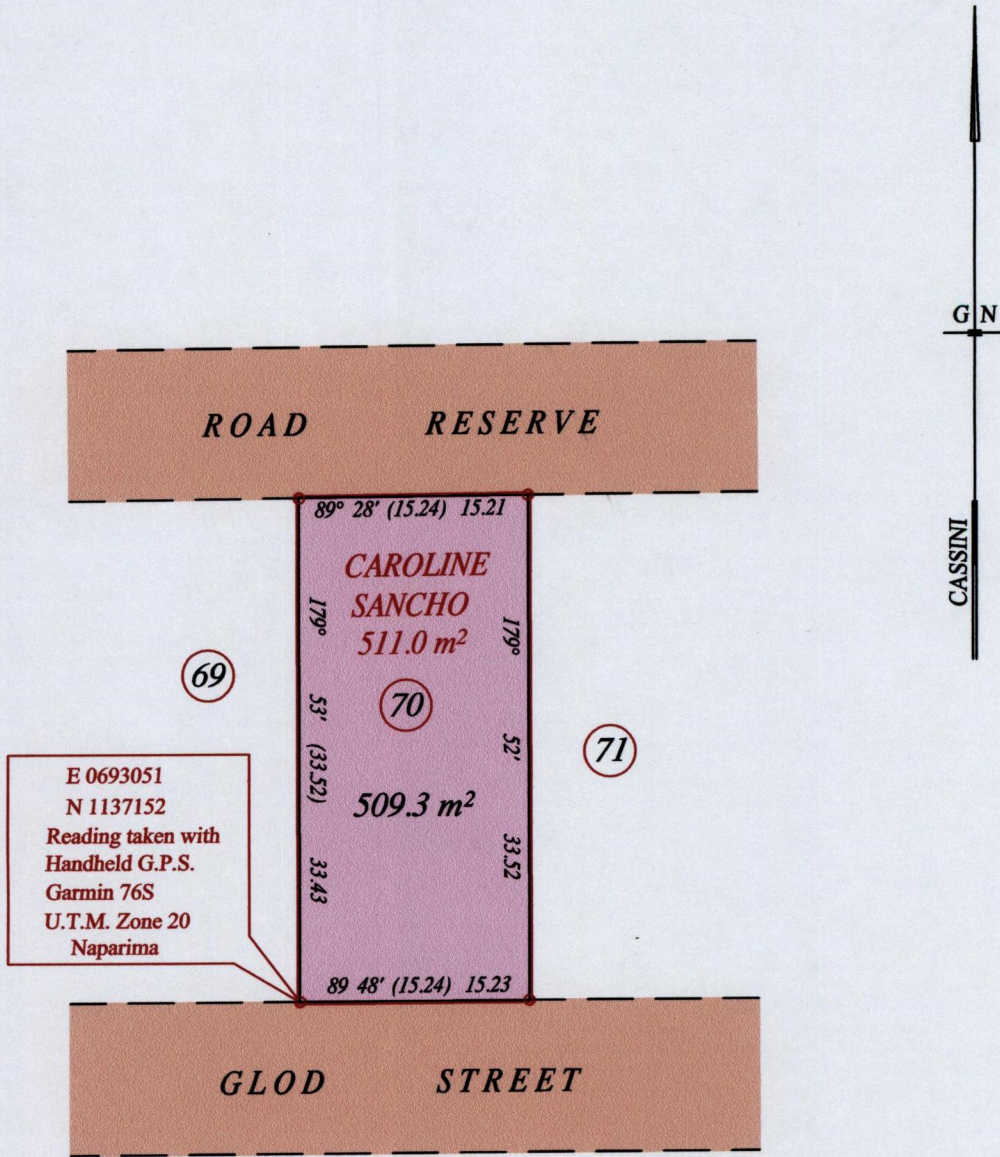
R.P.O. Vol. 169 Fol. 543

C.T. Vol. Fol.

Ward of Charuma

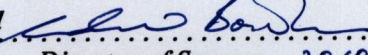
County of Nariva

Cadastral Sheet (H.I.G) 55.D.
1/d



Vide Plan B. E. 9.

Vide Bk. 312 fol. 198

Approved 
Director of Surveys 2010.4.30

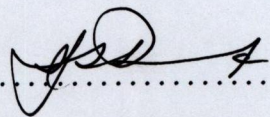
SCALE : 1:500

o Denotes Iron found except stated otherwise.

Distances are in metres

Note: Bearings are cassini grid based on solar observations
PLAN of a Parcel of land coloured pink in the Ward of Charuma
Containing five hundred and nine point three square metres
Surveyed by me, with due authority, in December 2008 for Molina Chandler
In accordance with Regulation 25 (1) of the Land Surveyors' Regulations 1998,
I certify that this plan is correct.



Checked by  28/4/10

Entered on Trinidad & Tobago Land Surveyor 27.04.2010