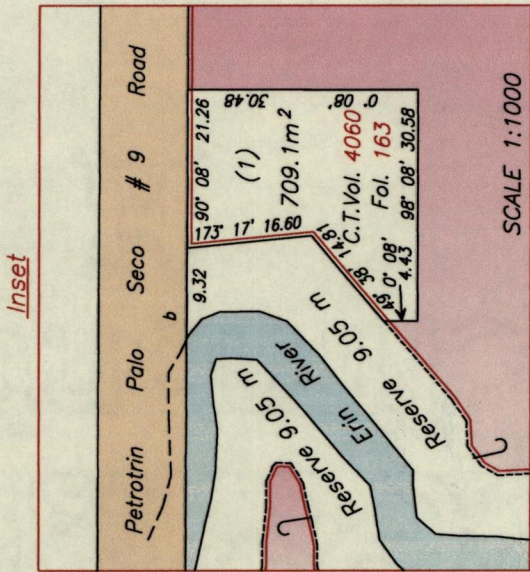


R.P.O. Vol. 182 Fol. 179  
 C.T. Vol. Fol.

Cadastral Sheet G.16.N.  $\frac{Z2C}{4/c}$   
 Ward of Erin  
 County of St. Patrick

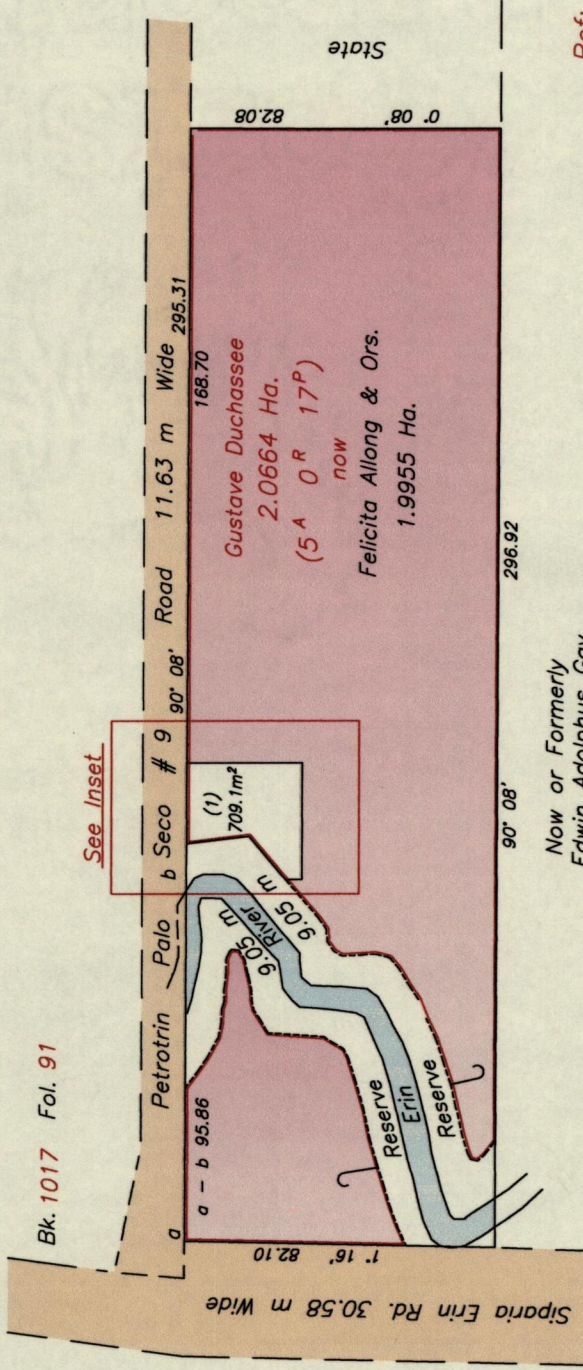


a - N 1116650  
 E 655010

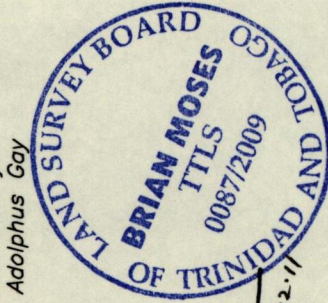
UTM Co-ordinates are approx.  
 Scaled from 1/10,000 sheet

This is a true copy of a diagram of 2.0664 Ha. originally granted to Gustave Duchassee showing a portion of land Coloured pink containing one point nine five five Hectares being the remainder after one previous transfer of other portions of the land. In accordance with Regulation 25 (1) of the Land Surveyors' Regulations 1998, I certify that this Plan is correct.

Remaining Portion



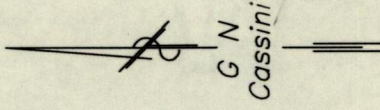
Now or Formerly  
 Edwin Adolphus Gay



Approved *[Signature]*  
 Director of Surveys 2009.12.11

SCALE 1:2000  
 Distances are in METRES

Ref. Bk. 442 Fol. 142



1333

*[Signature]* ..... T.T.L.S.  
 Checked by *[Signature]* 14/10/09  
 Entered on ..... 23rd Sept ..... 2009  
 Trinidad & Tobago Land Surveyor

20