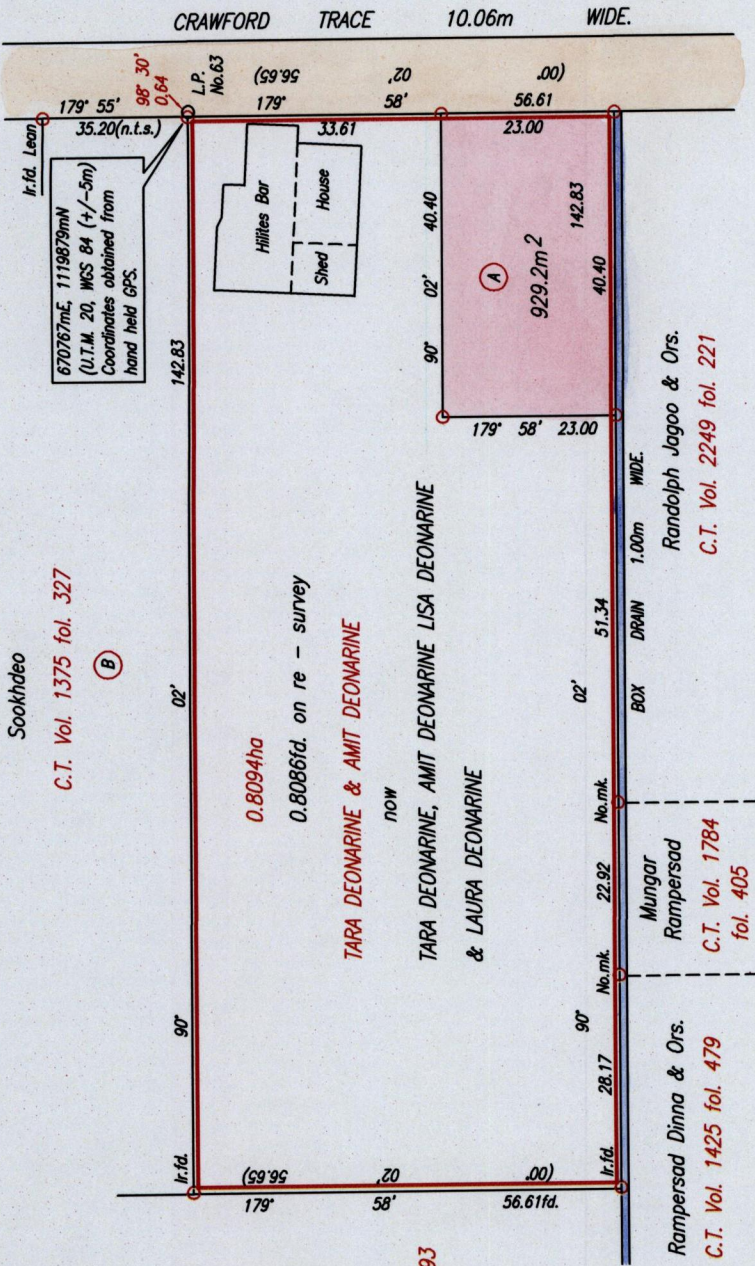


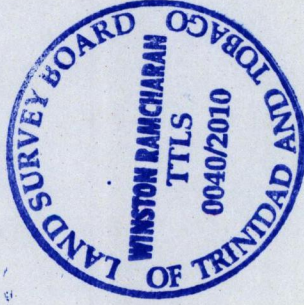
R.P.O. Vol. 119 Fol. 597  
 C.T. Vol. 5079 Fol. 163

Bk. 909 fol. 34

Cadastral Sheet G.18.F & G. 73C  
 1/d  
 Ward of Siparia  
 County of St. Patrick  
 Penal Rock Road  
 Parcel No.2



1333 1333 / 193 193



Cassini  
G  
W

Approved *[Signature]*  
 Director of Surveys 2010.4.13

○ Denotes Iron put except otherwise stated.  
 Bearings are Cassini Grid based on Solar Observations.

SCALE 1:1000  
 Distances are in Metres

PLAN of a Parcel of land coloured pink in the Ward of Siparia  
 Containing nine hundred and twenty nine point two square metres.  
 Surveyed by me, with due authority, in September, 2009  
 In accordance with Regulation 25(1) of the Land Surveyors' Regulations 1998,  
 I certify that this plan is correct.

Checked by *[Signature]*  
 Entered . . . . . Trinidad & Tobago Land Surveyor . 24<sup>th</sup> . . . . . 2010