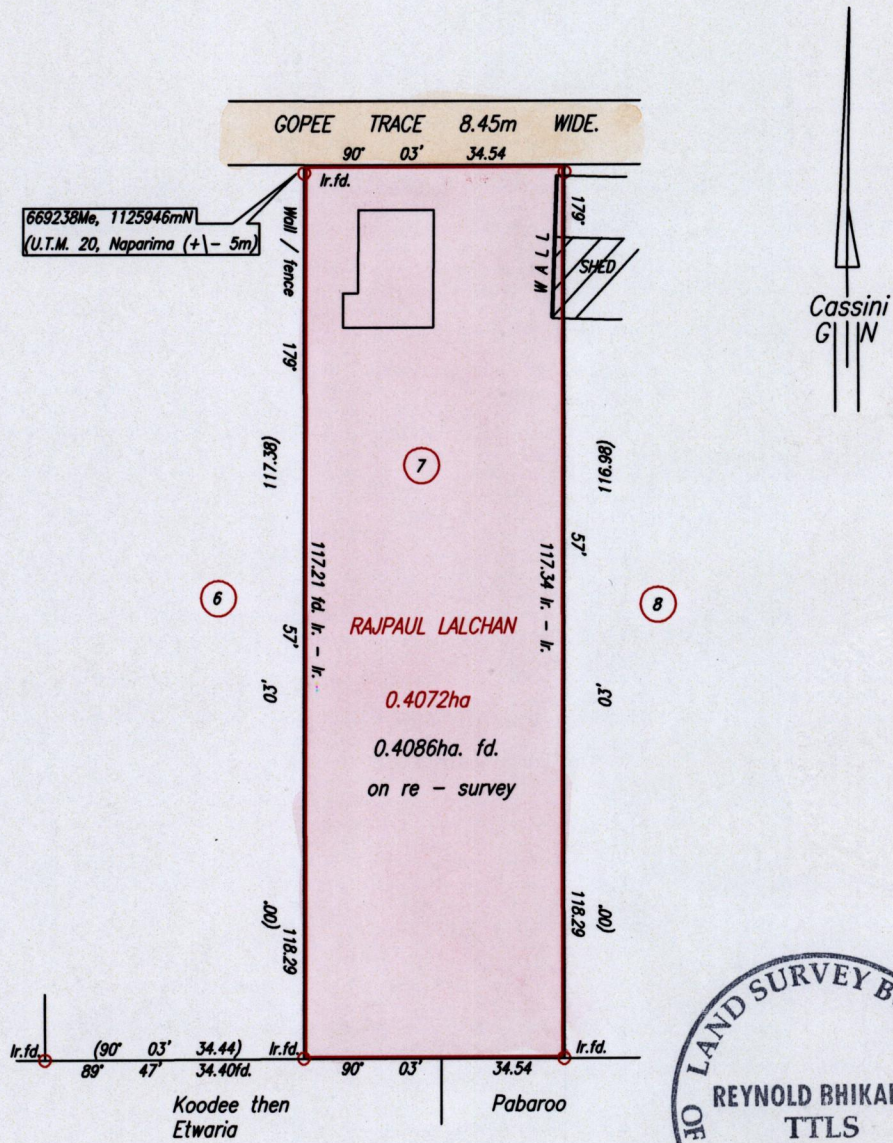


R.P.O. Vol. 62 Fol. 241
C.T. Vol. 2938 Fol. 22F
Vide Bk. 918 fol. 151

Cadastral Sheet G.13.F. 63F
1/c
Ward of Siparia
County of St.Patrick.
Penal



Approved *[Signature]*
by Director of Surveys 2009.12.11

SCALE 1:1000

Distances are in metres

Coordinates obtained from hand held GPS.
○ Denotes Iron put except otherwise stated
Bearings are Cassini Grid based on Solar Observations
PLAN of a Parcel of land coloured pink in the Ward of Siparia
Containing zero point four zero eight six hectare.
Redefined by me, with due authority, in November, 2008
In accordance with Regulation 25 (1) of the Land Surveyors' Regulations 1998,
I certify that this plan is correct.

Checked by *[Signature]* 21.10.09

[Signature]

Entered on Trinidad & Tobago Land Surveyor. 27th November. 2008.