

1333

1333/189

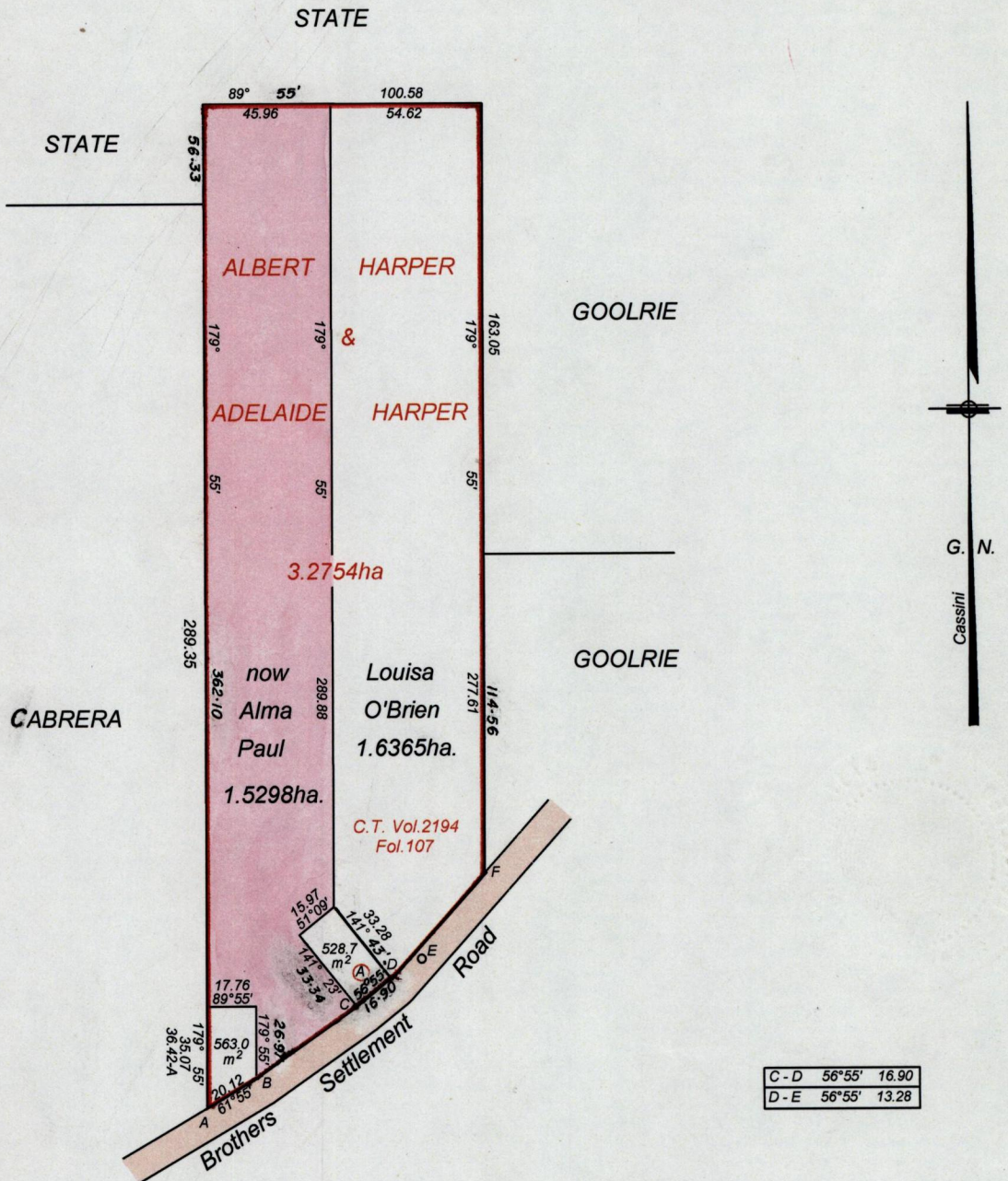
1333

REMAINING PORTION

R.P.O. Vol. 40 Fol. 312
C.T. Vol.1131 Fol. 497

Ward of Savana Grande
County of Victoria 54C
Cadastral Sheet D.24.L.&P. 3/b

Bk.1135 Fol.447
Bk.1238 Fol.89
Bk.991 Fol.82
Bk.324 Fol.183



C - D	56°55'	16.90
D - E	56°55'	13.28

528.7m² Lawrence Paul C.T.Vol. 3010 Fol.461
 563.0m² Anmarie Paul Roberts C.T.3919 Fol.85

Approved by [Signature]
 Director of Surveys 2010.4.12

Bearings are Cassini Grid based on Solar Observations

SCALE 1 / 2500
Distances are in metres

This is a true copy of a diagram of three point two seven five four hectares originally transferred to Albert Harper and Adelaide Harper showing a portion coloured pink and containing one point five two nine eight hectares being a remainder after three transfers
 In accordance with Rule 25 (1) of the Land Surveyors Regulation 1998
 I certify that this plan is correct



[Signature]

Checked by [Signature] 7/4/10

Trinidad & Tobago Land Surveyor 10-9-2008