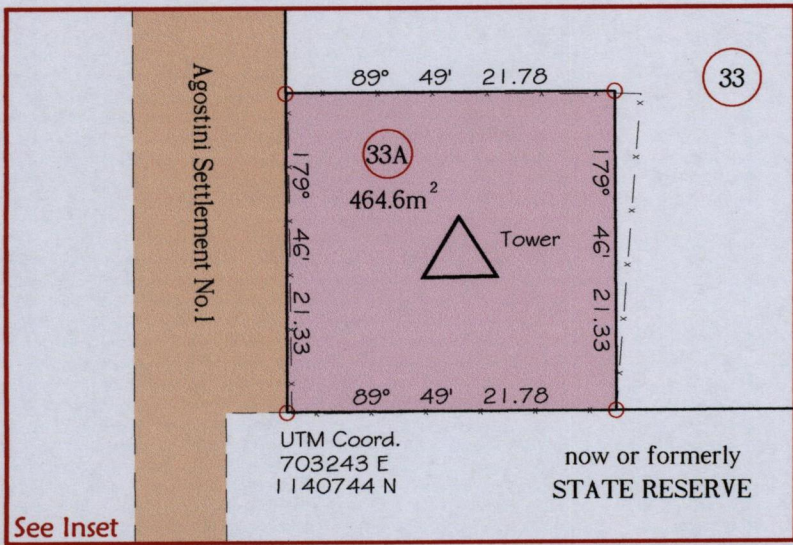


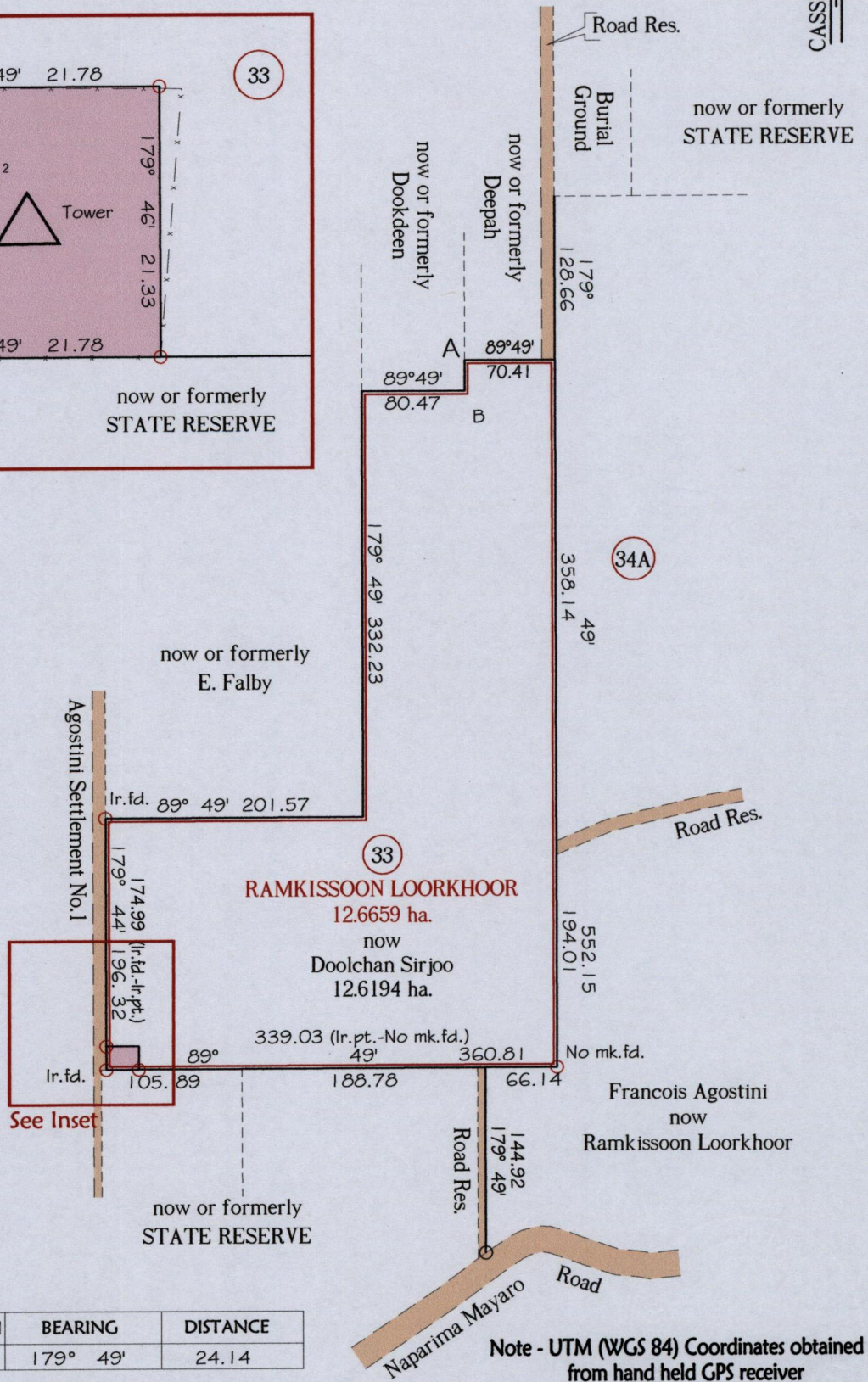
R.P.O. Vol. 125 Fol. 141
C.T. Vol. 3274 Fol. 27
T639 - Rio Claro East
C.T Vol 5501 Fol 441

Ward of Cocal
County of Nariva
Cadastral Sheet (E.22.M&N), 55C
3/a



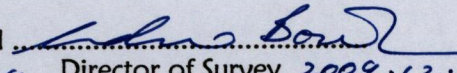
See Inset

SCALE 1:500



STATION	BEARING	DISTANCE
A-B	179° 49'	24.14

Note - UTM (WGS 84) Coordinates obtained from hand held GPS receiver + 5.00m

Approved 
Director of Survey 2009.12.11

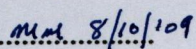
Bk. 1003 Fol. 9
Rem. Portion Plan Vol. 2112 Fol. 277
SCALE 1:7500

○ Denotes Iron put except stated otherwise.

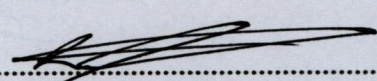
Note: Bearings are Cassini grid based on solar observations
Plan of a Parcel of land coloured pink in the Ward of Cocal.
Containing four hundred and sixty four point six square metres.
Surveyed by me, with due authority, in February 2008 for Digicel.

Distances are in metres.

In accordance with Regulation 25(1) of the Land Surveyors' Regulations 1998,
I certify that this plan is correct.

Checked by  8/10/09

Entered on


Trinidad & Tobago Land Surveyor 29.09.2009

