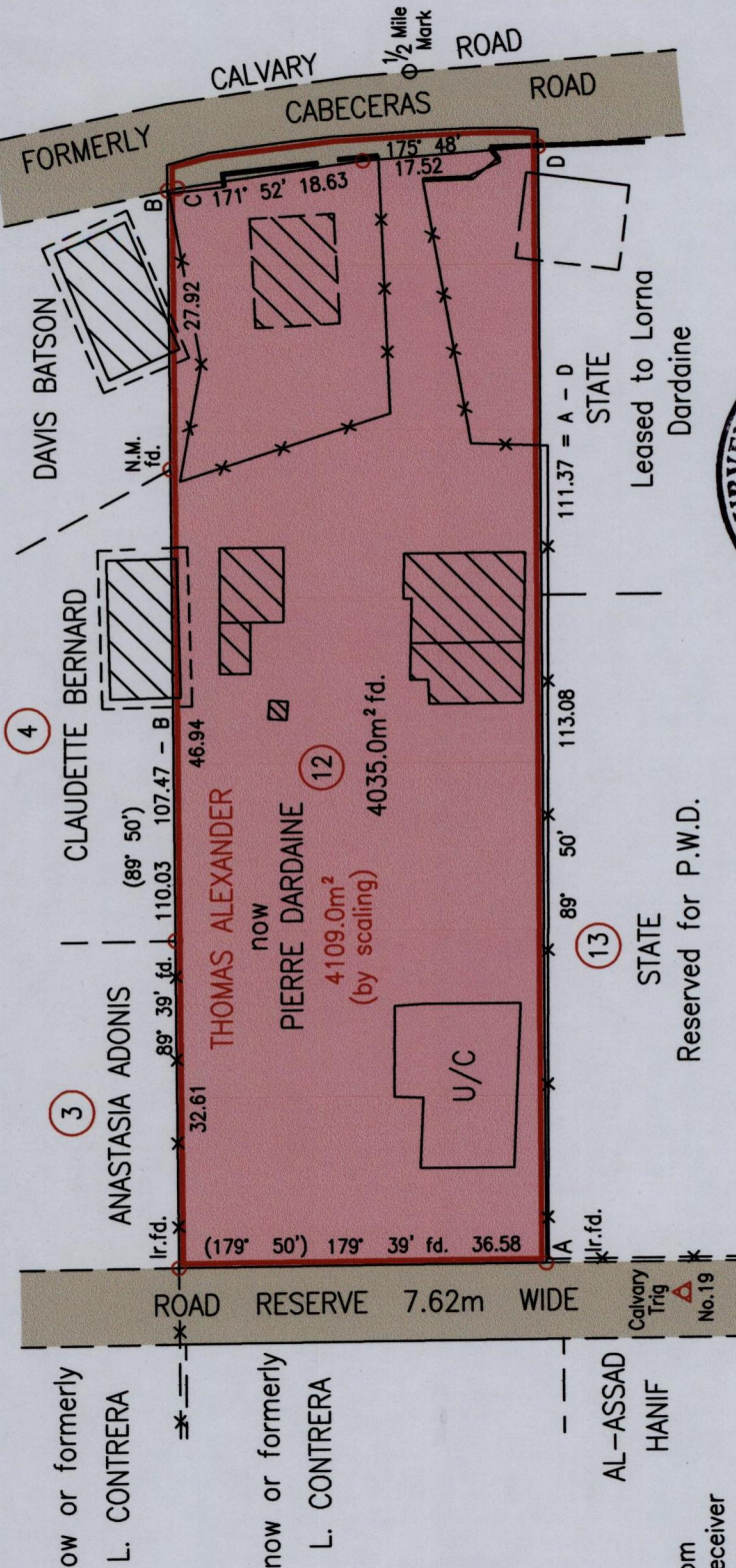


No.11 CALVARY HILL, ARIMA



Vide
Plan K.G.12
Bk 5:160
Bk 5:147
Bk 720:2
Bk 1002:169
Bk 1148:135
Bk 911:182
Bk 1227:176
Bk 112:190

E	687252
A	N 1177555

Reliability Error ± 2.0 m.
 Coordinates are UTM, Naparima 1955 from
 Garmin GPSmap 60CSx Handheld GPS Receiver

Bearings are Cassini Grid based on Solar Obs.

○ Denotes Iron Put unless otherwise stated

Plan of a Parcel of land coloured pink in the Borough of Arima
 Containing four thousand and thirty five point zero square metres
 Surveyed by me, with due authority, in February 2010

In accordance with Regulation 25(1) of the Land Surveyors' Regulations 1998,
 I certify that this plan is correct.

Checked by *Made* 24/3/10

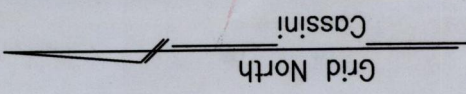
Entered on

Approved
[Signature]
 Director of Surveys
 2010.3.25



SCALE 1:750
 Distances are in Metres
 — Denotes Concrete Brick Wall.
 — Denotes chain link wire fence

LINE	BEARING	DIST.
B - C	168° 14'	1.02
TRIG - A	12° 32'	14.10
B - Mile Mark	154° 10'	26.83



1333

1333/162

162

Trinidad & Tobago Land Surveyor *22 February* 2010