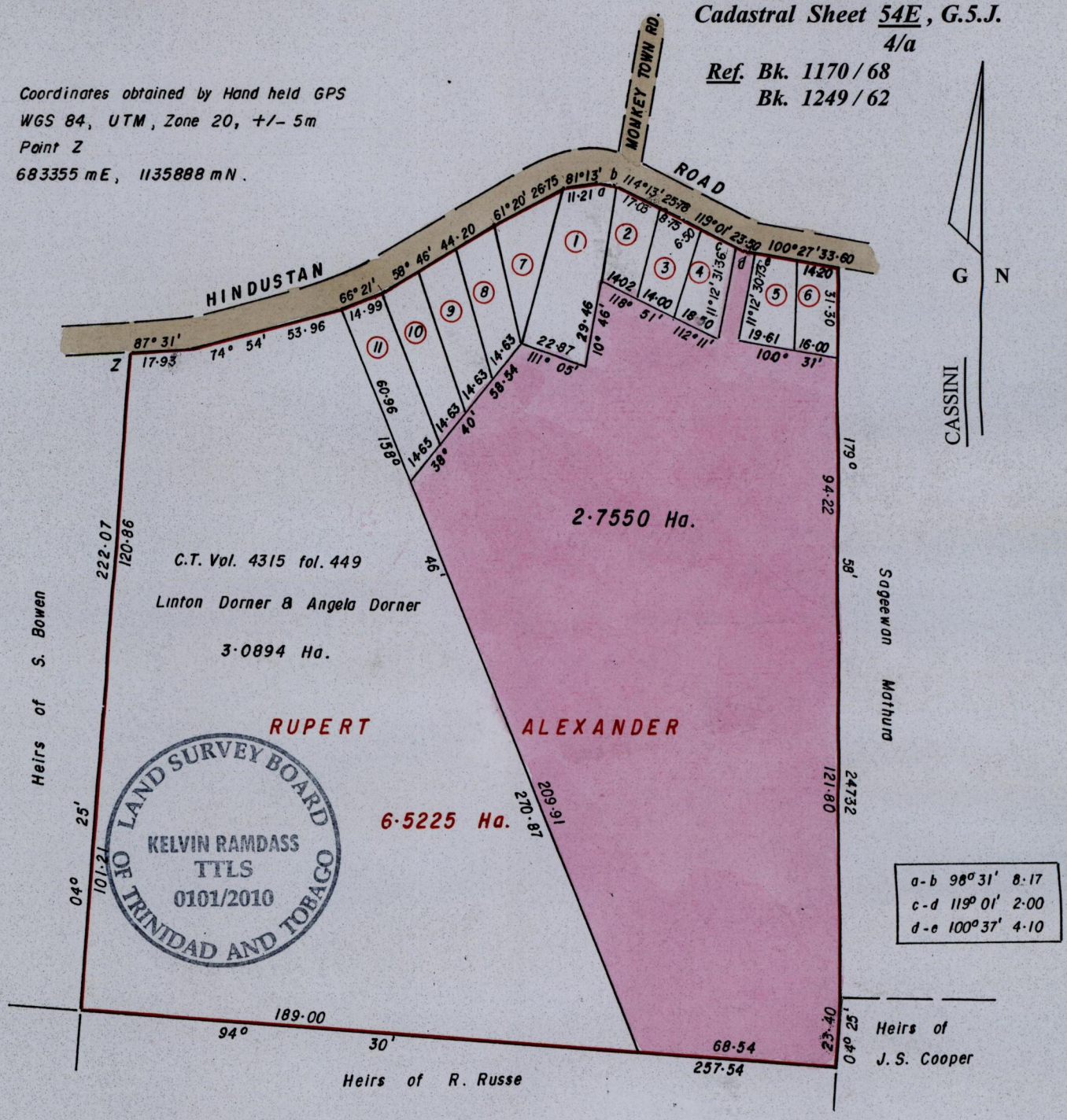


R.P.O. Vol. Fol.
C.T. Vol. 3983 Fol. 377

Ward of Ortoire
County of Victoria
Cadastral Sheet 54E, G.5.J.
4/a

Coordinates obtained by Hand held GPS
WGS 84, UTM, Zone 20, +/- 5m
Point Z
683355 mE, 1135888 mN.

Ref. Bk. 1170 / 68
Bk. 1249 / 62



a-b 98° 31' 8.17
c-d 119° 01' 2.00
d-e 100° 37' 4.10

Lot	Name	Area
1. C.T.Vol. 4128 fol. 199	Courtney Sorillo	1198.1 m ²
2. C.T.Vol. 4675 fol. 137	Anthony Phillip & F. Atwell	481.8 m ²
3. C.T.Vol. 4084 fol. 507	Kurt Dorner & M. Maloney	468.4 m ²
4. C.T.Vol. 4116 fol. 151	Isa Dottin & J. Evelyn	525.2 m ²
5. C.T.Vol. 4182 fol. 219	Terrance Atwell	536.6 m ²
6. C.T.Vol. 4182 fol. 217	Terrance Atwell	464.5 m ²

7. C.T.Vol. 4914 fol. 377	Neil Dorner & Ors.	466.5 m ²
8. C.T.Vol. 4914 fol. 385	Janet Dorner & R. Cagan	546.5 m ²
9. C.T.Vol. 5032 fol. 07	Wendy Dalrymple - Graham	619.4 m ²
10. C.T.Vol. 4935 fol. 361	Leslie Ann Dorner - Byron & Cadine Dick	692.8 m ²
11. C.T.Vol. 4935 fol. 369	Joy Dorner	781.5 m ²

Approved
Director of Surveys 2010.3.23

SCALE 1/2000
Distances are in METRES

Note: To Obtain compass bearings add/subtract minutes
This is a true copy of a diagram of six point five two two five hectares originally transferred to Rupert Alexander, showing a portion coloured pink and containing two point seven five five zero hectares being the remainder after twelve previous transfers of other portions of the land.
In accordance with Regulation 25[1] of the Land Surveyors' Regulations 1998, I certify that this plan is correct.

Checked by
Entered

Trinidad and Tobago Land Surveyor..... 01/11..... 2010