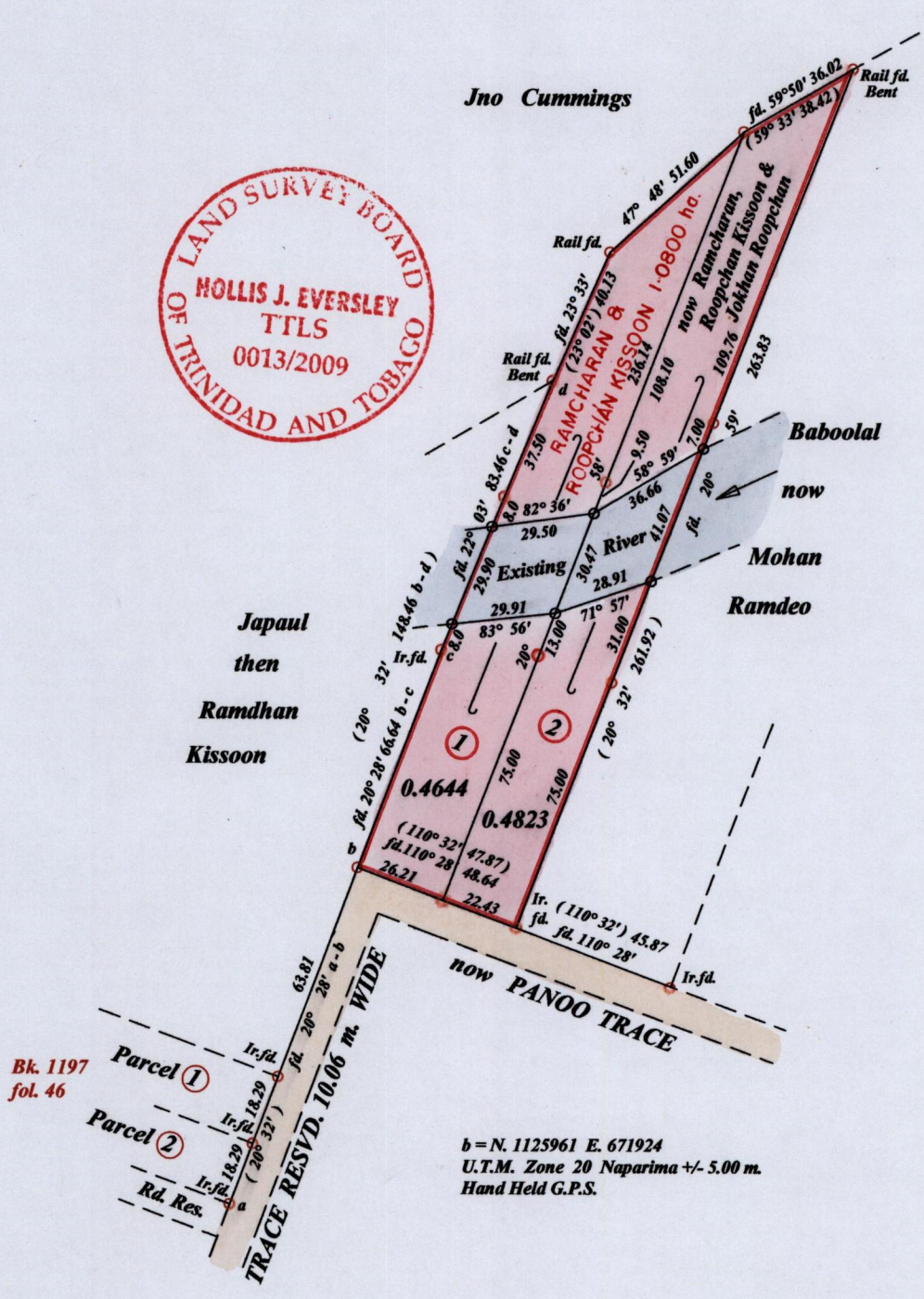
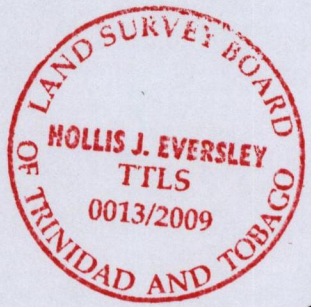


R.P.O. Vol. 91 fol. 287
C.T. Vol. 4195 fol. 307

Ward of Naparima
County of Victoria
Cadastral Sheet (G.13. G.) $\frac{63 F}{2/c}$



b = N. 1125961 E. 671924
U.T.M. Zone 20 Naparima +/- 5.00 m.
Hand Held G.P.S.

Bk. 834 fol. 135

Approved *[Signature]*
Director of Surveys 2010.3.22

○ Denotes Iron Put Except
Otherwise Stated

SCALE : 1: 2000

Note: Bearings are cassini grid based on solar observations Distances are in metres

PLAN of 2 Parcels of land coloured pink in the Ward of Naparima
Containing together zero point nine four six seven hectares
Surveyed by me, with due authority, in April 2009
In accordance with Regulation 25 (1) of the Land Surveyors' Regulations 1998,
I certify that this plan is correct.

Checked by *[Signature]* 1/3/10

[Signature]
3rd Dept. 2009

Entered on Trinidad & Tobago Land Surveyor 2009